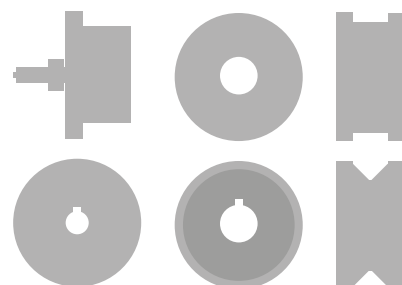


Single or double flanged rail wheels • Machined nylon wheels • V groove wheels  
Machined axles • Bespoke castors

# SPECIALIST WHEEL SYSTEMS



+44 (0)1249 822 222  
wheelsystems@bilgroup.co.uk





# One of The UK's Leading Specialist Wheel Manufacturers

BIL Castors & Wheels is part of a larger group of companies known as BIL Group Limited and it can trace its origins back to 1972.

Using our extensive market knowledge, BIL castors & wheels have know-how and expertise to produce bespoke wheel system solutions for every industry including the water treatment sector, mining industry, trommel manufacturers, bridge manufacturers and heavy duty industry.

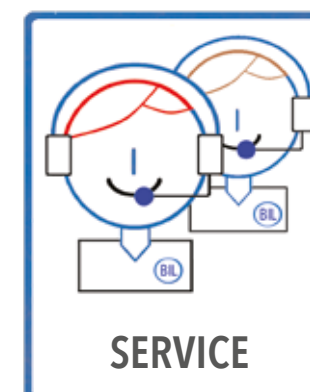
Based in Wiltshire, our in-house manufacturing capability utilises high end equipment, skilled labour and in-house design.



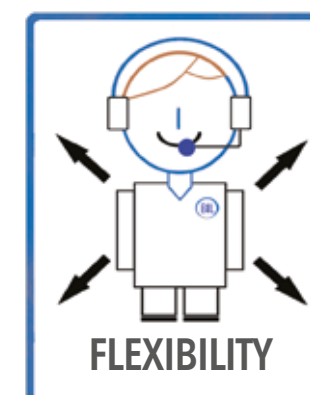
Your quality expectations mean everything to us. Only by striving to exceed these expectations can we hope to retain your custom and therefore allow us to grow. Our ISO 9001:2015 Quality Management system forms the backbone of our organisation.



Focus on innovation flows through our organisation and is the key to our success. As well as improving existing products and designing new solutions for our clients, it also helps us to drive forward our service and to make our system processes more efficient.



Providing excellent customer service that meets customer expectations is a core business driver at BIL. Our customer service centre utilises the latest software to effectively monitor the levels of service. We offer a local service on a national scale via our team of highly experienced area sales managers. Our products are engineered to provide many years of service.



To accommodate the needs of our clients, we accept that we must be flexible in our approach and in everything that we do. In response to shifting demands, we must be able to react quickly and provide the most effective response. Whilst showing a willingness to change should a customer require a bespoke solution.

## Machined Nylon Wheels & guide rollers Page 6 to 7



### High-quality machined Nylon wheels manufactured from cast nylon (PA6)

- Very high load capacity
- Wear-resistant and non-marking
- Hygienic
- Super low starting and rolling resistance
- Ball Bearing, Plain Bore or Key-way options
- Bespoke solutions

## Machined Steel Wheels Page 8



### Precision machined steel wheel produced from C45 grade steel billets.

- Very high load capacity
- Wear-resistant and shock-resistant
- Excellent lateral peak load resistance
- Super low starting and rolling resistance
- Ball Bearing, Plain Bore or Key-way options
- Bespoke solutions

## Flanged, V Grooved wheels and rail sections Page 10 to 13



### Options include either cast Iron, machined steel or machined nylon.

- Single, Double flanged & V Groove options
- Very high load capacity
- Wear-resistant and shock-resistant
- Flat or taper tread
- Super low starting and rolling resistance
- Ball Bearing, Plain Bore or Key-way options

## Axles & Machined Components Page 14



### Bespoke manufactured axles and components designed

- No more issues with incorrectly sized components
- Manufactured to order
- Available in C45 steel or stainless steel
- Complete wheel systems.





## POM (Polyacetal) guide rollers

25 to 80 mm 20 to 220 kg

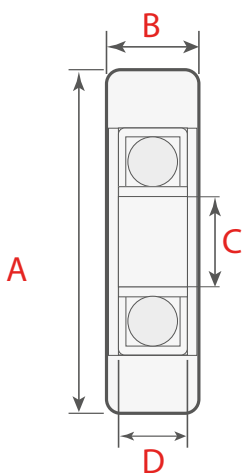
### Technical Specification

80 Shore D with ball bearings  
(ZZ or 2RS).  
Temperature range -40°C to +80°C

### Characteristics

Wear-resistant, non-marking, hygienic,  
low rolling resistance, chemical resistant to  
oils, greases, fuels and many chemicals

A Diameter (mm)	B Tread Width (mm)	C Bore Size (mm)	D Hub Width (mm)	Load Capacity (kg)	Product Code
25	13	6	6	20	PR25136
30	14	8	7	30	PR30148
30	14	9	7	22	PR30149
32	16	8	7	44	PR32168
35	14	8	7	40	PR35148
40	16	10	9	70	PR401610
40	16	12	8	70	PR401612
40	20	10	9	90	PR402010
44	16	12	8	80	PR441612
50	15	8	7	80	PR50158
50	15	10	9	100	PR501510
50	18	12	10	100	PR501812
50	18	15	11	110	PR501815
50	18	17	10	110	PR501817
50	25	12	10	125	PR502512
60	20	17	12	150	PR602017
60	25	15	11	150	PR602515
65	25	20	14	150	PR652520
70	25	20	14	200	PR702520
75	22	17	14	160	PR752217
75	22	20	14	160	PR752220
80	22	17	14	175	PR802217
80	25	25	15	220	PR802525



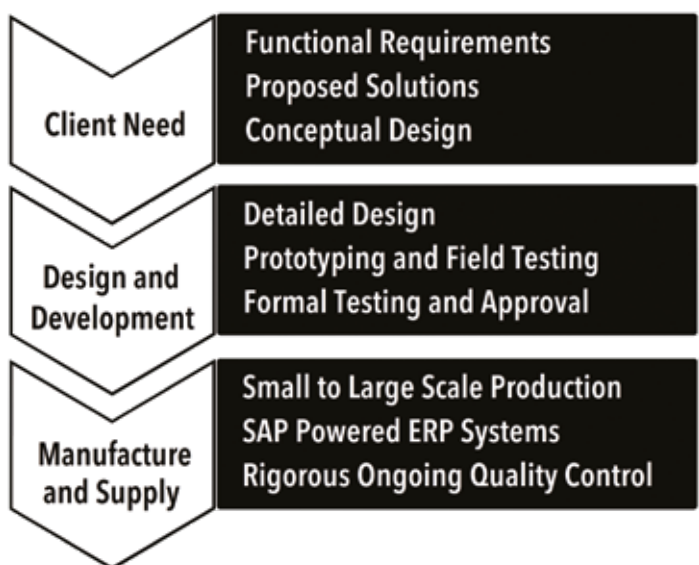
## Bespoke POM (Polyacetal) and NYLON (PA6) wheels made to order

### Designed to your specification

We have the capability to manufacture to your specific requirements.....

.....tailor-made bespoke solutions

Full CAD capabilities



## COMPLETE WHEEL SYSTEMS

+44 (0)1249 822 222  
wheelsystems@bilgroup.co.uk

## NYLON (PA6) machined wheels

65 to 400 mm 800 to 12,000 kg

### Technical Specification

High Quality Cast and Machined Nylon  
Temperature range -30°C to +80°C

### Characteristics

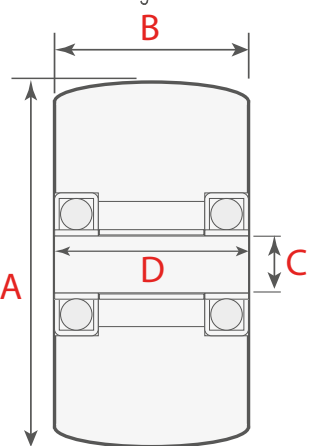
Very high load capacity, wear-resistant,  
non-marking, hygienic, Super low rolling  
resistance

A Diameter (mm)	B Tread Width (mm)	C Bore Size (mm)	D Hub Width (mm)	Load Capacity (kg)	Product Code
65	45	15	45	800	BZXH65WNYBJM15HD
80	45	20	48	1,000	BZH80WNYBJM20HD
100	45	20	48	1,250	BZH100WNYBJM20HD
100	45	25	48	1,250	BZH100WNYBJM25HD
125	45	20	48	1,400	BZH125WNYBJM20HD
125	45	25	48	1,400	BZH125WNYBJM25HD
125	55	20	60	2,000	BZXH125WNYBJM20HD
125	55	25	60	2,000	BZXH125WNYBJM25HD
150	50	25	60	1,500	BZXH150WNYBJM25HD
150	55	30	60	2,500	BZXH150WNYBJM30HD
150	80	35	85	3,000	BZXH150WNYBJM35HD
200	50	20	60	1,500	BZXH200WNYBJM20HD
200	50	25	60	1,500	BZXH200WNYBJM25HD
200	55	35	60	3,000	BZXH200WNYBJM35HD
200	55	40	60	3,000	BZXH200WNYBJM40HD
200	80	50	85	4,500	BZXH200WNYBJM50HD
300	80	55	85	7,000	BZXH300WNYBJM55HD
300	110	70	120	10,000	BZXH300WNYBJM70HD
400	110	80	120	12,000	BZXH400WNYBJM80HD

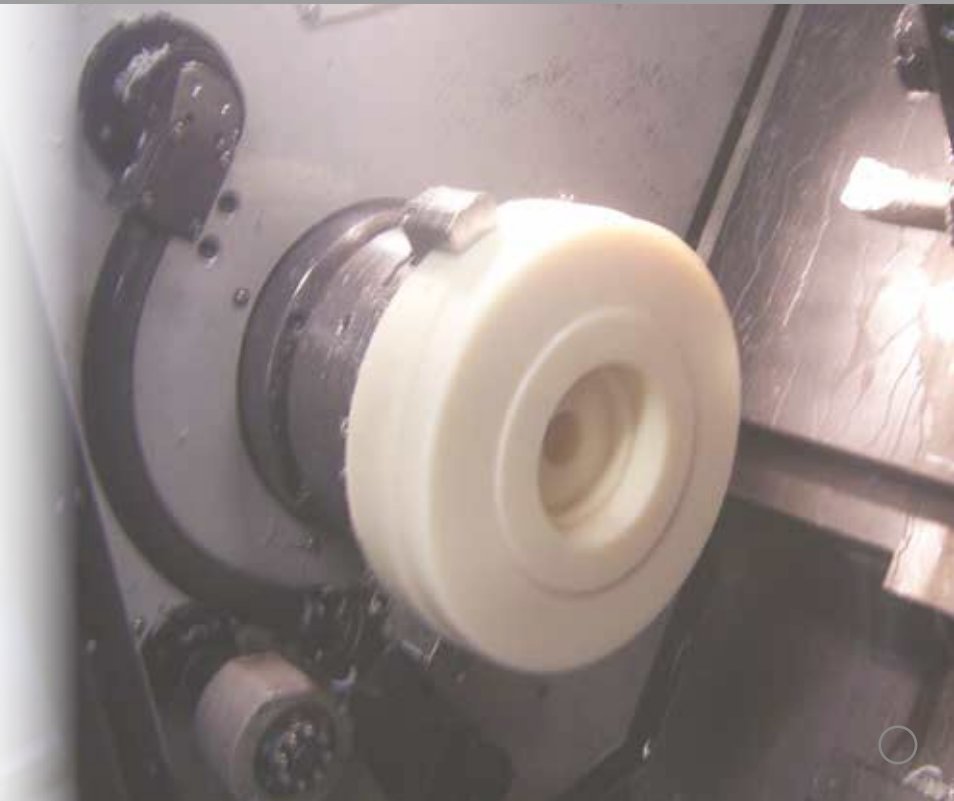


### Crowned Tread

Less friction  
less rolling resistance



Flat tread available  
on request.



# STEEL (C45) machined wheels

65 to 300 mm 750 to 15,400 kg

## Technical Specification

High Quality C45 Machined Steel  
Temperature range -30°C to +120°C

## Characteristics

Very high load capacity, wear-resistant,  
shock-resistant, excellent resistance to lateral  
peak loads, super low rolling resistance

A Diameter (mm)	B Tread Width (mm)	C Bore Size (mm)	D Hub Width (mm)	Load Capacity (kg)	Bore	Tread Type	Product Code
65	40	20	45	750	Ball Bearing	Crowned	BZH65WMSTBJM20
80	40	20	45	1,100	Ball Bearing	Crowned	BZH80WMSTBJM20
100	40	25	45	1,700	Ball Bearing	Crowned	BZH100WMSTBJM25
100	55	25	60	2,500	Ball Bearing	Crowned	BZXH100WMSTBJM25
125	55	30	60	2,750	Ball Bearing	Crowned	BZH125WMSTBJM30
150	50	25	50	1,200	Ball Bearing	Crowned	BZH150WMSTBJM25
150	55	35	60	3,600	Ball Bearing	Crowned	BZH150WMSTBJM35
200	55	35	60	3,600	Ball Bearing	Crowned	BZXH200WMSTBJM35
200	55	50	60	6,000	Ball Bearing	Crowned	BZXH200WMSTBJM50
200	80	50	90	7,000	Ball Bearing	Crowned	BZXXH200WMSTBJM50
250	55	35	60	3,600	Ball Bearing	Crowned	BZXH250WMSTBJM35
250	55	50	60	6,000	Ball Bearing	Crowned	BZXH250WMSTBJM50
250	80	50	90	7,000	Ball Bearing	Crowned	BZXXH250WMSTBJM50
300	55	50	60	6,000	Ball Bearing	Crowned	BZXH300WMSTBJM50
300	80	55	90	7,500	Ball Bearing	Crowned	BZXXH300WMSTBJM55

A Diameter (mm)	B Tread Width (mm)	C Bore Size (mm)	D Hub Width (mm)	Load Capacity (kg)	Bore	Tread Type	Product Code
75	60	25	60	1,140	Ball Bearing	Flat	75RWMSFTBJM25
75	60	30	60	2,040	Ball Bearing	Flat	75RWMSFTBJM30
100	60	25	60	1,140	Ball Bearing	Flat	100RWMSFTBJM25
100	60	30	60	2,040	Ball Bearing	Flat	100RWMSFTBJM30
150	80	30	80	2,040	Ball Bearing	Flat	150RWMSFTBJM30
150	80	35	80	2,800	Ball Bearing	Flat	150RWMSFTBJM35
150	80	40	80	3,384	Ball Bearing	Flat	150RWMSFTBJM40
200	90	40	90	3,384	Ball Bearing	Flat	200RWMSFTBJM40
200	90	50	90	7,340	Ball Bearing	Flat	200RWMSFTBJM50
250	100	50	100	7,340	Ball Bearing	Flat	250RWMSFTBJM50
250	100	60	100	9,000	Ball Bearing	Flat	250RWMSFTBJM60
250	100	75	100	9,785	Ball Bearing	Flat	250RWMSFTBJM75
300	100	50	100	7,340	Ball Bearing	Flat	300RWMSFTBJM50
300	100	60	100	9,000	Ball Bearing	Flat	300RWMSFTBJM60
300	100	75	100	9,785	Ball Bearing	Flat	300RWMSFTBJM75

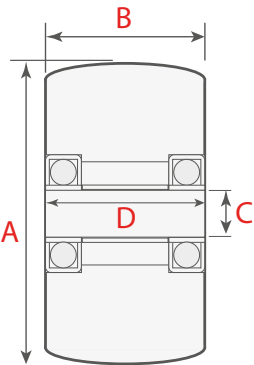
A Diameter (mm)	B Tread Width (mm)	C Bore Size (mm)	D Hub Width (mm)	Load Capacity (kg)	Bore	Tread Type	Product Code
75	60	25	60	2,300	Keywayed	Flat	75RWMSFTBKM25
75	60	30	60	2,300	Keywayed	Flat	75RWMSFTBKM30
100	60	25	60	3,100	Keywayed	Flat	100RWMSFTBKM25
100	60	30	60	3,100	Keywayed	Flat	100RWMSFTBKM30
150	80	30	80	6,200	Keywayed	Flat	150RWMSFTBKM30
150	80	35	80	6,200	Keywayed	Flat	150RWMSFTBKM35
150	80	40	80	6,200	Keywayed	Flat	150RWMSFTBKM40
200	90	40	90	9,300	Keywayed	Flat	200RWMSFTBKM40
200	90	50	90	9,300	Keywayed	Flat	200RWMSFTBKM50
250	100	50	100	12,900	Keywayed	Flat	250RWMSFTBKM50
250	100	60	100	12,900	Keywayed	Flat	250RWMSFTBKM60
250	100	75	100	12,900	Keywayed	Flat	250RWMSFTBKM75
300	100	50	100	15,400	Keywayed	Flat	300RWMSFTBKM50
300	100	60	100	15,400	Keywayed	Flat	300RWMSFTBKM60
300	100	75	100	15,400	Keywayed	Flat	300RWMSFTBKM75

Cannot find what you are looking for?

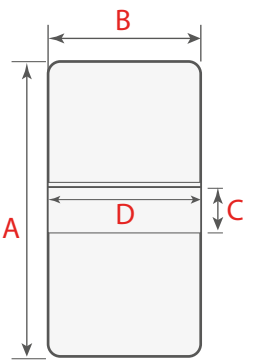
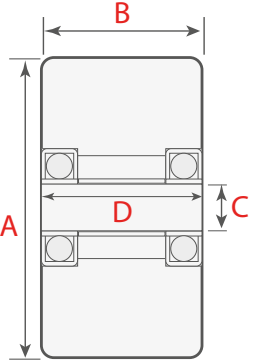
.....Please contact us today as there are many other sizes and  
specifications available off the shelf, and made to order!



**Crowned Tread**  
Less friction  
less rolling resistance



**Flat Tread**  
Larger surface area  
for use with rail section



Example  
Keywayed  
Wheel



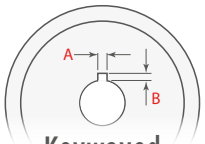
## COMPLETE WHEEL SYSTEMS

+44 (0)1249 822 222  
wheelsystems@bilgroup.co.uk

# Specialist wheels and axles.....the complete wheel system

Machined to your exacting requirements.....the complete solution without the risk of non-compatible parts

Steel, Stainless Steel, Aluminium or brass....the possibilities are endless!  
Precision manufacturing to ensure both wheel and axle fit perfectly...the one stop shop!



**Keywayed**  
Refer to the chart below

Wheel Bore Size (mm)	A Keyway Width (mm)	B Keyway Height (mm)
12	4	1.8
20	6	2.8
25	8	3.3
30	8	3.3
35	10	3.3
40	12	3.3
50	14	3.8
60	18	4.4
75	20	4.9



## Single Flanged NYLON (PA6) machined wheels

50 to 250 mm 220 to 3,000 kg

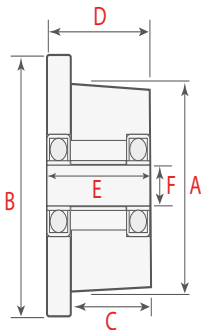
### Technical Specification

High Quality Cast and Machined Nylon  
Temperature range -30°C to +80°C

### Characteristics

Wear-resistant, non-marking, hygienic,  
low rolling resistance, chemical resistant to  
oils, greases, fuels and many chemicals

A Tread Diameter (mm)	B OD of Flange (mm)	C Flange Width (mm)	D Total Tread Width (mm)	E Hub Width (mm)	F Bore Size (mm)	Load Capacity (kg)	Product Code
50	62	26	32	32	15	220	BZH50WNYSFBJM15
75	100	30	40	47	20	380	BZH75WNYSFBJM20
100	125	36	46	52	20	600	BZH100WNYSFBJM20
125	145	36	46	52	20	750	BZH125WNYSFBJM20
150	175	36	46	52	20	900	BZH150WNYSFBJM20
180	210	36	48	52	20	1,000	BZH180WNYSFBJM20
200	230	38	53	60	25	1,300	BZH200WNYSFBJM25
200	230	65	80	90	40	2,500	BZH200WNYSFBJM40
250	300	50	65	70	30	2,100	BZH250WNYSFBJM30
250	300	60	80	90	40	3,000	BZH250WNYSFBJM40



**Taper Tread**  
3° taper tread  
Also available with flat parallel tread and taper  
flange; add suffix 'FT' to part number

## Single Flanged 'I' beam STEEL (C45) machined wheels

55 to 200 mm 160 to 2,000 kg

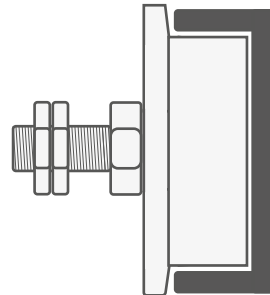
### Technical Specification

High Quality C45 Machined Steel  
Temperature range -30°C to +120°C

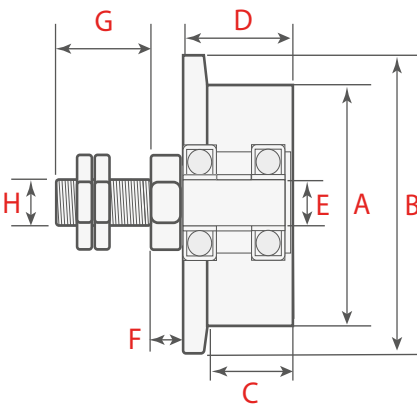
### Characteristics

Very high load capacity, wear-resistant,  
shock-resistant, excellent resistance to lateral  
peak loads, super low rolling resistance

**Parallel Tread**  
Flat parallel tread  
suitable for use  
with PFC channels



**PFC Channel**  
Parallel flange  
channel



## Double Flanged NYLON (PA6) machined wheels

200 to 400 mm 1,140 to 4,729 kg

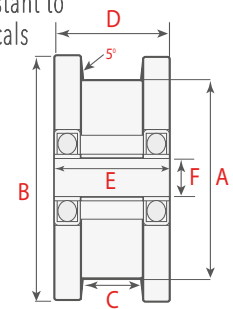
### Technical Specification

High Quality Cast and Machined Nylon  
Temperature range -30°C to +80°C

### Characteristics

Wear-resistant, non-marking, hygienic,  
low rolling resistance, chemical resistant to  
oils, greases, fuels and many chemicals

A Tread Diameter (mm)	B OD of Flange (mm)	C Flange Width (mm)	D Total Tread Width (mm)	E Hub Width (mm)	F Bore Size (mm)	Load Capacity (kg)	Product Code
200	240	60	100	100	25	1,140	200WNYDFBJM25
250	295	60	100	100	30	2,040	250WNYDFBJM30
300	345	60	100	100	40	3,384	300WNYDFBJM40
350	395	60	110	110	50	4,100	350WNYDFBJM50
400	450	60	110	110	50	4,729	400WNYDFBJM50



Plain bore versions are available on request

## V groove NYLON (PA6) machined wheels

50 to 200 mm 50 to 500 kg

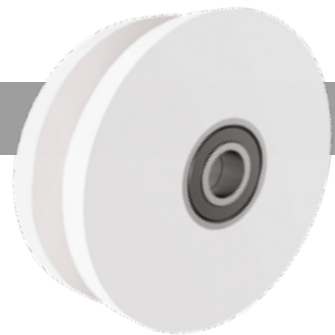
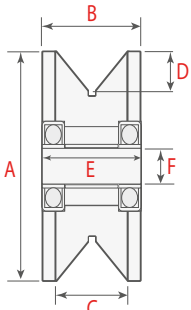
### Technical Specification

High Quality Cast and Machined Nylon  
Temperature range -30°C to +80°C

### Characteristics

Wear-resistant, non-marking, hygienic,  
low rolling resistance, chemical resistant to  
oils, greases, fuels and many chemicals

A Tread Diameter (mm)	B Total Tread Width (mm)	C Groove Width (mm)	D Groove Depth (mm)	E Hub Width (mm)	F Bore Size (mm)	Load Capacity (kg)	Product Code
50	18	12	7	18	10	50	BZH50WNYYVBJM10
75	22	16	8	22	12	75	BZH75WNYYVBJM12
100	24	18	9	24	15	150	BZH100WNYYVBJM15
100	40	20	9	40	15	400	BZXH100WNYYVBJM15
120	33	25	11	33	20	200	BZH120WNYYVBJM20
125	50	25	11	50	20	700	BZH125WNYYVBJM20
150	33	25	11	33	20	400	BZH150WNYYVBJM20
200	33	25	11	33	20	500	BZH200WNYYVBJM20



**Cannot find what you are  
looking for?**  
.....Please contact us today as there  
are many other sizes and  
specifications available off the shelf,  
and made to order!

## ...Looking for the complete wheel system....don't forget your axles

**Machined to your exacting requirements.....the complete solution without the risk of non-compatible parts**

Steel, Stainless Steel, Aluminium or brass  
....the possibilities are endless!  
Precision manufacturing to ensure both wheel  
and axle fit perfectly...the one stop shop!



## Single Flanged STEEL (C45) machined wheels

75 to 400 mm **KG** 900 to 14,400 kg

### Technical Specification

High Quality C45 Machined Steel  
Temperature range -30°C to +120°C

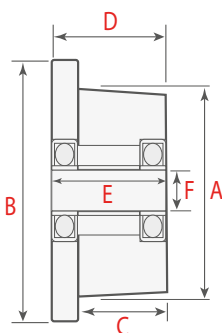
### Characteristics

Very high load capacity, wear-resistant, shock-resistant,  
excellent resistance to lateral peak loads, super low rolling  
resistance

A Tread Diameter (mm)	B OD of Flange (mm)	C Tread Width (mm)	D Total Width (mm)	E Hub Width (mm)	F Bore Size (mm)	Load Capacity (kg)	Bore	Product Code
75	100	25	37	37	20	900	Ball Bearing	75WMSFBJM20
75	100	25	37	37	25	975	Ball Bearing	75WMSFBJM25
100	125	25	37	37	20	900	Ball Bearing	100WMSFBJM20
100	125	25	37	37	25	1,140	Ball Bearing	100WMSFBJM25
150	180	40	55	55	25	1,140	Ball Bearing	150WMSFBJM25
150	180	40	55	55	30	2,040	Ball Bearing	150WMSFBJM30
200	240	55	70	70	30	2,040	Ball Bearing	200WMSFBJM30
200	240	55	70	70	35	2,800	Ball Bearing	200WMSFBJM35
200	240	55	70	70	40	3,380	Ball Bearing	200WMSFBJM40
250	290	55	70	70	35	2,800	Ball Bearing	250WMSFBJM35
250	290	55	70	70	40	3,380	Ball Bearing	250WMSFBJM40
250	290	55	70	70	50	7,100	Ball Bearing	250WMSFBJM50
300	345	60	80	80	40	4,400	Ball Bearing	300WMSFBJM40
300	345	60	80	80	50	7,340	Ball Bearing	300WMSFBJM50
350	395	60	80	80	50	7,340	Ball Bearing	350WMSFBJM50
350	395	60	80	80	60	9,000	Ball Bearing	350WMSFBJM60
350	395	60	80	80	75	9,785	Ball Bearing	350WMSFBJM75
400	450	70	100	100	60	9,000	Ball Bearing	400WMSFBJM60
400	450	70	100	100	75	9,785	Ball Bearing	400WMSFBJM75

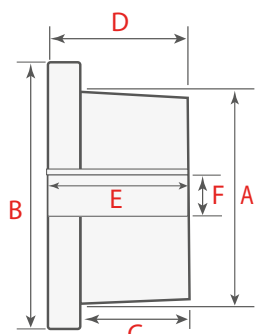
A Tread Diameter (mm)	B OD of Flange (mm)	C Tread Width (mm)	D Total Width (mm)	E Hub Width (mm)	F Bore Size (mm)	Load Capacity (kg)	Bore	Product Code
75	100	25	37	37	20	975	Keywayed	75WMSFKM20
75	100	25	37	37	25	975	Keywayed	75WMSFKM25
100	125	25	37	37	20	1,300	Keywayed	100WMSFKM20
100	125	25	37	37	25	1,300	Keywayed	100WMSFKM25
150	180	40	55	55	25	3,100	Keywayed	150WMSFKM25
150	180	40	55	55	30	3,100	Keywayed	150WMSFKM30
150	180	40	55	55	35	3,100	Keywayed	150WMSFKM35
200	240	55	70	70	30	5,700	Keywayed	200WMSFKM30
200	240	55	70	70	35	5,700	Keywayed	200WMSFKM35
200	240	55	70	70	40	5,700	Keywayed	200WMSFKM40
250	290	55	70	70	35	7,100	Keywayed	250WMSFKM35
250	290	55	70	70	40	7,100	Keywayed	250WMSFKM40
250	290	55	70	70	50	7,100	Keywayed	250WMSFKM50
300	345	60	80	80	40	9,300	Keywayed	300WMSFKM40
300	345	60	80	80	50	9,300	Keywayed	300WMSFKM50
350	395	60	80	80	50	10,800	Keywayed	350WMSFKM50
350	395	60	80	80	60	10,800	Keywayed	350WMSFKM60
350	395	60	80	80	75	10,800	Keywayed	350WMSFKM75
400	450	70	100	100	50	14,400	Keywayed	400WMSFKM50
400	450	70	100	100	60	14,400	Keywayed	400WMSFKM60
400	450	70	100	100	75	14,400	Keywayed	400WMSFKM75

Ball Bearing



3°  
Taper Tread  
3° taper tread as  
standard.  
Flat parallel treads are  
available on request

Keywayed



Keywayed  
Refer to the chart below

Wheel Bore Size (mm)	A Keyway Width (mm)	B Keyway Height (mm)
20	6	2.8
25	8	3.3
30	8	3.3
35	10	3.3
40	12	3.3
50	14	3.8
60	18	4.4
75	20	4.9

## Double Flanged STEEL (C45) machined wheels

75 to 350 mm **KG** 1,140 to 10,800 kg

### Technical Specification

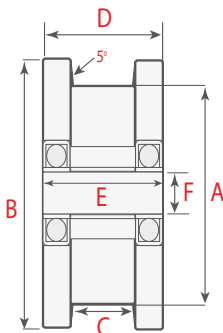
High Quality C45 Machined Steel  
Temperature range -30°C to +120°C

### Characteristics

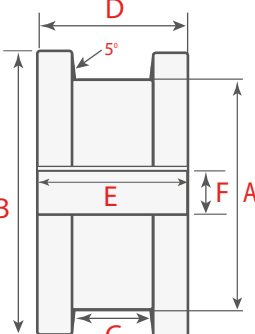
Very high load capacity, wear-resistant,  
shock-resistant, excellent resistance to lateral peak  
loads, super low rolling resistance

A Tread Diameter (mm)	B OD of Flange (mm)	C Tread Width (mm)	D Total Width (mm)	E Hub Width (mm)	F Bore Size (mm)	Load Capacity (kg)	Bore	Product Code
75	100	35	60	60	25	1,140	Ball Bearing	75WSTDfBJ25
75	100	35	60	60	30	1,350	Ball Bearing	75WSTDfBJ30
100	125	35	60	60	25	1,140	Ball Bearing	100WSTDfBJ25
100	125	35	60	60	30	1,800	Ball Bearing	100WSTDfBJ30
150	190	50	80	80	30	2,040	Ball Bearing	150WSTDfBJ30
150	190	50	80	80	35	2,800	Ball Bearing	150WSTDfBJ35
150	190	50	80	80	40	3,380	Ball Bearing	150WSTDfBJ40
200	240	50	90	90	40	3,380	Ball Bearing	200WSTDfBJ40
200	240	50	90	90	50	5,100	Ball Bearing	200WSTDfBJ50
250	295	60	100	100	50	7,340	Ball Bearing	250WSTDfBJ50
250	295	60	100	100	60	7,700	Ball Bearing	250WSTDfBJ60
300	345	55	100	100	50	7,340	Ball Bearing	300WSTDfBJ50
300	345	55	100	100	60	8,500	Ball Bearing	300WSTDfBJ60
300	345	55	100	100	75	8,500	Ball Bearing	300WSTDfBJ75
300	345	65	100	100	60	9,000	Ball Bearing	300WSTDfBJ60X
300	345	65	100	100	75	9,785	Ball Bearing	300WSTDfBJ75X
350	395	60	110	110	60	9,000	Ball Bearing	350WSTDfBJ60
350	395	60	110	110	75	9,785	Ball Bearing	350WSTDfBJ75

Ball Bearing



Keywayed



Keywayed  
Refer to the chart below

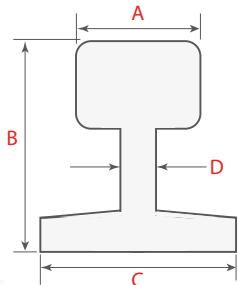
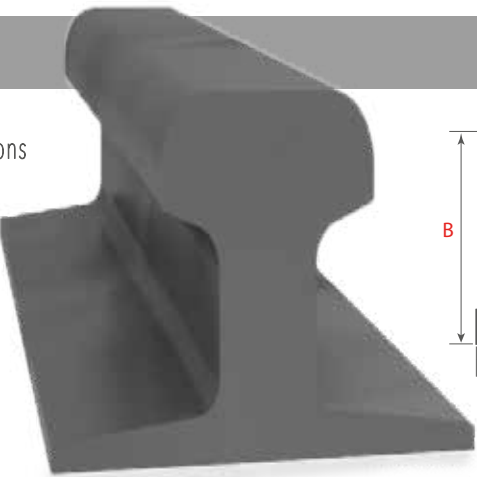
Wheel Bore Size (mm)	A Keyway Width (mm)	B Keyway Height (mm)
12	4	1.8
20	6	2.8
25	8	3.3
30	8	3.3
35	10	3.3
40	12	3.3
50	14	3.8
60	18	4.4
75	20	4.9

## Rail sections

### 'A' Section Crane Rails

For use with single/double flanged and flat tread machined wheels. Rail sections  
supplied in 12 metre length as standard and can be joined if required.

A Rail Head Width (mm)	B Total Height (mm)	C Base Width (mm)	D Web Width (mm)	Rail Section Weight (kg/m)	Product Code
45	55	125	24	22.1	A45
55	65	150	31	31.8	A55
65	75	175	38	43.1	A65
75	85	200	45	56.2	A75
100	95	200	60	74.3	A100
120	105	220	72	100	A120
150	150	220	80	150.3	A150



...Looking for the complete wheel system....don't forget your axles

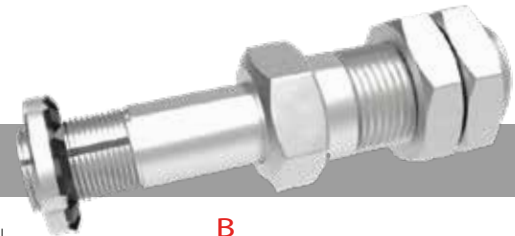
Machined to your exacting requirements.....the complete solution without the risk of non-compatible parts

Steel, Stainless Steel, Aluminium or brass  
....the possibilities are endless!  
Precision manufacturing to ensure both wheel  
and axle fit perfectly...the one stop shop!



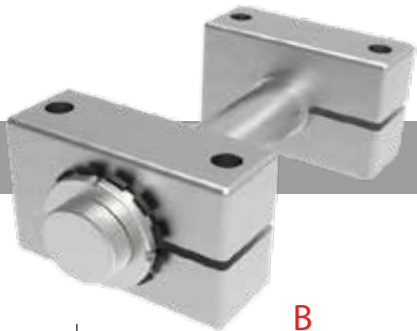
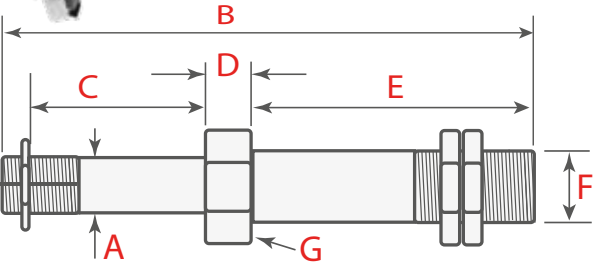


# Cantilevered Axle Assemblies



**Technical Specification**  
 High Tensile Machined steel to BS970. Designed to mount single wheels.  
 Measurement 'A' is designed to suit your internal bore dimension and measurement 'C' to suit the hub length of your wheel

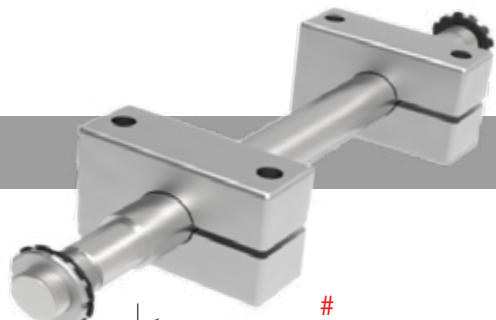
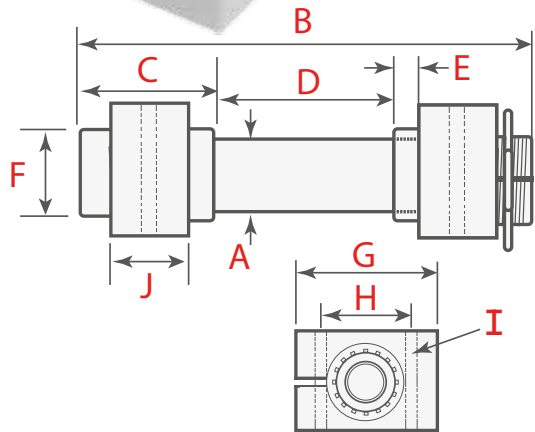
A	B	C	C	D	E	F	G			
To suit Axle Diameter (mm)	Total Length (mm)	Minimum Axle Hub Length (mm)	Maximum Axle Hub Length (mm)	Hex Nut Width (mm)	Fixing Length (mm)	Thread Diameter (mm)	Hex Nut Diameter (A/F)	Recommended minimum mounting plate thickness (mm)	Load Capacity (kg)	Product Code
20	119	35	45	15	50	M27	32	12	350	CLA20
25	137	40	52	15	60	M30	36	16	600	CLA25
30	170	50	65	20	75	M36	46	18	825	CLA30
35	207	60	85	20	90	M42	50	22	1,100	CLA35



# Single Mount Axle Assemblies

**Technical Specification**  
 High Tensile Machined steel to BS970. Designed to mount single wheels between the two axle blocks. Measurement 'A' is designed to suit your internal bore dimension and measurement 'D' to suit the hub length of your wheel. Supplied with two fixing blocks

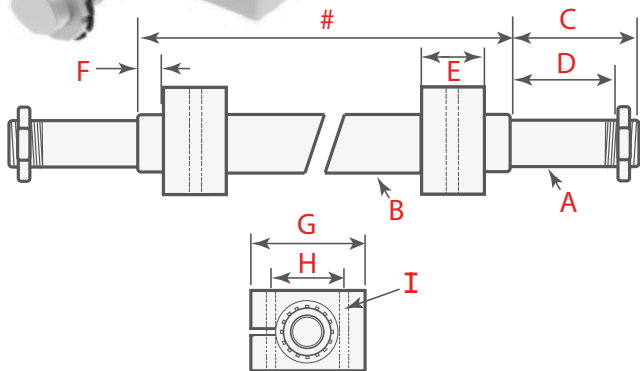
A	B	C	D	D	E	F	G	H	I	J		
To suit Axle Diameter (mm)	Total Length (mm)	Axle Shoulder Length (mm)	Minimum Axle Hub Length (mm)	Maximum Axle Hub Length (mm)	*Maximum Block Position (mm)	Shoulder Diameter (mm)	Fixing Block Length (mm)	Fixing Hole Centres (mm)	Fixing Bolt (mm)	Fixing Block Width (mm)	Load Capacity (kg)	Product Code
30	225	65	51	80	25	35	105	70	12	40	3,300	SMA30
35	225	65	51	80	25	40	105	70	12	40	7,000	SMA35
40	265	80	70	90	30	50	130	90	16	50	9,000	SMA40
50	340	105	80	110	40	60	170	120	20	65	14,000	SMA50
60	340	105	80	110	40	70	170	120	20	65	24,000	SMA60
75	390	120	80	125	40	85	210	150	24	80	40,000	SMA75



# Double Mount Axle Assemblies

**Technical Specification**  
 High Tensile Machined steel to BS970. Designed to mount two wheels. Measurement 'A' is designed to suit your internal bore dimension and measurement 'D' to suit the hub length of your wheel. Supplied with two fixing blocks

A	B	C	D	D	E	F	G	H	I		
To suit Axle Diameter (mm)	Bar Diameter (mm)	Total Mounting Length (mm)	Minimum Wheel Hub Width (mm)	Maximum Wheel Hub Width (mm)	Block Width (mm)	*Maximum Block Position (mm)	Axle Block Length (mm)	Fixing Hole Centres (mm)	Fixing Bolt (mm)	Load Capacity (kg)	Product Code
25	30	62	40	52	40	75	105	70	12	1,500	DMA25#
30	35	75	50	65	40	75	105	70	12	2,500	DMA30#
35	40	97	60	85	40	100	105	70	12	3,000	DMA35#
40	50	113	85	100	50	100	130	90	16	4,000	DMA40#
50	60	128	85	110	65	120	170	120	20	6,300	DMA50#
60	70	130	85	110	65	120	170	120	20	8,500	DMA60#
75	85	150	85	110	65	150	210	150	24	12,000	DMA75#



\* Maximum dimension at which the load capacity applies (each end). Ask for more details # Donates your required length, specified by you!

# BIL Castors & Wheels division

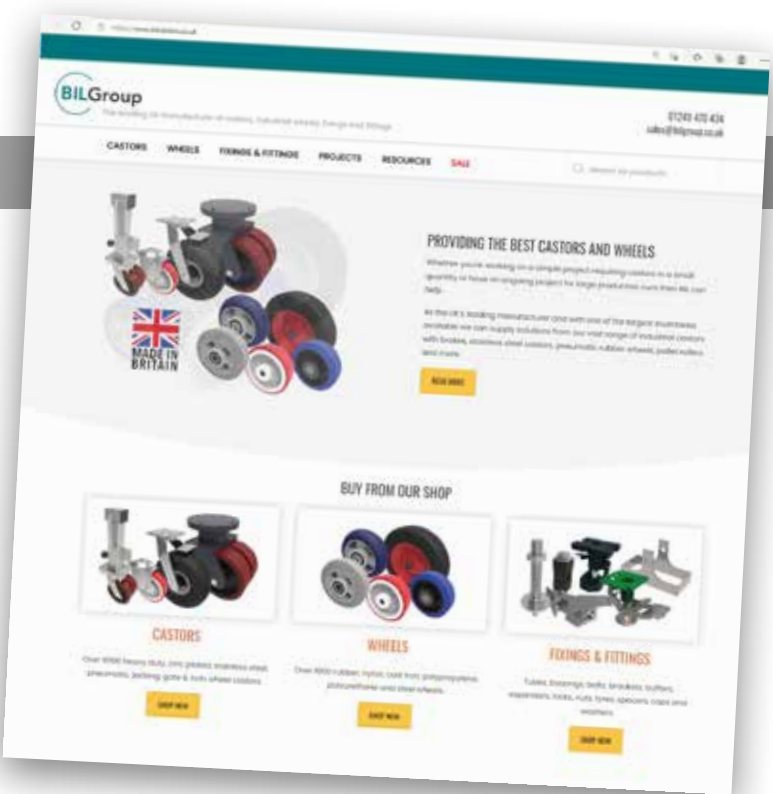
Established in 1972 as a castor and wheel Distributor we have since evolved into one of the UK's largest manufacturers and stock holders in our industry.

Our most important asset is our employees. A team of experienced staff all share our collective vision and have been loyal to us on average for over 10 years, some over 30 years! This wealth of knowledge and commitment has enabled us to maintain our competitive edge.

Our Primary Goal is to simply provide the very best quality castors and wheels for our customers according to our core brand values.

- Quality
- Innovation
- Service
- Flexibility

Please request one of our catalogues today or pay a visit to our website [www.bilcastors.co.uk](http://www.bilcastors.co.uk)







+44 (0)1249 822 222  
wheelsystems@bilgroup.co.uk

Porte Marsh Road, Calne, Wiltshire, SN11 9BW

