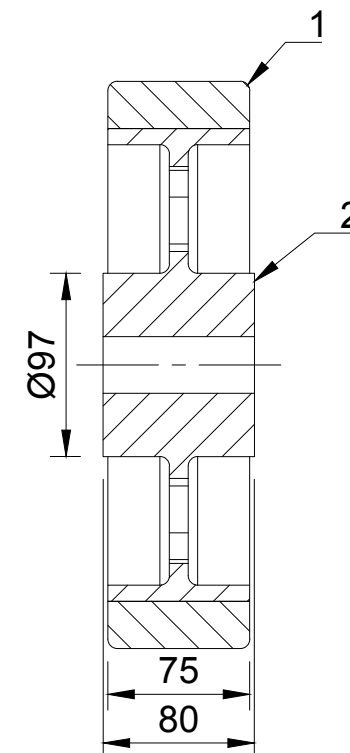
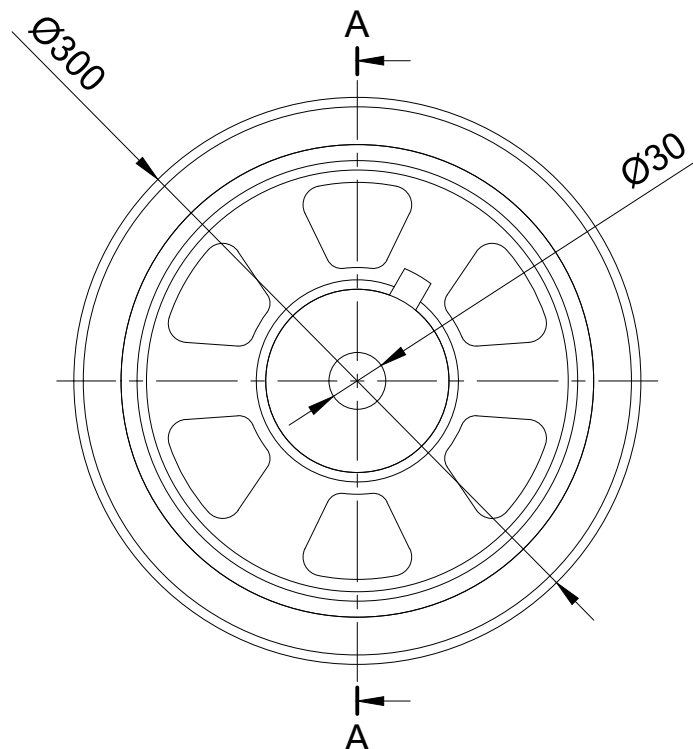




ITEM NO.	PART NUMBER	QTY
1	VULKOLLAN POLYURETHANE TYRE	1
2	CAST IRON RIM	1



A-A (1:4)

UNLESS OTHERWISE SPECIFIED DIMENSIONS ARE IN MILLIMETRES Unspecified Tolerances Machining ± 0.25mm Fabrication ± 1mm	DRAWING DISCLAIMER COPYRIGHT OF THIS DRAWING IS RESERVED BY BIL GROUP LTD. IT IS NOT REPRODUCED, COPIED, OR DISCLOSED TO A THIRD PARTY EITHER WHOLLY OR IN PART WITHOUT THE CONSENT IN WRITING OF BIL GROUP LTD		NAME	DATE	 <div>BIL Group Ltd Porte Marsh Road Calne, Wiltshire, SN11 9BW United Kingdom Tel +44 (0)1249 822 222 www.bilgroup.co.uk</div>	 <div>H Varley Ltd Unit 5 Century Park Pacific Rd, Broadheath, Altrincham, Cheshire WA14 5BJ Tel +44 (0)161 928 9617 www.varley-castors.co.uk</div>
		DRAWN BY	Matt	13/06/25		
		APPROVED BY	Kevin	13/06/25		
		SCALE	1:4			
		WEIGHT	12.283kg			
					DWG NO.	REV
					VULW300-75-80-PBM30	1
					VULW300-75-80-PBM30	SHEET 1 OF 1