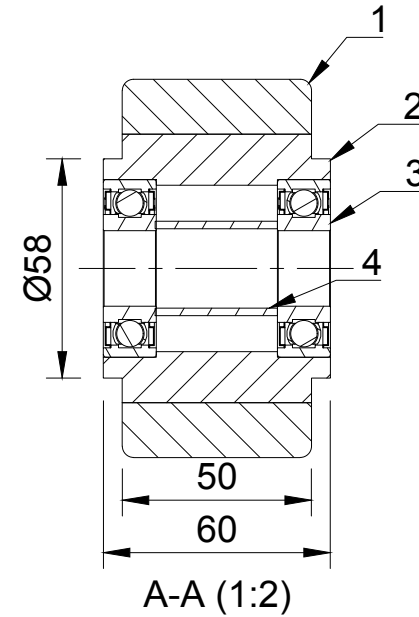
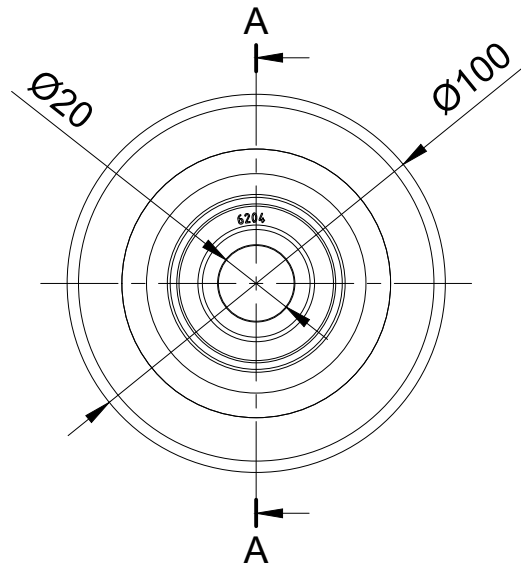




| ITEM NO. | PART NUMBER | QTY |
|----------|-------------------|-----|
| 1 | POLYURETHANE TYRE | 1 |
| 2 | CAST IRON RIM | 1 |
| 3 | BEARING6204 | 2 |
| 4 | BEARING SPACER | 1 |



| | | | | | |
|--|--|-------------|---------|----------|--|
| UNLESS OTHERWISE SPECIFIED DIMENSIONS ARE IN MILLIMETRES Unspecified Tolerances Machining ± 0.25mm Fabrication ± 1mm | DRAWING DISCLAIMER COPYRIGHT OF THIS DRAWING IS RESERVED BY BIL GROUP LTD. IT IS NOT REPRODUCED, COPIED, OR DISCLOSED TO A THIRD PARTY EITHER WHOLLY OR IN PART WITHOUT THE CONSENT IN WRITING OF BIL GROUP LTD | | NAME | DATE | <div><div>BIL Group Ltd Porte Marsh Road Calne, Wiltshire, SN11 9BW United Kingdom Tel +44 (0)1249 822 222 www.bilgroup.co.uk</div><div><div>H Varley Ltd Unit 5 Century Park Pacific Rd, Broadheath, Altrincham, Cheshire WA14 5BJ Tel +44 (0)161 928 9617 www.varley-castors.co.uk</div></div></div> |
| | | DRAWN BY | Matt | 03/07/25 | |
| | | APPROVED BY | Kevin | 03/07/25 | |
| | | SCALE | 1:2 | | |
| | | WEIGHT | 1.469kg | | |
| DWG NO. | | | | | REV |
| G100PTJ20 | | | | | 1 |
| G100PTJ20 | | | | | SHEET 1 OF 1 |