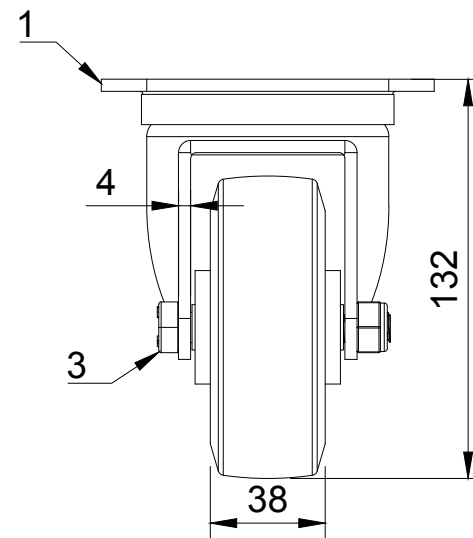




ITEM NO.	PART NUMBER	QTY
1	BZPH100AS	1
2	BZH100WRNRB15	1
3	AXLE KIT	
	TUBEM15X50	1
	HEXBOLTM10X70Z8.8	1
	NYLOCM10Z	1



<div>UNLESS OTHERWISE SPECIFIED DIMENSIONS ARE IN MILLIMETRES</div> <div>Unspecified Tolerances Machining ± 0.25mm Fabrication ± 1mm</div>	<div>DRAWING DISCLAIMER</div> <div>COPYRIGHT OF THIS DRAWING IS RESERVED BY BIL GROUP LTD. IT IS NOT REPRODUCED, COPIED, OR DISCLOSED TO A THIRD PARTY EITHER WHOLLY OR IN PART WITHOUT THE CONSENT IN WRITING OF BIL GROUP LTD</div>		NAME	DATE	<div><div>BIL Group Ltd Porte Marsh Road Calne, Wiltshire, SN11 9BW United Kingdom Tel +44 (0)1249 822 222 www.bilgroup.co.uk</div><div><div>H Varley Ltd Unit 5 Century Park Pacific Rd, Broadheath, Altrincham, Cheshire WA14 5BJ Tel +44 (0)161 928 9617 www.varley-castors.co.uk</div></div></div>
		DRAWN BY	Matt	24/04/25	
		APPROVED BY	Kevin	24/04/25	
		SCALE	2:5		
		WEIGHT	1.362kg		
			DWG NO.		<div>BZPH100RNB</div> <div>REV 1</div>
			<div>BZPH100RNB</div> <div>SHEET 1 OF 1</div>		