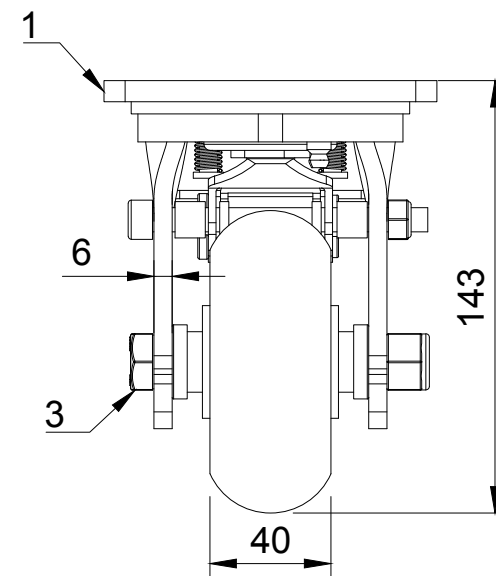


| ITEM NO. | PART NUMBER | QTY |
|----------|-------------------|-----|
| 1 | BZMJ100ASSWB | 1 |
| 2 | BZMH100WRSPABJM15 | 1 |
| 3 | AXLE KIT | |
| | TH15X5X12 | 2 |
| | WM12X25X5 | 2 |
| | HEXBOLTM12X90Z8.8 | 1 |
| | NYLOCM12Z14MM | 1 |



| | | | | | |
|--|---|-------------|---------|----------|---|
| <p>UNLESS OTHERWISE SPECIFIED DIMENSIONS ARE IN MILLIMETRES</p> <p>Unspecified Tolerances Machining $\pm 0.25\text{mm}$ Fabrication $\pm 1\text{mm}$</p> | <p>DRAWING DISCLAIMER</p> <p>COPYRIGHT OF THIS DRAWING IS RESERVED BY BIL GROUP LTD. IT IS NOT REPRODUCED, COPIED, OR DISCLOSED TO A THIRD PARTY EITHER WHOLLY OR IN PART WITHOUT THE CONSENT IN WRITING OF BIL GROUP LTD</p> | | NAME | DATE | <p>BILGroup</p> <p>BIL Group Ltd Porte Marsh Road Calne, Wiltshire, SN11 9BW United Kingdom Tel +44 (0)1249 822 222 www.bilgroup.co.uk</p> <p>VARLEY</p> <p>H Varley Ltd Unit 5 Century Park Pacific Rd, Broadheath, Altrincham, Cheshire WA14 5BJ Tel +44 (0)161 928 9617 www.varley-casters.co.uk</p> |
| | | DRAWN BY | Matt | 02/05/25 | |
| | | APPROVED BY | Kevin | 02/05/25 | |
| | | SCALE | 2:5 | | |
| | | WEIGHT | 2.678kg | | |
| <p>DWG NO. BZMJ100RSPABJSWB</p> | | | | | REV 1 |
| <p>BZMJ100RSPABJSWB</p> | | | | | SHEET 1 OF 1 |