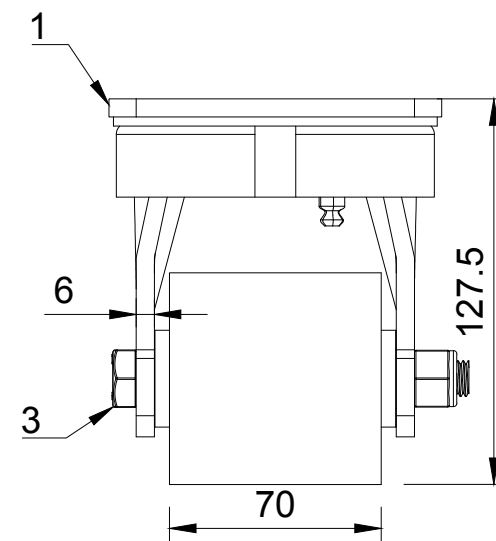




ITEM NO.	PART NUMBER	QTY
1	BZLLAS	1
2	BZH7070WPTBJM20	1
3	AXLE KIT	
	TUBEM20X80X12	1
	WM20X32X5	2
	BOLTM12X110Z8.8	1
	NYLOCM12Z14MM	1



<div>UNLESS OTHERWISE SPECIFIED DIMENSIONS ARE IN MILLIMETRES</div> <div>Unspecified Tolerances Machining ± 0.25mm Fabrication ± 1mm</div>	<div>DRAWING DISCLAIMER</div> <div>COPYRIGHT OF THIS DRAWING IS RESERVED BY BIL GROUP LTD. IT IS NOT REPRODUCED, COPIED, OR DISCLOSED TO A THIRD PARTY EITHER WHOLLY OR IN PART WITHOUT THE CONSENT IN WRITING OF BIL GROUP LTD</div>		NAME	DATE	<div><div>BIL Group Ltd Porte Marsh Road Calne, Wiltshire, SN11 9BW United Kingdom Tel +44 (0)1249 822 222 www.bilgroup.co.uk</div><div><div>H Varley Ltd Unit 5 Century Park Pacific Rd, Broadheath, Altrincham, Cheshire WA14 5BJ Tel +44 (0)161 928 9617 www.varley-castors.co.uk</div></div></div>	
		DRAWN BY	Matt	26/03/25		
		APPROVED BY	Steven	26/03/25	DWG NO.	<div>BZK70PTBJ</div> <div>REV 1</div>
		SCALE	2:5			
		WEIGHT	3.831kg		<div>BZK70PTBJ</div> <div>SHEET 1 OF 1</div>	