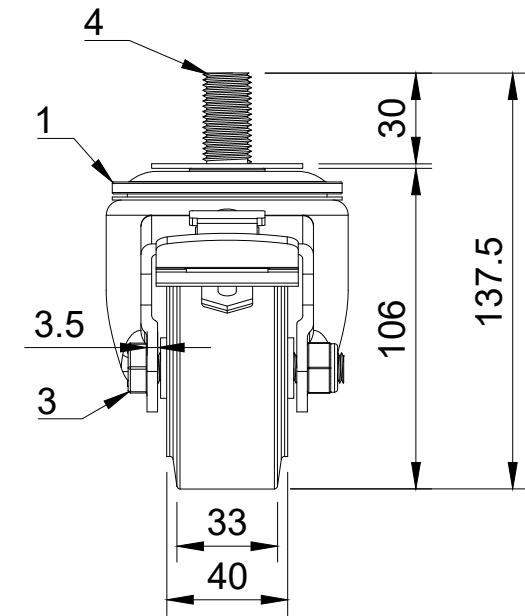



ITEM NO.	PART NUMBER	QTY
1	BZH80ASBH12SWB	1
2	BZH80WERBJM15	1
3	AXLE KIT	
	TH15X2X10	2
	HEXBOLTM10X65Z8.8	1
	NYLOCM10Z	1
4	BZPSTM16X30	1
	WM12X50X1.5Z	1
	WM12X50X1.5Z	1
	NYLOCM10Z	1



UNLESS OTHERWISE SPECIFIED DIMENSIONS ARE IN MILLIMETRES Unspecified Tolerances Machining ± 0.25mm Fabrication ± 1mm	DRAWING DISCLAIMER COPYRIGHT OF THIS DRAWING IS RESERVED BY BIL GROUP LTD. IT IS NOT REPRODUCED, COPIED, OR DISCLOSED TO A THIRD PARTY EITHER WHOLLY OR IN PART WITHOUT THE CONSENT IN WRITING OF BIL GROUP LTD		NAME	DATE	 BIL Group Ltd Porte Marsh Road Calne, Wiltshire, SN11 9BW United Kingdom Tel +44 (0)1249 822 222 www.bilgroup.co.uk
		DRAWN BY	Matt	24/10/23	
		APPROVED BY	Chris	24/10/23	
		SCALE	2:5		
		WEIGHT	1.317kg		
		DWG NO. BZH80ERBJSWBST		REV 1	
		BZH80ERBJSWBST		SHEET 1 OF 1	