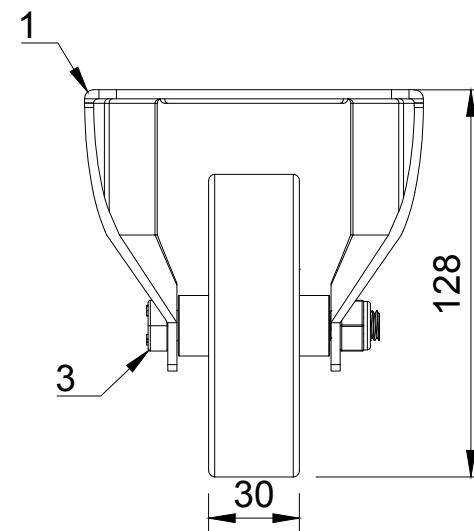




ITEM NO.	PART NUMBER	QTY
1	BZEHF100ASLP	1
2	BZH100WPTBJM15	1
3	AXLE KIT	
	TH15X10X10	2
	HEXBOLTM10X70Z8.8	1
	NYLOCM10Z	1



UNLESS OTHERWISE SPECIFIED DIMENSIONS ARE IN MILLIMETRES  Unspecified Tolerances Machining ± 0.25mm Fabrication ± 1mm	DRAWING DISCLAIMER  COPYRIGHT OF THIS DRAWING IS RESERVED BY BIL GROUP LTD. IT IS NOT REPRODUCED, COPIED, OR DISCLOSED TO A THIRD PARTY EITHER WHOLLY OR IN PART WITHOUT THE CONSENT IN WRITING OF BIL GROUP LTD		NAME	DATE	 <div>BIL Group Ltd Porte Marsh Road Calne, Wiltshire, SN11 9BW United Kingdom Tel +44 (0)1249 822 222 www.bilgroup.co.uk</div>  <div>H Varley Ltd Unit 5 Century Park Pacific Rd, Broadheath, Altrincham, Cheshire WA14 5BJ Tel +44 (0)161 928 9617 www.varley-castors.co.uk</div>
		DRAWN BY	Matt	27/06/25	
		APPROVED BY	Kevin	27/06/25	
		SCALE	2:5		
		WEIGHT	1.394kg		
DWG NO. BZEHF100PTBJLP					REV 1
BZEHF100PTBJLP					SHEET 1 OF 1