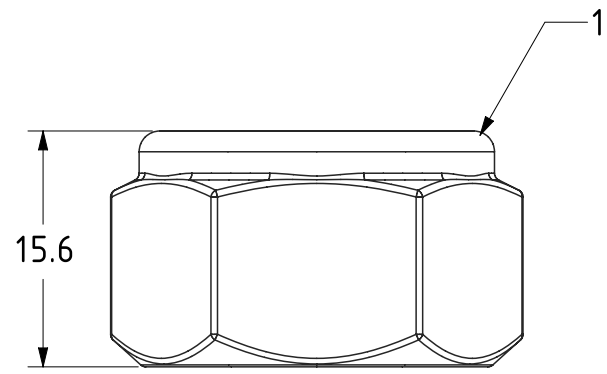
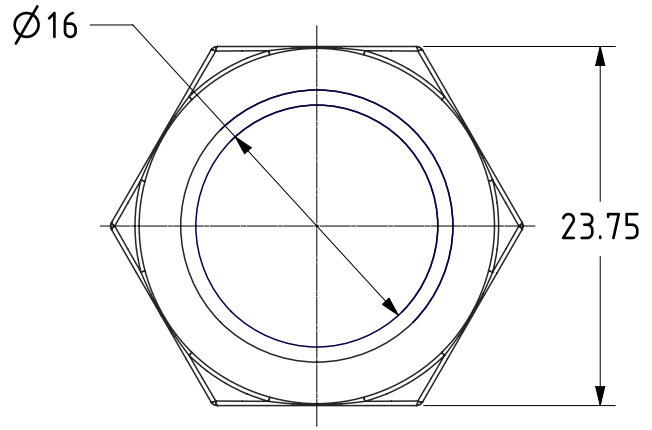





| ITEM NO. | PART NUMBER | QTY |
|----------|-------------|-----|
| 1 | NYLOC NUT | 1 |



| | | | | | | | |
|---|--|-------------|---------|----------|---|-------------|--------------|
| UNLESS OTHERWISE SPECIFIED DIMENSIONS ARE IN MILLIMETRES Unspecified Tolerances Machining ± 0.25mm Fabrication ± 1mm | DRAWING DISCLAIMER COPYRIGHT OF THIS DRAWING IS RESERVED BY BIL GROUP LTD. IT IS ISSUED ON CONDITION THAT IT IS NOT REPRODUCED, COPIED, OR DISCLOSED TO A THIRD PARTY EITHER WHOLLY OR IN PART WITHOUT THE CONSENT IN WRITING OF BIL GROUP LTD. | | NAME | DATE |  BIL Group Ltd, Porte Marsh Road, Calne Wiltshire, SN11 9BW, United Kingdom Tel +44 (0)1249 822 222 Fax: +44 (0)1249 822 300 www.bilgroup.co.uk | | |
| | | DRAWN | Matt | 11/08/21 | | | |
| | | APPROVED BY | Kevin | 11/08/21 | DWG NO. | NM16NYTHINZ | REV 1 |
| | | SCALE | 2:1 | | NM16NYTHINZ | | SHEET 1 OF 1 |
| | | WEIGHT | 0.031kg | | | | |