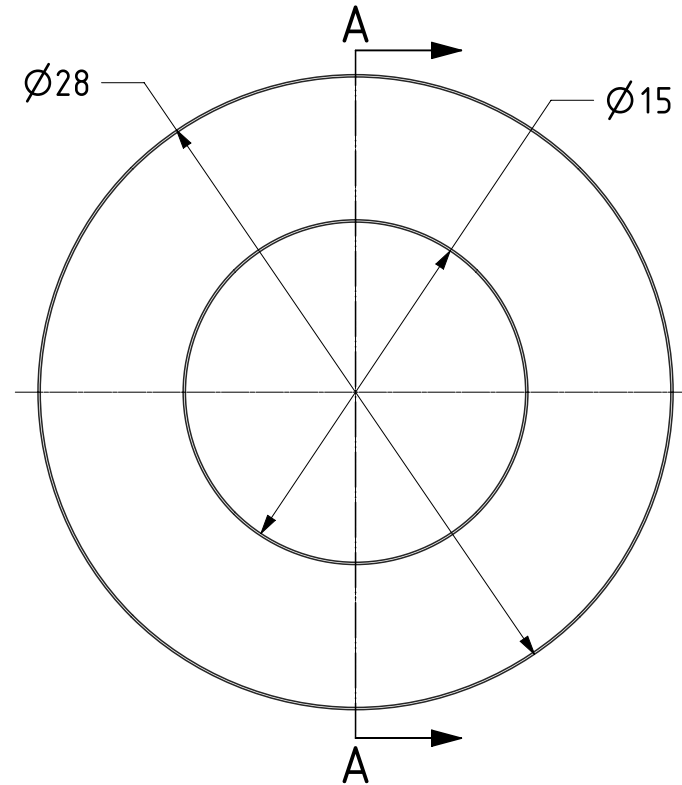
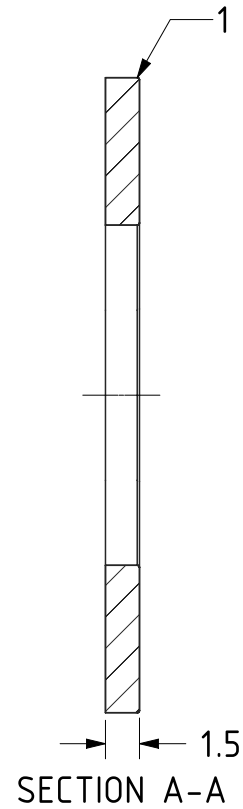




| | | |
|----------|--------------------|-----|
| ITEM NO. | PART NUMBER | QTY |
| 1 | ZINC PLATED WASHER | 1 |



UNLESS OTHERWISE SPECIFIED DIMENSIONS ARE IN MILLIMETRES

Unspecified Tolerances
Machining $\pm 0.25\text{mm}$
Fabrication $\pm 1\text{mm}$

DRAWING DISCLAIMER

COPYRIGHT OF THIS DRAWING IS RESERVED BY BIL GROUP LTD. IT IS ISSUED ON CONDITION THAT IT IS NOT REPRODUCED, COPIED, OR DISCLOSED TO A THIRD PARTY EITHER WHOLLY OR IN PART WITHOUT THE CONSENT IN WRITING OF BIL GROUP LTD.

| | | |
|-------------|---------|----------|
| | NAME | DATE |
| DRAWN | Matt | 10/01/23 |
| APPROVED BY | Kevin | 10/01/23 |
| SCALE | 3:1 | |
| WEIGHT | 0.006kg | |

| | | |
|---|---|--------------|
|  | BIL Group Ltd, Porte Marsh Road, Calne, Wiltshire, SN11 9BW, United Kingdom Tel +44 (0)1249 822 222 www.bilgroup.co.uk | |
| | DWG NO. WM14X28X1.6Z | REV 1 |
| WM14X28X1.6Z | | SHEET 1 OF 1 |