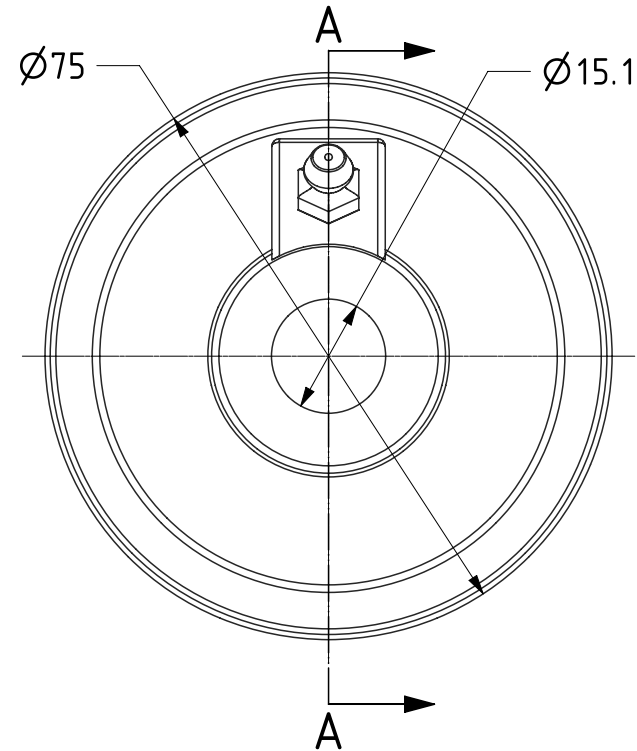
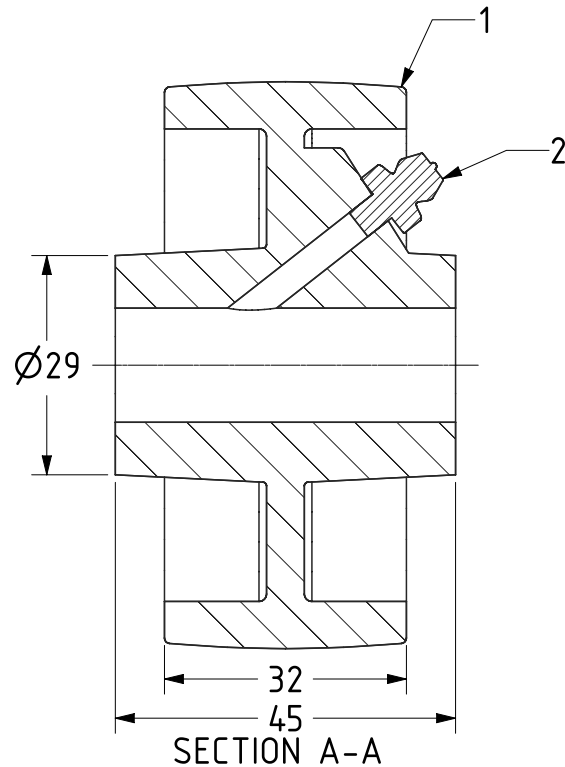



| ITEM NO. | PART NUMBER | QTY |
|----------|-----------------|-----|
| 1 | CAST IRON WHEEL | 1 |
| 2 | GREASE NIPPLE | 1 |



| | | | | | | |
|---|--|-------------|---------|----------|--|----------|
| UNLESS OTHERWISE SPECIFIED DIMENSIONS ARE IN MILLIMETRES Unspecified Tolerances Machining $\pm 0.25\text{mm}$ Fabrication $\pm 1\text{mm}$ | DRAWING DISCLAIMER COPYRIGHT OF THIS DRAWING IS RESERVED BY BIL GROUP LTD. IT IS ISSUED ON CONDITION THAT IT IS NOT REPRODUCED, COPIED, OR DISCLOSED TO A THIRD PARTY EITHER WHOLLY OR IN PART WITHOUT THE CONSENT IN WRITING OF BIL GROUP LTD. | | NAME | DATE |  BIL Group Ltd, Porte Marsh Road, Calne Wiltshire, SN11 9BW, United Kingdom Tel +44 (0)1249 822 222 Fax: +44 (0)1249 822 300 www.bilgroup.co.uk | REV 1 |
| | | DRAWN | Matt | 13/05/22 | | |
| | | APPROVED BY | Kevin | 13/05/22 | | |
| | | SCALE | 1:1 | | DWG NO. | BZH75WCI |
| | | WEIGHT | 0.617kg | | BZH75WCI SHEET 1 OF 1 | |