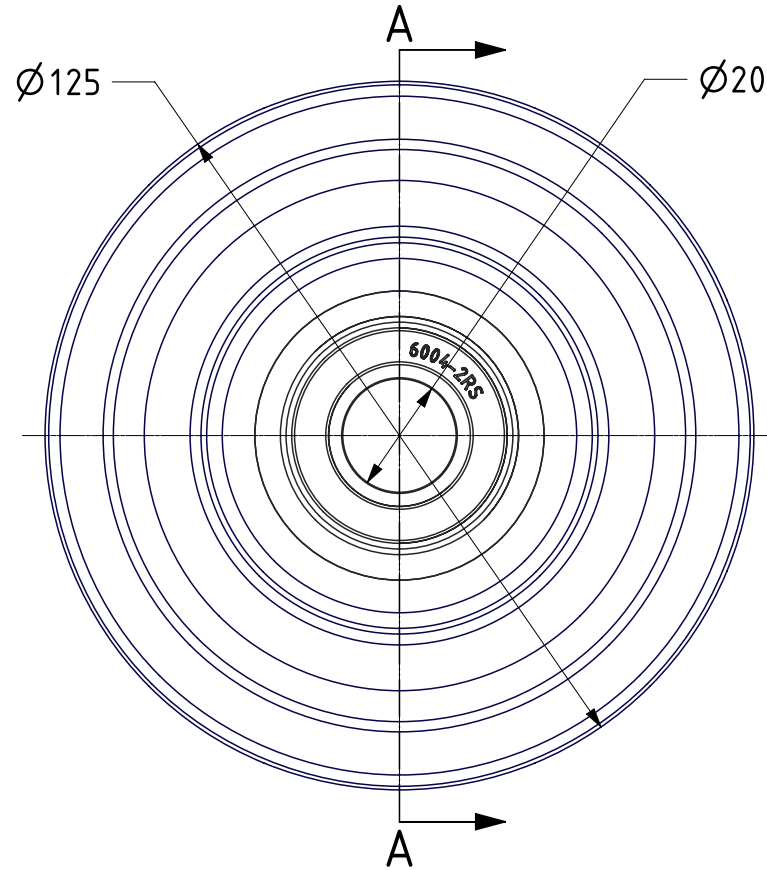
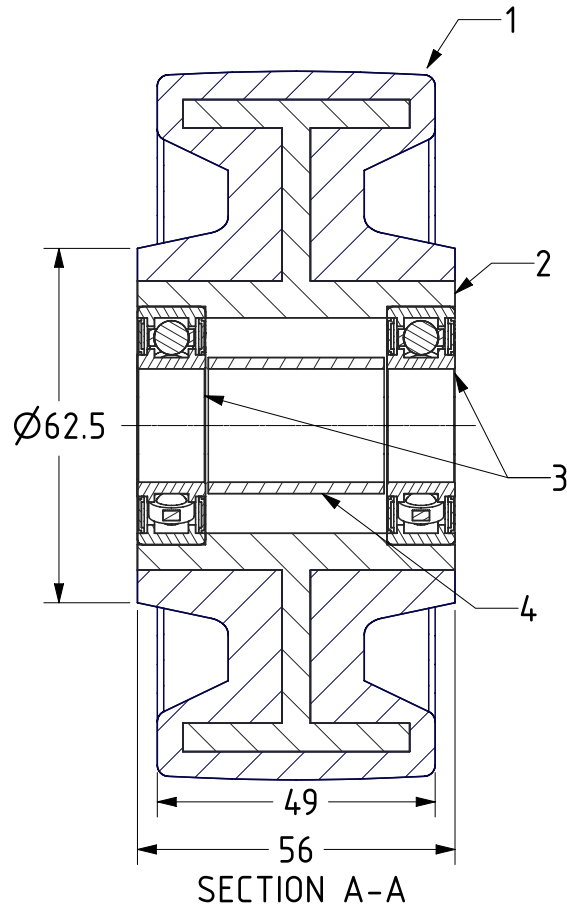



ITEM NO.	PART NUMBER	QTY
1	SOLID CAST POLYURETHANE TYRE	1
2	CAST IRON RIM	1
3	BEARING6004	2
4	BEARING SPACER	1



UNLESS OTHERWISE SPECIFIED DIMENSIONS ARE IN MILLIMETRES  Unspecified Tolerances Machining ± 0.25mm Fabrication ± 1mm	DRAWING DISCLAIMER  COPYRIGHT OF THIS DRAWING IS RESERVED BY BIL GROUP LTD. IT IS ISSUED ON CONDITION THAT IT IS NOT REPRODUCED, COPIED, OR DISCLOSED TO A THIRD PARTY EITHER WHOLLY OR IN PART WITHOUT THE CONSENT IN WRITING OF BIL GROUP LTD.	NAME	DATE	 BIL Group Ltd, Porte Marsh Road, Calne Wiltshire, SN11 9BW, United Kingdom Tel +44 (0)1249 822 222 Fax: +44 (0)1249 822 300 www.bilgroup.co.uk	DWG NO. <b>BZH125WPKBJM20</b>	REV <b>1</b>	
		DRAWN	Matt				06/05/22
		APPROVED BY	Kevin				06/05/22
		SCALE	3:4				
		WEIGHT	0.978kg				
				BZH125WPKBJM20		SHEET 1 OF 1	