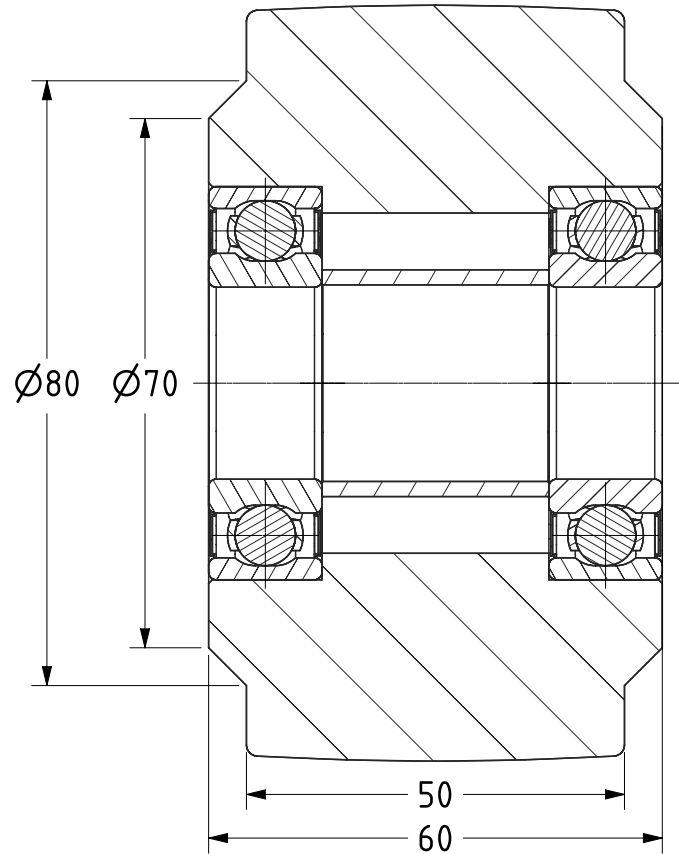
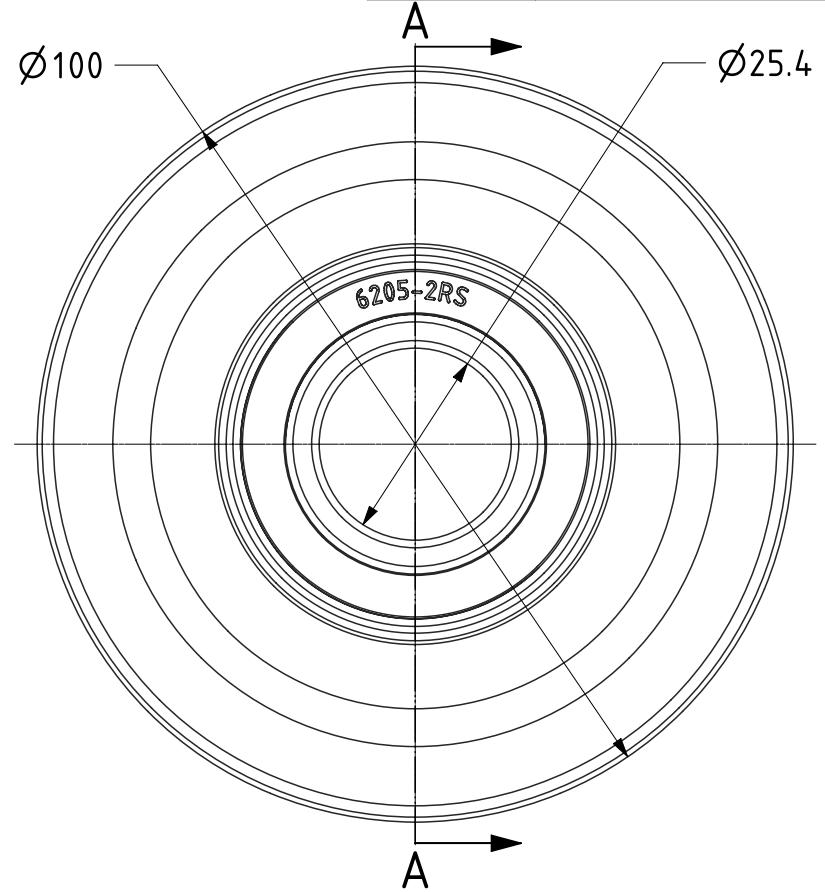





| ITEM NO. | PART NUMBER      | QTY |
|----------|------------------|-----|
| 1        | BZXH100WNYBJ6205 | 1   |
| 2        | BEARING6205X1    | 2   |
| 3        | BSM25XM30        | 1   |



SECTION A-A



|   |  |             |                                  |                    |   |
|---|--|-------------|----------------------------------|--------------------|---|
| UNLESS OTHERWISE SPECIFIED DIMENSIONS ARE IN MILLIMETRES<br><br>Unspecified Tolerances<br>Machining ± 0.25mm<br>Fabrication ± 1mm | DRAWING DISCLAIMER<br><br>COPYRIGHT OF THIS DRAWING IS RESERVED BY BIL GROUP LTD. IT IS ISSUED ON CONDITION THAT IT IS NOT REPRODUCED, COPIED, OR DISCLOSED TO A THIRD PARTY EITHER WHOLLY OR IN PART WITHOUT THE CONSENT IN WRITING OF BIL GROUP LTD. |             | NAME                             | DATE               |  BIL Group Ltd, Porte Marsh Road, Calne<br>Wiltshire, SN11 9BW, United Kingdom<br>Tel +44 (0)1249 822 222 Fax: +44 (0)1249 822 300<br>www.bilgroup.co.uk |
|   |  | DRAWN       | Matt                             | 01/11/21           |   |
|   |  | APPROVED BY | Kevin                            | 01/11/21           |   |
|   |  | SCALE       | 1:1                              |                    |   |
|   |  | WEIGHT      | 0.660kg                          |                    |   |
|   |  |             | DWG NO.                          | BZXH100WNYBJM254WT | REV<br>1  |
|   |  |             | BZXH100WNYBJM254/WT SHEET 1 OF 1 |                    |   |