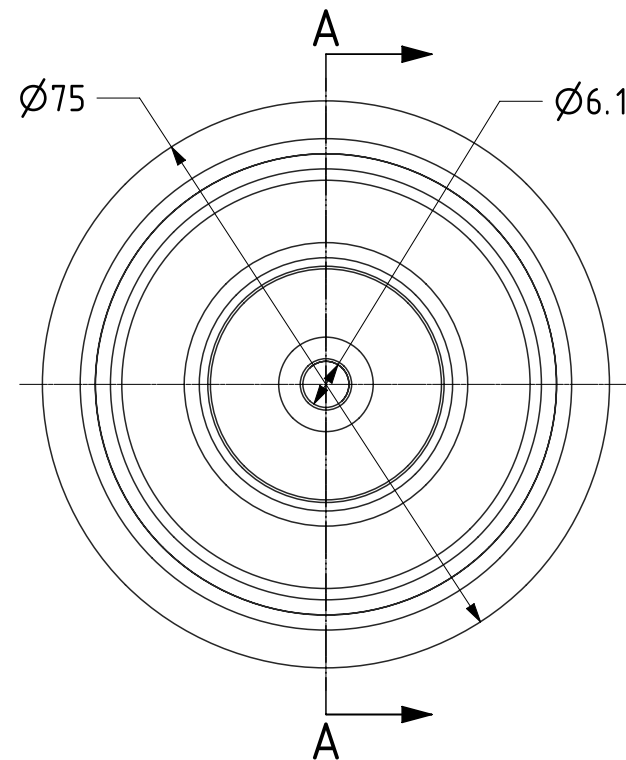
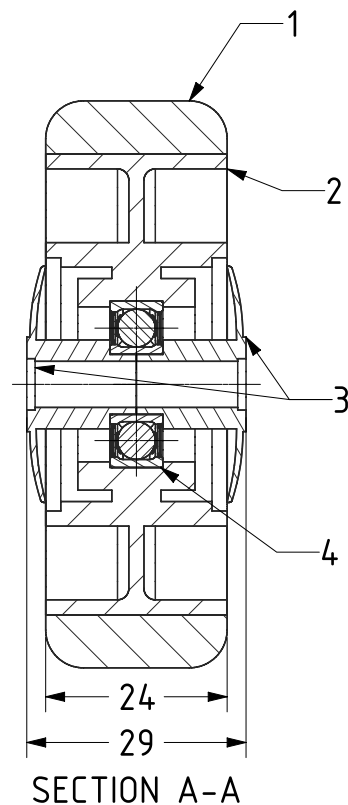


ITEM NO.	PART NUMBER	QTY
1	THERMOPLASTIC RUBBER TYRE	1
2	POLYPROPYLENE RIM	1
3	CAP	2
4	BEARING608RS	1



UNLESS OTHERWISE  
SPECIFIED  
DIMENSIONS ARE IN  
MILLIMETRES

Unspecified Tolerances  
Machining  $\pm 0.25\text{mm}$   
Fabrication  $\pm 1\text{mm}$

#### DRAWING DISCLAIMER

COPYRIGHT OF THIS DRAWING IS  
RESERVED BY BIL GROUP LTD. IT IS  
ISSUED ON CONDITION THAT IT IS  
NOT REPRODUCED, COPIED, OR  
DISCLOSED TO A THIRD PARTY  
EITHER WHOLLY OR IN PART  
WITHOUT THE CONSENT IN  
WRITING OF BIL GROUP LTD.

	NAME	DATE
DRAWN	Matt	11/11/21
APPROVED BY	Kevin	12/11/21
SCALE	1:1	
WEIGHT	0.072kg	



BIL Group Ltd, Porte Marsh Road, Calne  
Wiltshire, SN11 9BW, United Kingdom  
Tel +44 (0)1249 822 222 Fax: +44 (0)1249 822 300  
www.bilgroup.co.uk

DWG NO.

BZRA75WGRBJM6

REV  
1

BZRA75WGRBJM6

SHEET 1 OF 1