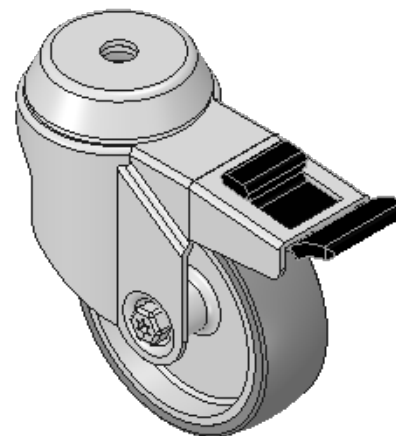
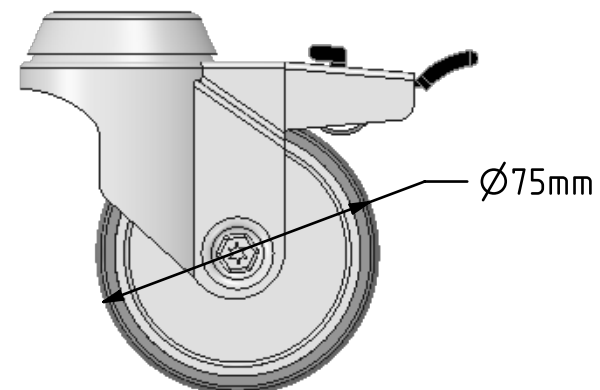
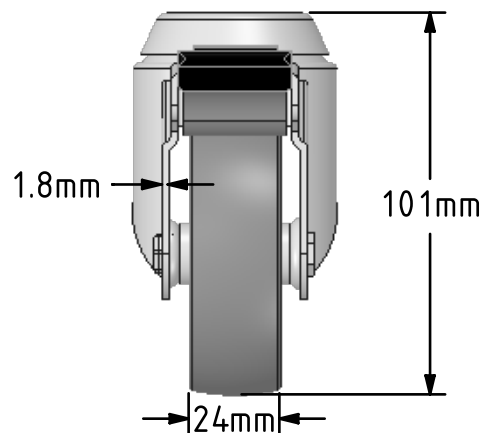
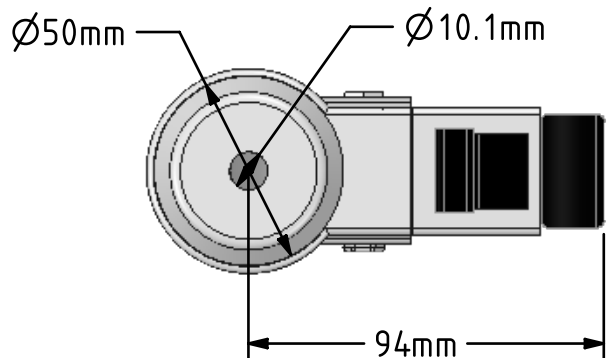



DRAWING DISCLAIMER  
 COPYRIGHT OF THIS DRAWING IS RESERVED BY BIL GROUP LTD. IT IS ISSUED ON CONDITION THAT IT IS NOT REPRODUCED, COPIED, OR DISCLOSED TO A THIRD PARTY EITHER WHOLLY OR IN PART WITHOUT THE CONSENT IN WRITING OF BIL GROUP LTD.



Description:  
 SSRA75VGRBH10SWB

Grade 304 Stainless steel swivel castor with a 10mm bolt hole fitted with a grey rubber tyred polypropylene centred wheel with plain bore wheel and a total lock brake. Wheel diameter 75mm, tread width 24mm, overall height 101mm, Load capacity 60kg.



	NAME	DATE	 BIL Group Ltd, Porte Marsh Road, Calne Wiltshire, SN11 9BW, United Kingdom Tel +44 (0)1249 822 222 Fax: +44 (0)1249 822 300 www.bilgroup.co.uk	
DRAWN	Matt	22/06/17	TITLE	
APPROVED BY	Tim W	22/06/17	SSRA75VGRBH10SWB	
SCALE	1:2	22/06/17	SIZE	DWG NO.
WEIGHT	0.295kg	22/06/17	A4	BILCW03SSRA75VGRBH10SWB__01
UNLESS OTHERWISE SPECIFIED DIMENSIONS ARE IN MILLIMETRES			REV	1
Unspecified Tolerances Machining ± 0.25mm Fabrication ± 1mm			FILE NAME BILCW03SSRA75VGRBH10SWB__01.PDF SHEET 1 OF 1	