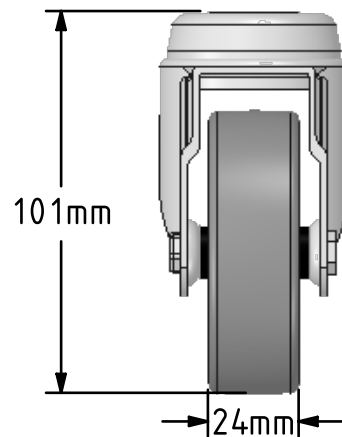
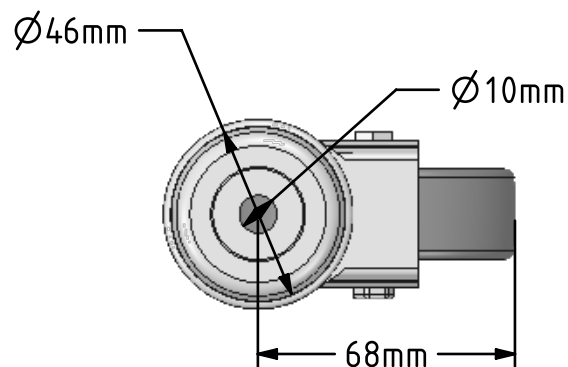
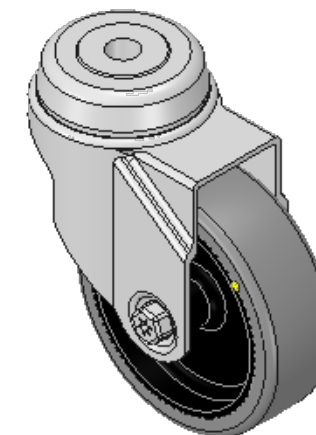
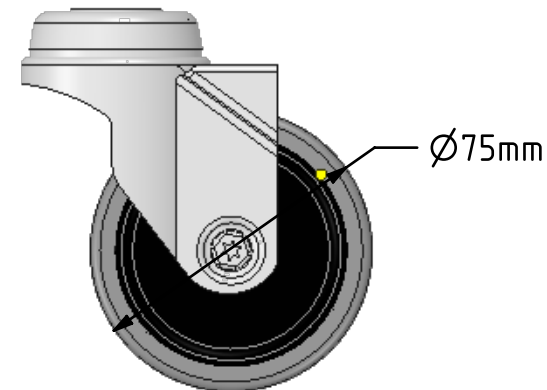



DRAWING DISCLAIMER

COPYRIGHT OF THIS DRAWING IS RESERVED BY BIL GROUP LTD. IT IS ISSUED ON CONDITION THAT IT IS NOT REPRODUCED, COPIED, OR DISCLOSED TO A THIRD PARTY EITHER WHOLLY OR IN PART WITHOUT THE CONSENT IN WRITING OF BIL GROUP LTD.

**Description:**
SSRA75GRECBH10

Grade 304 Pressed stainless steel swivel castor with a 10mm bolt hole fitted with a grey electrically conductive rubber tyre on polypropylene centred wheel with a plain bearing. Wheel diameter 75mm, tread width 24mm, overall height 101mm. Load capacity 60kg. Conductive offers a resistance $R < 10\text{K}\Omega$



	NAME	DATE	 BIL Group Ltd, Porte Marsh Road, Calne Wiltshire, SN11 9BW, United Kingdom Tel +44 (0)1249 822 222 Fax: +44 (0)1249 822 300 www.bilgroup.eu	
DRAWN	Matt	16/08/16		
APPROVED BY	Tim W	16/08/16		
SCALE	1:2	16/08/16		
WEIGHT	0.252kg	16/08/16		
UNLESS OTHERWISE SPECIFIED DIMENSIONS ARE IN MILLIMETRES			TITLE	
Unspecified Tolerances Machining $\pm 0.25\text{mm}$ Fabrication $\pm 1\text{mm}$			SSRA75GRECBH10	
			SIZE A4	REV 1
			FILE NAME BILCW03SSRA75GRECBH10_01.PDF SHEET 1 OF 1	