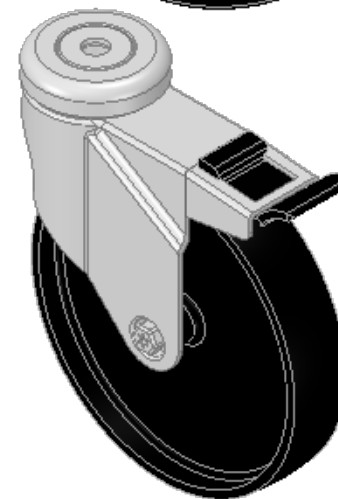
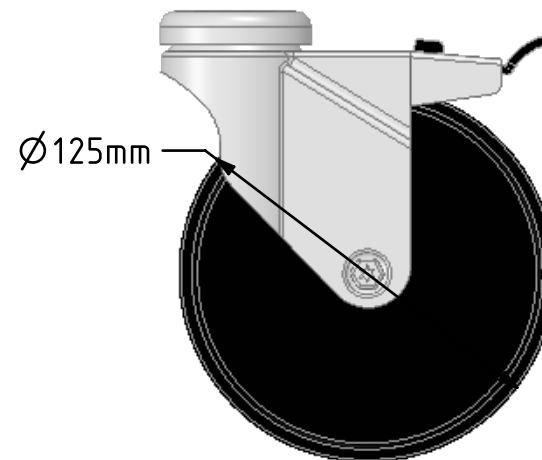
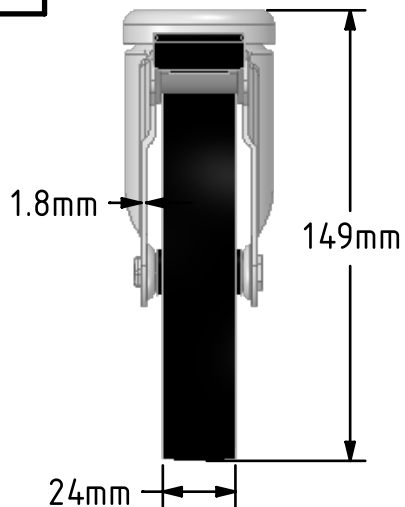
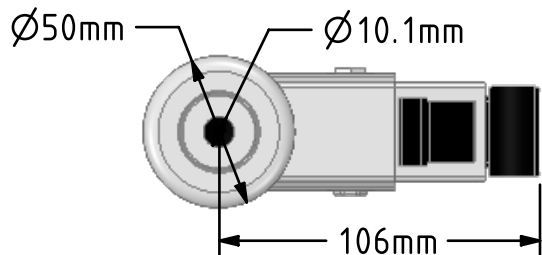


DRAWING DISCLAIMER
 COPYRIGHT OF THIS DRAWING IS RESERVED BY BIL GROUP LTD. IT IS ISSUED ON CONDITION THAT IT IS NOT REPRODUCED, COPIED, OR DISCLOSED TO A THIRD PARTY EITHER WHOLLY OR IN PART WITHOUT THE CONSENT IN WRITING OF BIL GROUP LTD.



Description:
 SSRA125PLBH10SWB

Grade 304 Pressed stainless steel swivel castor with a 10mm bolt hole fitted with a black polypropylene wheel with a plain bearing and a total lock brake. Wheel diameter 125mm, tread width 24mm, overall height 149mm. Load capacity 80kg



	NAME	DATE
DRAWN	Matt	08/10/18
APPROVED BY	Chris	08/10/18
SCALE	2.5	08/10/18
WEIGHT	0.363kg	08/10/18



BIL Group Ltd, Porte Marsh Road, Calne
 Wiltshire, SN11 9BW, United Kingdom
 Tel +44 (0)1249 822 222 Fax: +44 (0)1249 822 300
 www.bilgroup.co.uk

TITLE

SSRA125PLBH10SWB

UNLESS OTHERWISE SPECIFIED DIMENSIONS ARE IN MILLIMETRES

Unspecified Tolerances
 Machining $\pm 0.25\text{mm}$
 Fabrication $\pm 1\text{mm}$

SIZE	DWG NO.	REV
A4	BILCW03SSRA125PLBH10SWB_01	1

FILE NAME BILCW03SSRA125PLBH10SWB_01.PDF SHEET 1 OF 1