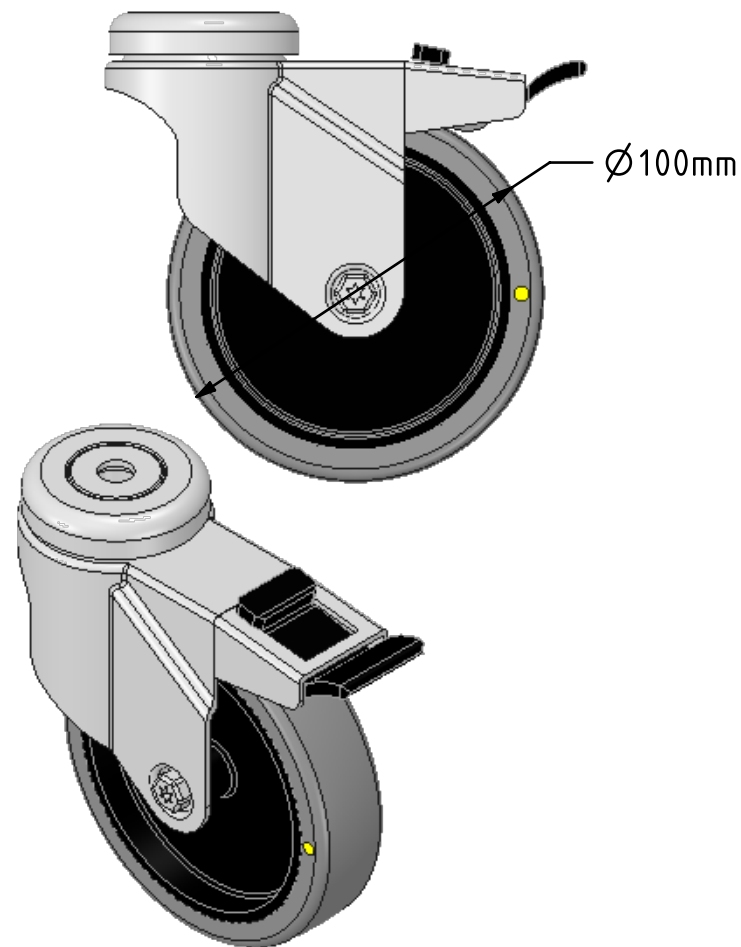
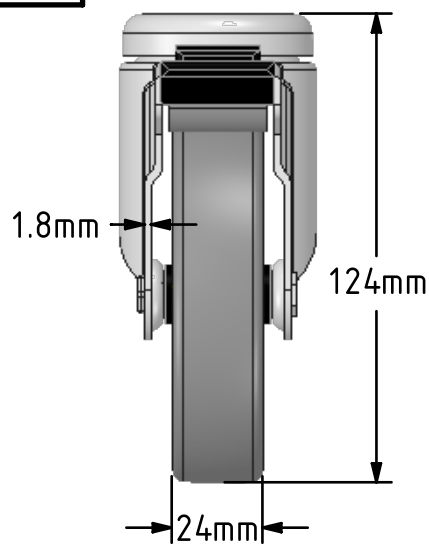
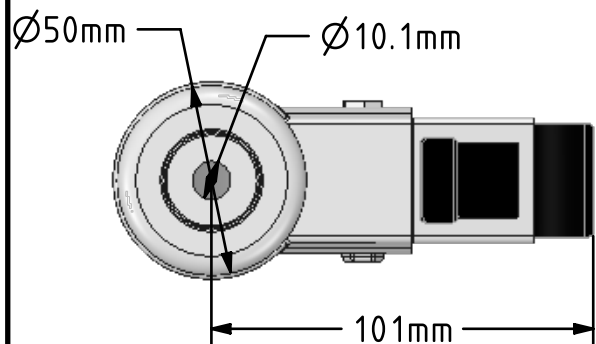
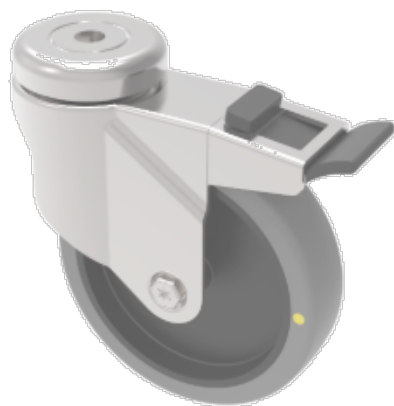


DRAWING DISCLAIMER
 COPYRIGHT OF THIS DRAWING IS RESERVED BY BIL GROUP LTD. IT IS ISSUED ON CONDITION THAT IT IS NOT REPRODUCED, COPIED, OR DISCLOSED TO A THIRD PARTY EITHER WHOLLY OR IN PART WITHOUT THE CONSENT IN WRITING OF BIL GROUP LTD.



Description:
 SSRA100GRECBH10

Grade 304 Pressed stainless steel swivel castor with a 10mm bolt hole fitted with a grey electrically conductive rubber tyre on polypropylene centred wheel with a plain bearing. Wheel diameter 100mm, tread width 24mm, overall height 124mm. load capacity 70kg. Conductive offers a resistance $R < 10K\Omega$



	NAME	DATE
DRAWN	Matt	25/11/16
APPROVED BY	Chris	25/11/16
SCALE	1:2	25/11/16
WEIGHT	0.367kg	25/11/16



BIL Group Ltd, Porte Marsh Road, Calne
 Wiltshire, SN11 9BW, United Kingdom
 Tel +44 (0)1249 822 222 Fax: +44 (0)1249 822 300
 www.bilgroup.eu

TITLE		
SSRA100GRECBH10SWB		
SIZE	DWG NO.	REV
A4	BILCW03SSRA100GRECBH10SWB_01	1
FILE NAME BILCW03SSRA100GRECBH10SWB_01.PDF SHEET 1 OF 1		

UNLESS OTHERWISE SPECIFIED DIMENSIONS ARE IN MILLIMETRES

Unspecified Tolerances
 Machining $\pm 0.25\text{mm}$
 Fabrication $\pm 1\text{mm}$