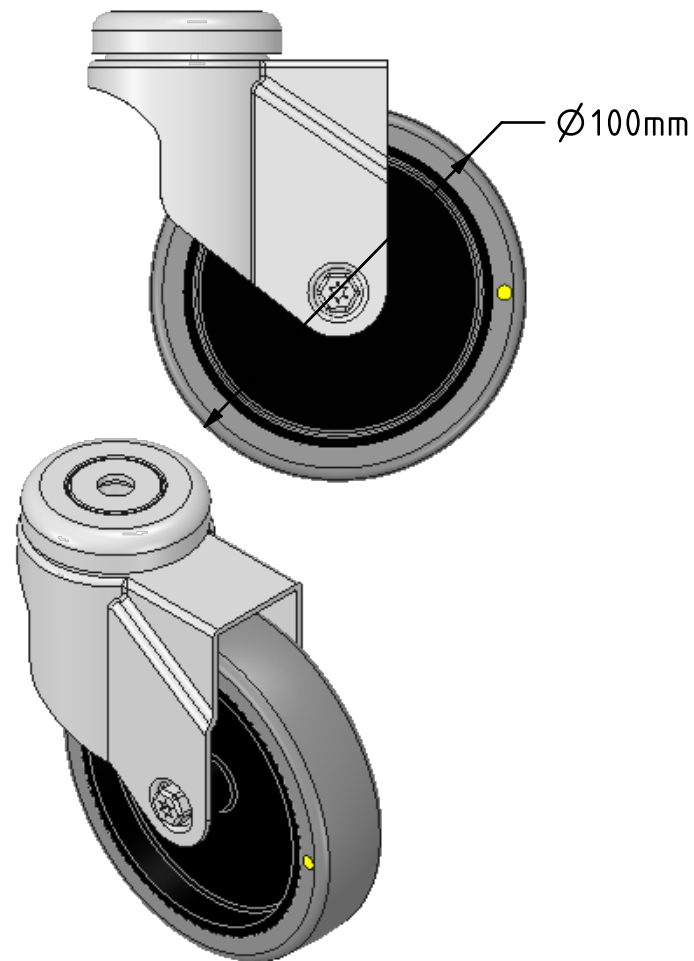
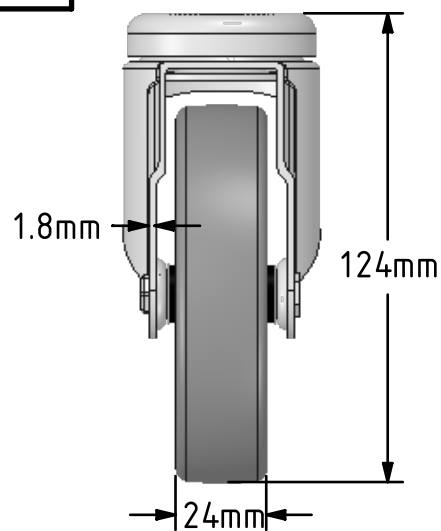
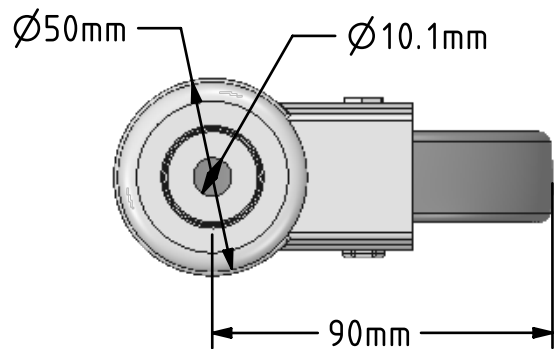
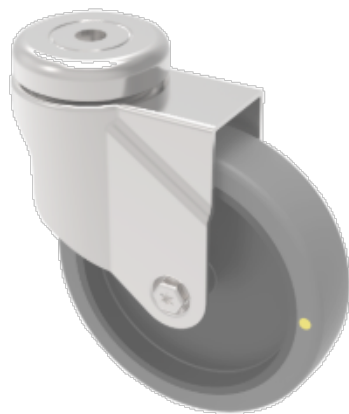


DRAWING DISCLAIMER  
 COPYRIGHT OF THIS DRAWING IS RESERVED BY BIL GROUP LTD. IT IS ISSUED ON CONDITION THAT IT IS NOT REPRODUCED, COPIED, OR DISCLOSED TO A THIRD PARTY EITHER WHOLLY OR IN PART WITHOUT THE CONSENT IN WRITING OF BIL GROUP LTD.



Description:  
 SSRA100GRECBH10

Grade 304 Pressed stainless steel swivel castor with a 10mm bolt hole fitted with a grey electrically conductive rubber tyre on polypropylene centred wheel with a plain bearing. Wheel diameter 100mm, tread width 24mm, overall height 124mm. load capacity 70kg. Conductive offers a resistance  $R < 10K\Omega$



	NAME	DATE
DRAWN	Matt	25/11/16
APPROVED BY	Chris	25/11/16
SCALE	1:2	25/11/16
WEIGHT	0.318kg	25/11/16

UNLESS OTHERWISE SPECIFIED DIMENSIONS ARE IN MILLIMETRES

Unspecified Tolerances  
 Machining  $\pm 0.25\text{mm}$   
 Fabrication  $\pm 1\text{mm}$



BIL Group Ltd, Porte Marsh Road, Calne  
 Wiltshire, SN11 9BW, United Kingdom  
 Tel +44 (0)1249 822 222 Fax: +44 (0)1249 822 300  
 www.bilgroup.eu

TITLE

SSRA100GRECBH10

SIZE	DWG NO.	REV
A4	BILCW03SSRA100GRECBH10__01	1

FILE NAME BILCW03SSRA100GRECBH10\_\_01.PDF SHEET 1 OF 1