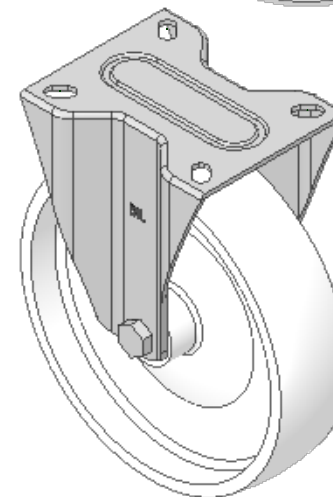
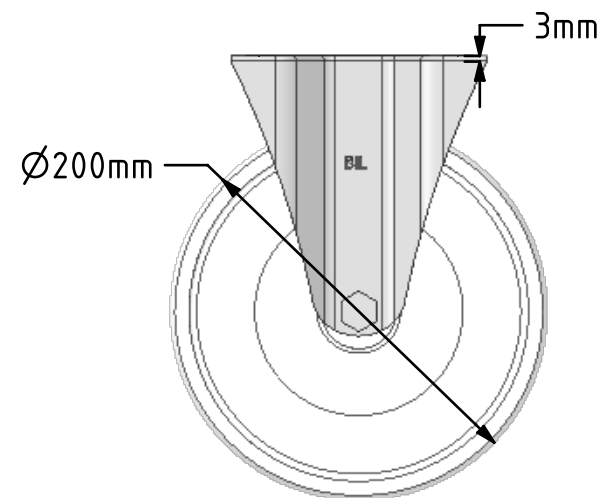
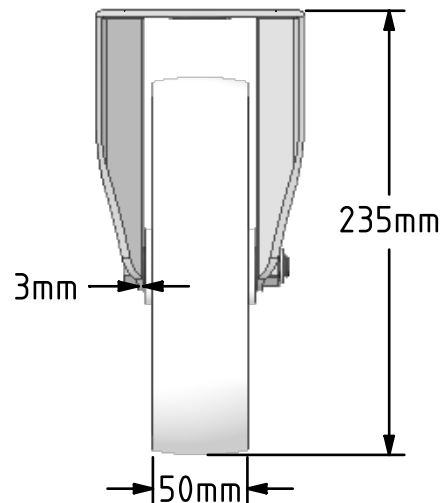
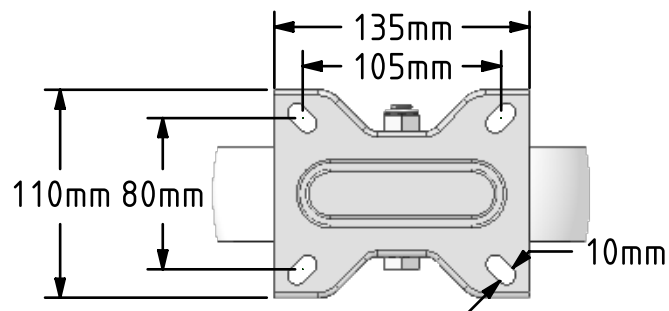


DRAWING DISCLAIMER
 COPYRIGHT OF THIS DRAWING IS RESERVED BY BIL GROUP LTD. IT IS ISSUED ON CONDITION THAT IT IS NOT REPRODUCED, COPIED, OR DISCLOSED TO A THIRD PARTY EITHER WHOLLY OR IN PART WITHOUT THE CONSENT IN WRITING OF BIL GROUP LTD.



Description:
 SSMMF200NY

Grade 304 Pressed stainless steel fixed castor with a top plate fixing fitted with a white nylon wheel and a plain bearing. Wheel diameter 200mm, tread width 50mm, overall height 235mm, top plate 135mm x 110mm, hole centres 105mm x 80mm. Load capacity 400kg.



	NAME	DATE
DRAWN	Matt	06/03/19
APPROVED BY	Tim W	06/03/19
SCALE	1:4	06/03/19
WEIGHT	1.588kg	06/03/19

 BIL Group Ltd, Porte Marsh Road, Calne
 Wiltshire, SN11 9BW, United Kingdom
 Tel +44 (0)1249 822 222 Fax: +44 (0)1249 822 300
 www.bilgroup.co.uk

TITLE		REV
SSMMF200NY		2
SIZE	DWG NO.	
A4	BILCW03SSMMF200NY__02	
FILE NAME	SHEET 1 OF 1	
BILCW03SSMMF200NY__02.PDF		

UNLESS OTHERWISE SPECIFIED DIMENSIONS ARE IN MILLIMETRES

Unspecified Tolerances
 Machining ± 0.25mm
 Fabrication ± 1mm