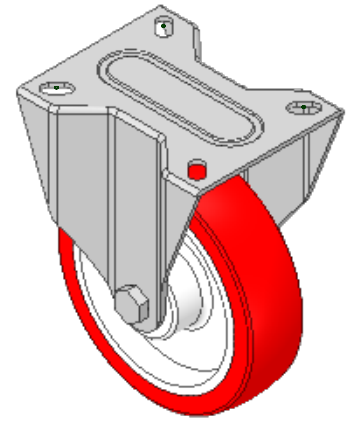
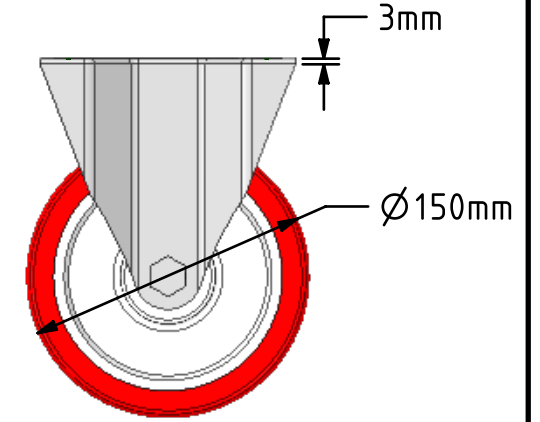
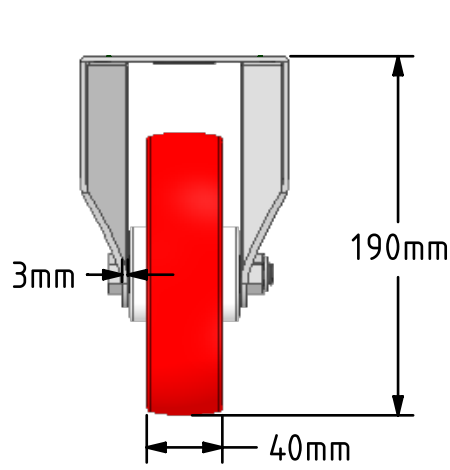
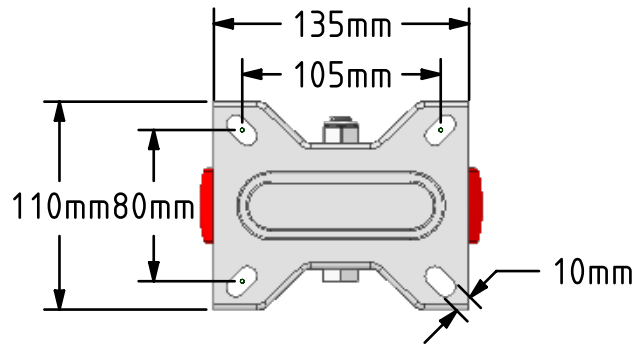
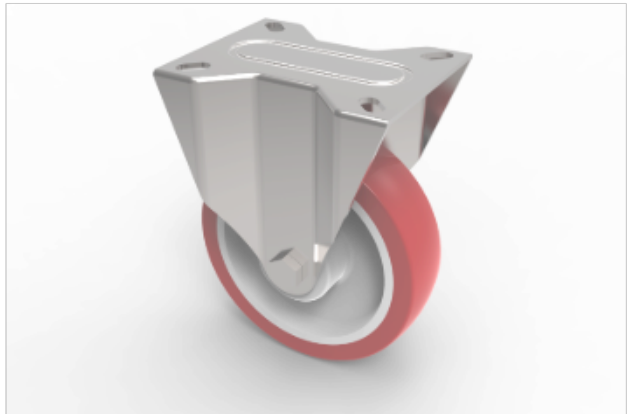



**DRAWING DISCLAIMER**  
 COPYRIGHT OF THIS DRAWING IS RESERVED BY BIL GROUP LTD. IT IS ISSUED ON CONDITION THAT IT IS NOT REPRODUCED, COPIED, OR DISCLOSED TO A THIRD PARTY EITHER WHOLLY OR IN PART WITHOUT THE CONSENT IN WRITING OF BIL GROUP LTD.



**Description:**  
 SSMMF150NP

Grade 304 Pressed stainless steel fixed castor with a top plate fixing fitted with a red polyurethane white nylon centred wheel with a plain bearing. Wheel diameter 150mm, tread width 40mm, overall height 190mm, top plate 135mm x 110mm, hole centres 105mm x 80mm. Load capacity 400kg.



	NAME	DATE	 BIL Group Ltd, Porte Marsh Road, Calne Wiltshire, SN11 9BW, United Kingdom Tel +44 (0)1249 822 222 Fax: +44 (0)1249 822 300 www.bilgroup.co.uk
DRAWN	Matt	06/03/19	
APPROVED BY	Tim W	06/03/19	
SCALE	1:4	06/03/19	
WEIGHT	1.418kg	06/03/19	TITLE
UNLESS OTHERWISE SPECIFIED DIMENSIONS ARE IN MILLIMETRES  Unspecified Tolerances Machining ± 0.25mm Fabrication ± 1mm			SSMMF 150NP
SIZE		DWG NO.	REV
A4		BILCW03SSMMF150NP__02	2
FILE NAME		BILCW03SSMMF150NP__02.PDF	SHEET 1 OF 1