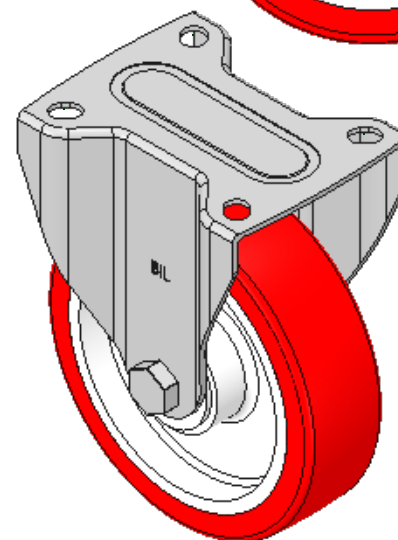
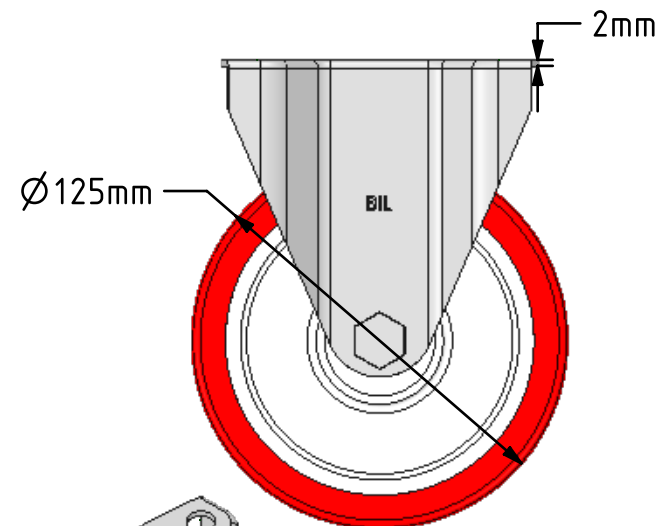
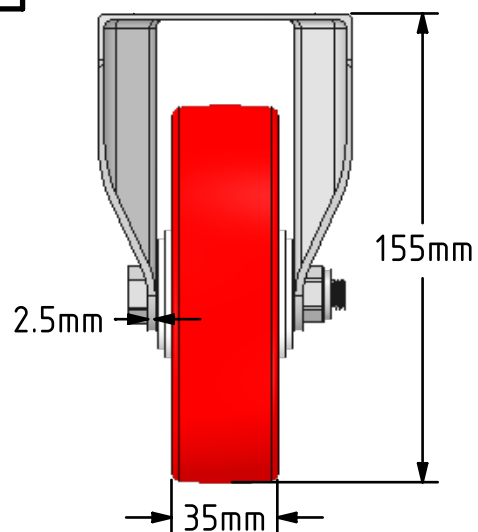
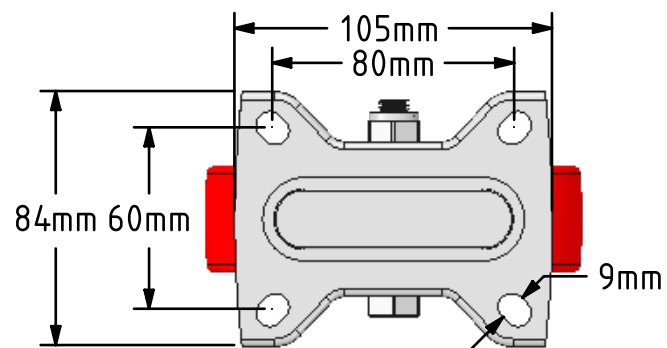


DRAWING DISCLAIMER
 COPYRIGHT OF THIS DRAWING IS RESERVED BY BIL GROUP LTD. IT IS ISSUED ON CONDITION THAT IT IS NOT REPRODUCED, COPIED, OR DISCLOSED TO A THIRD PARTY EITHER WHOLLY OR IN PART WITHOUT THE CONSENT IN WRITING OF BIL GROUP LTD.



Description:
 SSMMF125NPB

Grade 304 Pressed stainless steel fixed castor, fitted with a top plate, red polyurethane on white nylon centred wheel, with roller bearings, 125mm wheel diameter, 35mm tread width, 155mm overall height, 105 x 84 top plate, 80 x 60mm bolt holes, with a load capacity of 200kgs.



	NAME	DATE
DRAWN	Matt	18/07/18
APPROVED BY	Tim W	18/07/18
SCALE	2:5	18/07/18
WEIGHT	0.841kg	18/07/18

 BIL Group Ltd, Porte Marsh Road, Calne
 Wiltshire, SN11 9BW, United Kingdom
 Tel +44 (0)1249 822 222 Fax: +44 (0)1249 822 300
 www.bilgroup.co.uk

TITLE
 SSMMF125NPB

UNLESS OTHERWISE SPECIFIED DIMENSIONS ARE IN MILLIMETRES
 Unspecified Tolerances
 Machining ± 0.25mm
 Fabrication ± 1mm

SIZE	DWG NO.	REV
A4	BILCW03SSMMF125NPB_01	1
FILE NAME BILCW03SSMMF125NPB_01.PDF		SHEET 1 OF 1