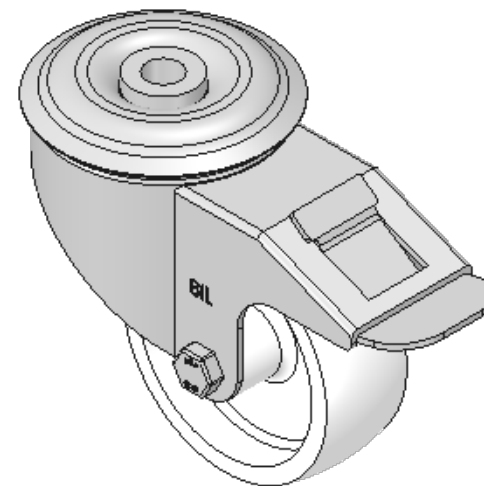
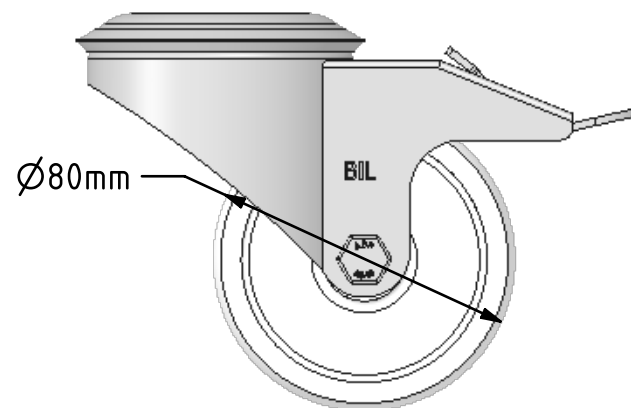
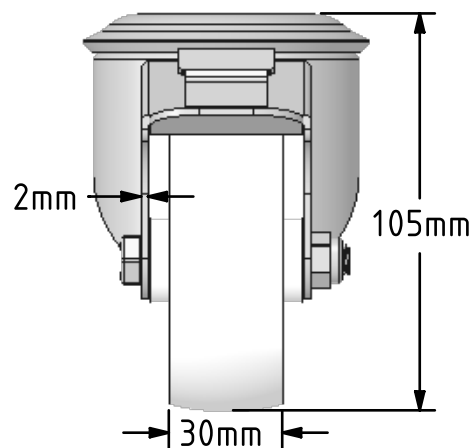
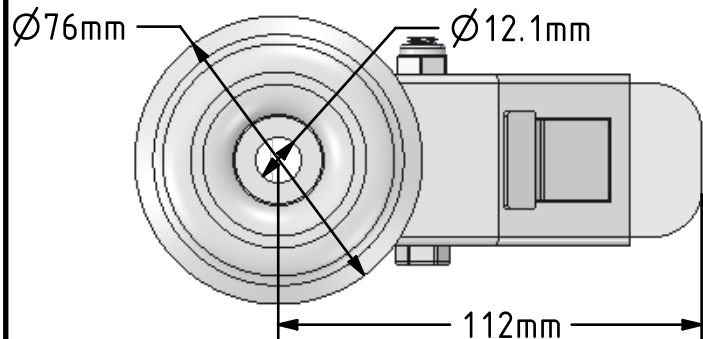



DRAWING DISCLAIMER  
 COPYRIGHT OF THIS DRAWING IS RESERVED BY BIL GROUP LTD. IT IS ISSUED ON CONDITION THAT IT IS NOT REPRODUCED, COPIED, OR DISCLOSED TO A THIRD PARTY EITHER WHOLLY OR IN PART WITHOUT THE CONSENT IN WRITING OF BIL GROUP LTD.



Description:  
 SSMM80NYBH12SWB

Grade 304 Pressed stainless steel swivel castor with 12mm bolt hole fixing fitted with a white nylon wheel and plain bearing and swivel wheel brake. Wheel diameter 80mm, tread width 30mm overall height 105mm. Load capacity 150kg.



	NAME	DATE	 BIL Group Ltd, Porte Marsh Road, Calne Wiltshire, SN11 9BW, United Kingdom Tel +44 (0)1249 822 222 Fax: +44 (0)1249 822 300 www.bilgroup.co.uk
DRAWN	Matt	12/02/18	
APPROVED BY	Chris	12/02/18	
SCALE	1:2	12/02/18	
WEIGHT	0.646kg	12/02/18	
UNLESS OTHERWISE SPECIFIED DIMENSIONS ARE IN MILLIMETRES  Unspecified Tolerances Machining ± 0.25mm Fabrication ± 1mm			TITLE SSMM80NYBH12SWB
SIZE	DWG NO.	REV	
A4	BILCW03SSMM80NYBH12SWB_01	1	
FILE NAME BILCW03SSMM80NYBH12SWB_01.PDF			SHEET 1 OF 1