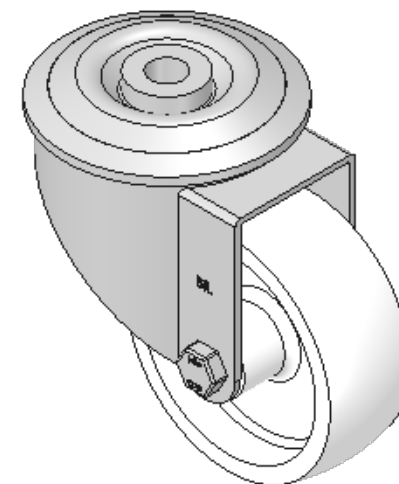
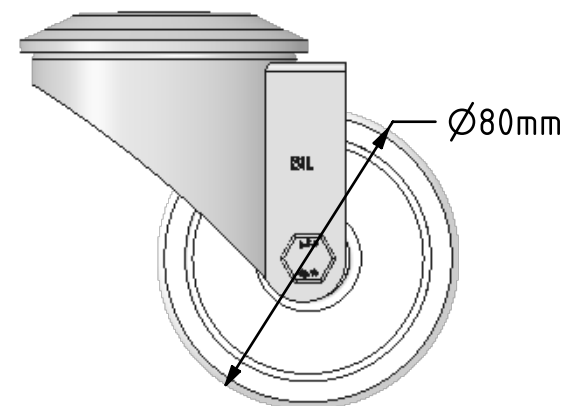
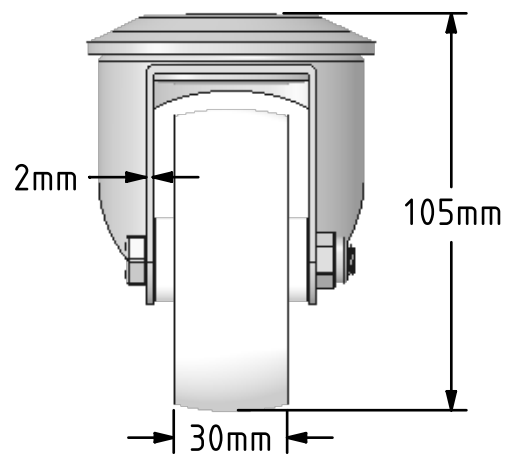
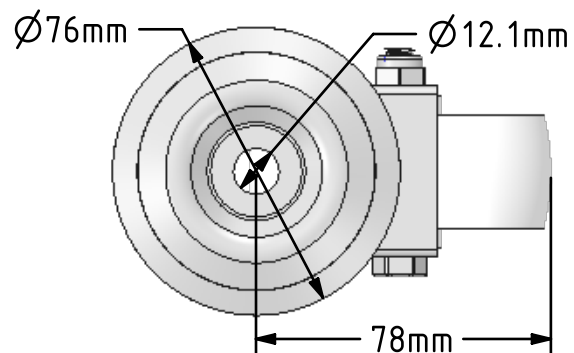



DRAWING DISCLAIMER  
 COPYRIGHT OF THIS DRAWING IS RESERVED BY BIL GROUP LTD. IT IS ISSUED ON CONDITION THAT IT IS NOT REPRODUCED, COPIED, OR DISCLOSED TO A THIRD PARTY EITHER WHOLLY OR IN PART WITHOUT THE CONSENT IN WRITING OF BIL GROUP LTD.



Description:  
 SSMM80NYBH12

Grade 304 Pressed stainless steel swivel castor with a 12mm bolt hole fixing fitted with a white nylon wheel with plain bearing. Wheel diameter 80mm tread width 30mm, overall height 105mm. Load capacity 150kg.



|   |                            |          |   |
|---|----------------------------|----------|---|
|   | NAME                       | DATE     |  BIL Group Ltd, Porte Marsh Road, Calne<br>Wiltshire, SN11 9BW, United Kingdom<br>Tel +44 (0)1249 822 222 Fax: +44 (0)1249 822 300<br>www.bilgroup.co.uk |
| DRAWN   | Matt                       | 12/02/18 |   |
| APPROVED BY   | Chris                      | 12/02/18 |   |
| SCALE   | 1:2                        | 12/02/18 |   |
| WEIGHT  | 0.54kg                     | 12/02/18 | TITLE   |
| UNLESS OTHERWISE SPECIFIED DIMENSIONS ARE IN MILLIMETRES<br><br>Unspecified Tolerances<br>Machining ± 0.25mm<br>Fabrication ± 1mm |                            |          | SSMM80NYBH12  |
| SIZE  | DWG NO.                    | REV      |   |
| A4  | BILCW03SSMM80NYBH12_01     | 1        |   |
| FILE NAME   | BILCW03SSMM80NYBH12_01.PDF |          | SHEET 1 OF 1  |