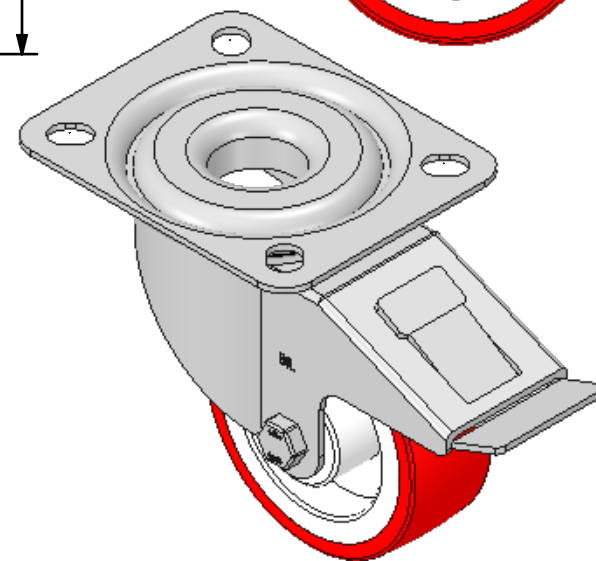
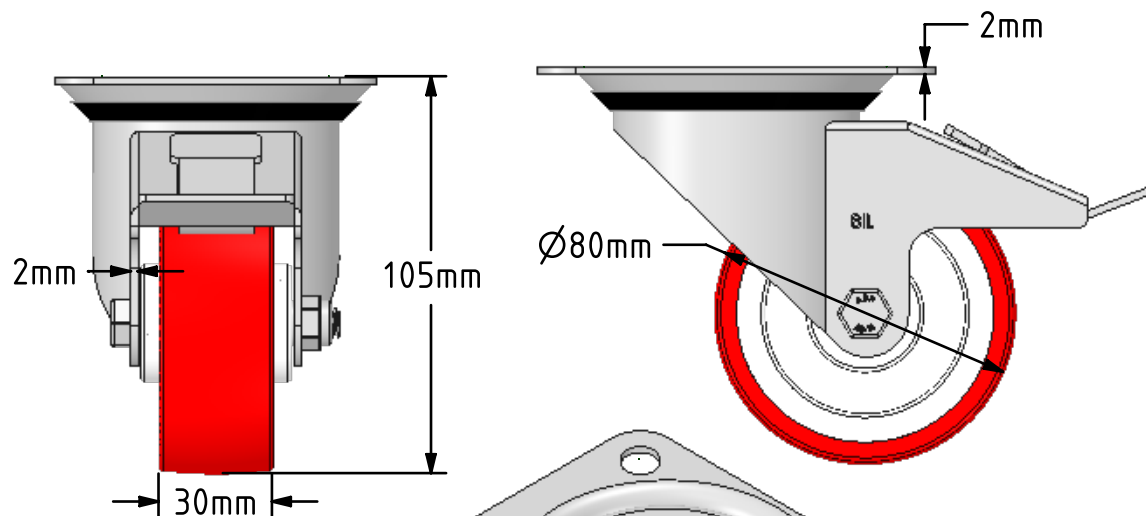
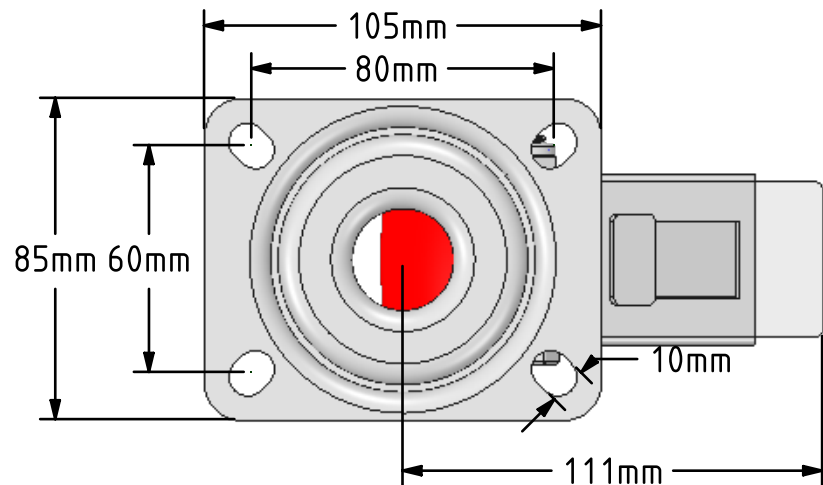


DRAWING DISCLAIMER
 COPYRIGHT OF THIS DRAWING IS RESERVED BY BIL GROUP LTD. IT IS ISSUED ON CONDITION THAT IT IS NOT REPRODUCED, COPIED, OR DISCLOSED TO A THIRD PARTY EITHER WHOLLY OR IN PART WITHOUT THE CONSENT IN WRITING OF BIL GROUP LTD.



Description:
 SSMM80NPBSWB

Grade 304 Pressed stainless steel swivel castor with top plate fixing fitted with red polyurethane tyre on white nylon centred wheel with roller bearing and total lock brake. Wheel diameter 80mm, tread width 30mm, overall height 105mm, top plate 105mm x 85mm, hole centres 80mm x 60mm. Load capacity 150kg.



	NAME	DATE
DRAWN	Matt	19/07/18
APPROVED BY	Tim W	19/07/18
SCALE	1:2	19/07/18
WEIGHT	0.749kg	19/07/18

UNLESS OTHERWISE SPECIFIED DIMENSIONS ARE IN MILLIMETRES

Unspecified Tolerances
 Machining ± 0.25mm
 Fabrication ± 1mm



BIL Group Ltd, Porte Marsh Road, Calne
 Wiltshire, SN11 9BW, United Kingdom
 Tel +44 (0)1249 822 222 Fax: +44 (0)1249 822 300
 www.bilgroup.co.uk

TITLE

SSMM80NPBSWB

SIZE A4

DWG NO. BILCW03SSMM80NPBSWB_01

REV 1

FILE NAME BILCW03SSMM80NPBSWB_01.PDF SHEET 1 OF 1