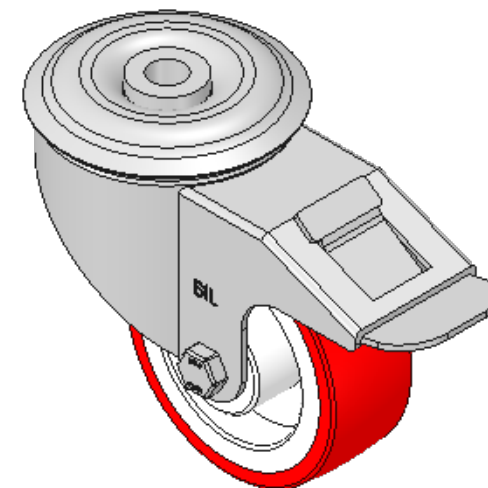
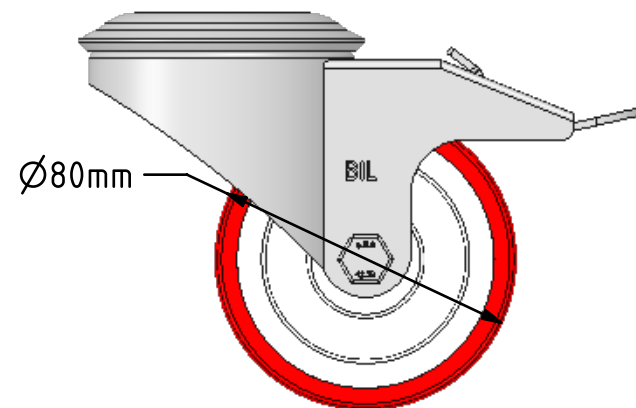
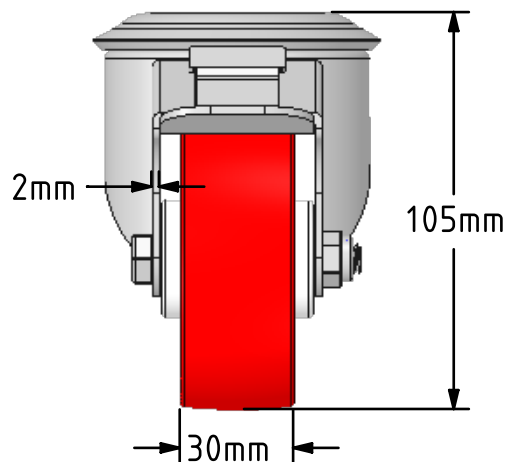
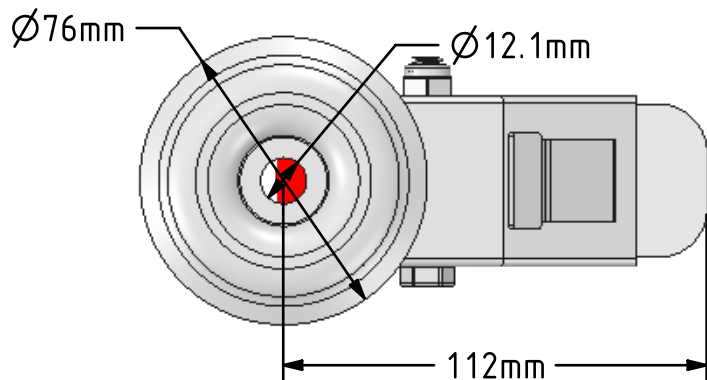



DRAWING DISCLAIMER  
 COPYRIGHT OF THIS DRAWING IS RESERVED BY BIL GROUP LTD. IT IS ISSUED ON CONDITION THAT IT IS NOT REPRODUCED, COPIED, OR DISCLOSED TO A THIRD PARTY EITHER WHOLLY OR IN PART WITHOUT THE CONSENT IN WRITING OF BIL GROUP LTD.



Description:  
 SSMM80NPBBH12SWB

Grade 304 Pressed steel swivel castor with a 12mm bolt hole fixing fitted with a red polyurethane tyre on white nylon centred wheel with a roller bearing and total lock brake. Wheel diameter 80mm, tread width 30mm, overall height 105mm. Load capacity 150kg.



	NAME	DATE	 BIL Group Ltd, Porte Marsh Road, Calne Wiltshire, SN11 9BW, United Kingdom Tel +44 (0)1249 822 222 Fax: +44 (0)1249 822 300 www.bilgroup.co.uk	
DRAWN	Matt	12/07/18		
APPROVED BY	Tim W	12/07/18		
SCALE	1:2	12/07/18		
WEIGHT	0.733kg	12/07/18	TITLE	
UNLESS OTHERWISE SPECIFIED DIMENSIONS ARE IN MILLIMETRES			SSMM80NPBBH12SWB	
Unspecified Tolerances Machining ± 0.25mm Fabrication ± 1mm			SIZE A4	DWG NO. BILCW03SSMM80NPBBH12SWB_01
			REV 1	FILE NAME BILCW03SSMM80NPBBH12SWB_01.PDF SHEET 1 OF 1