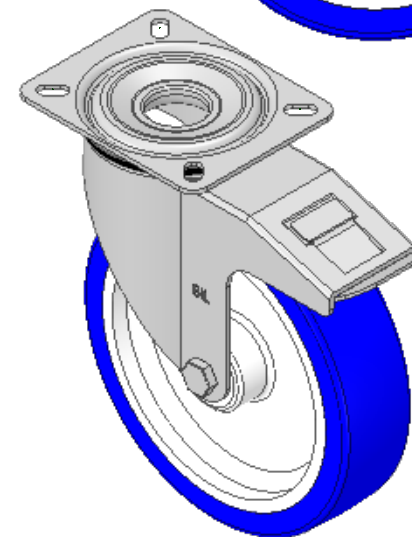
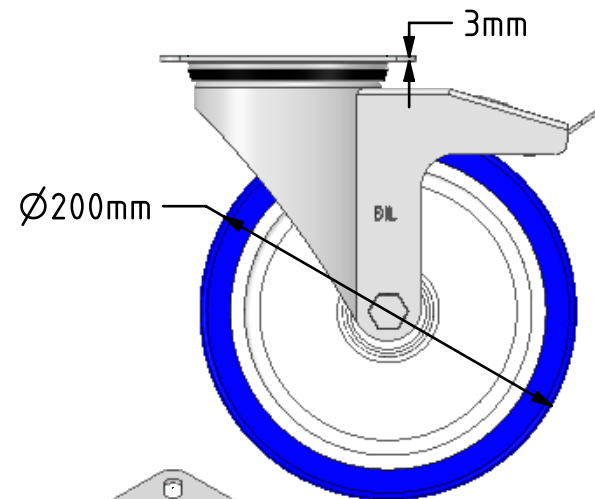
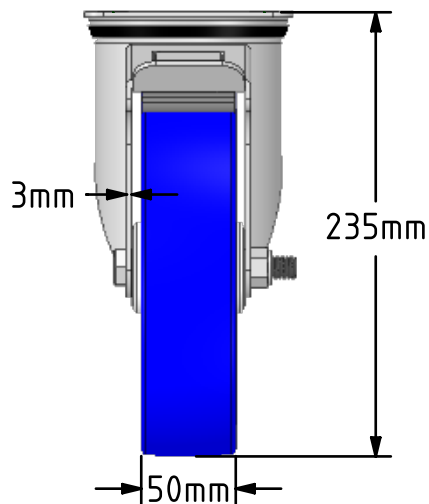
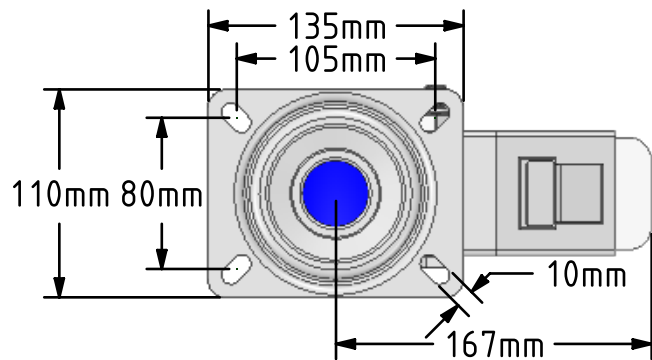


**DRAWING DISCLAIMER**  
 COPYRIGHT OF THIS DRAWING IS RESERVED BY BIL GROUP LTD. IT IS ISSUED ON CONDITION THAT IT IS NOT REPRODUCED, COPIED, OR DISCLOSED TO A THIRD PARTY EITHER WHOLLY OR IN PART WITHOUT THE CONSENT IN WRITING OF BIL GROUP LTD.



**Description:**  
 SSMM200ENPBSWB

Grade 304 Pressed stainless steel swivel castor with a top plate fitted with a 82 shore A blue polyurethane tyre on white nylon centred wheel with roller bearing bore and a total lock brake, 200mm wheel diameter, 50mm tread width, 235mm overall height, 135 x 110mm top plate, 105 x 80mm bolt holes, with a load capacity of 400kgs.



	NAME	DATE
DRAWN	Matt	06/03/19
APPROVED BY	Tim W	06/03/19
SCALE	1:4	06/03/19
WEIGHT	2.791kg	06/03/19

**BIL** Group Ltd, Porte Marsh Road, Calne  
 Wiltshire, SN11 9BW, United Kingdom  
 Tel +44 (0)1249 822 222 Fax: +44 (0)1249 822 300  
 www.bilgroup.co.uk

TITLE		REV
SSMM200ENPBSWB		2
SIZE	DWG NO.	FILE NAME
A4	BILCW03SSMM200ENPBSWB_02	BILCW03SSMM200ENPBSWB_02.PDF SHEET 1 OF 1

UNLESS OTHERWISE SPECIFIED DIMENSIONS ARE IN MILLIMETRES

Unspecified Tolerances  
 Machining ± 0.25mm  
 Fabrication ± 1mm