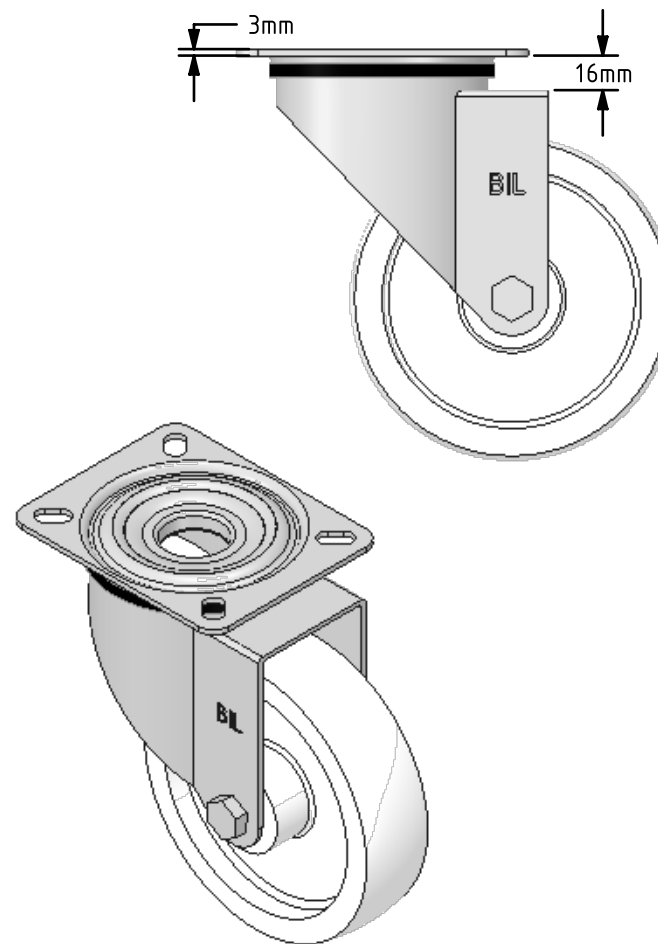
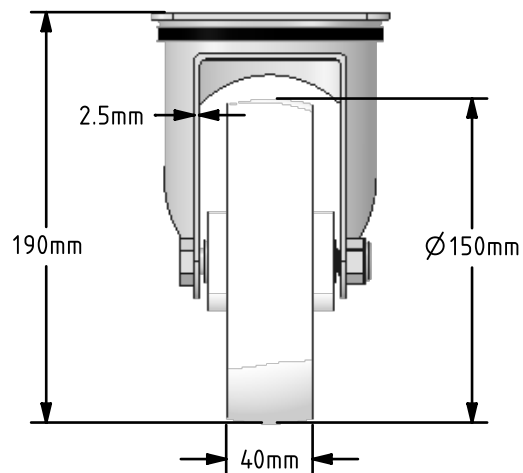
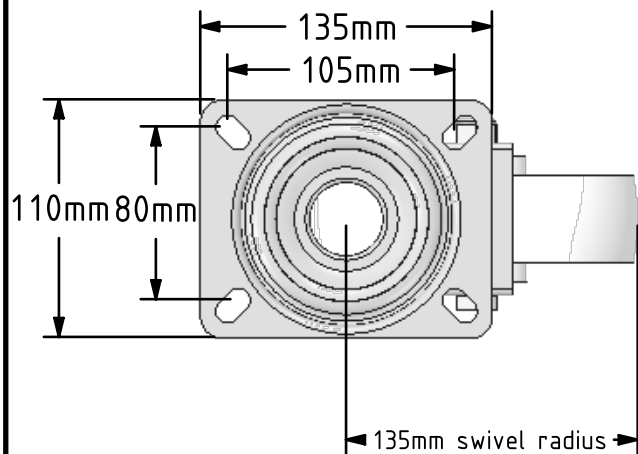
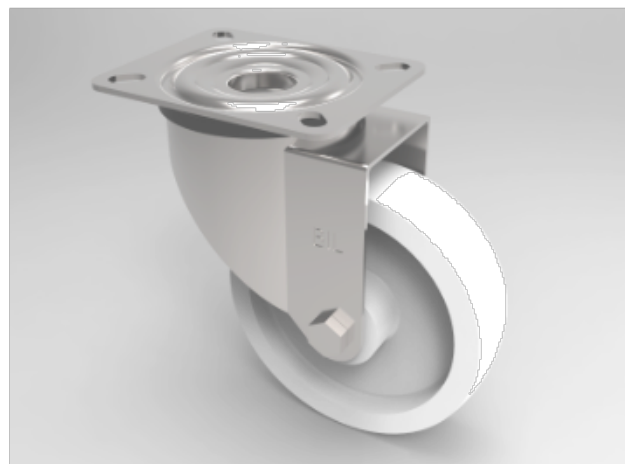



DRAWING DISCLAIMER
 COPYRIGHT OF THIS DRAWING IS RESERVED BY BIL GROUP LTD. IT IS ISSUED ON CONDITION THAT IT IS NOT REPRODUCED, COPIED, OR DISCLOSED TO A THIRD PARTY EITHER WHOLLY OR IN PART WITHOUT THE CONSENT IN WRITING OF BIL GROUP LTD.



Description:
 SSMM150NY

Grade 304 Pressed stainless steel swivel castor with a top plate fixing fitted with a white nylon wheel with a plain bearing. Wheel diameter 150mm, tread width 40mm, overall height 190mm, top plate 135mm x 110mm, hole centres 105mm x 80. Load capacity 350kg.



	NAME	DATE	 BIL Group Ltd, Porte Marsh Road, Calne Wiltshire, SN11 9BW, United Kingdom Tel +44 (0)1249 822 222 Fax: +44 (0)1249 822 300 www.bilgroup.eu	
DRAWN	Matt	01/03/16	TITLE <h2 style="text-align: center;">SSMM150NY</h2>	
APPROVED BY	Chris	01/03/16		
SCALE	2:7	01/03/16		
WEIGHT	1.4kg	01/03/16		
UNLESS OTHERWISE SPECIFIED DIMENSIONS ARE IN MILLIMETRES Unspecified Tolerances Machining ± 0.25mm Fabrication ± 1mm			SIZE A4	DWG NO. BILCW03SSMM150NY_01
			REV 1	FILE NAME BILCW03SSMM150NY_01.PDF
			SHEET 1 OF 1	