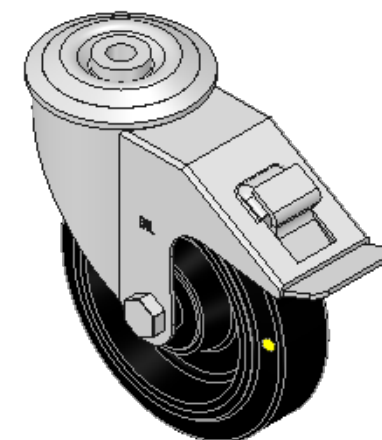
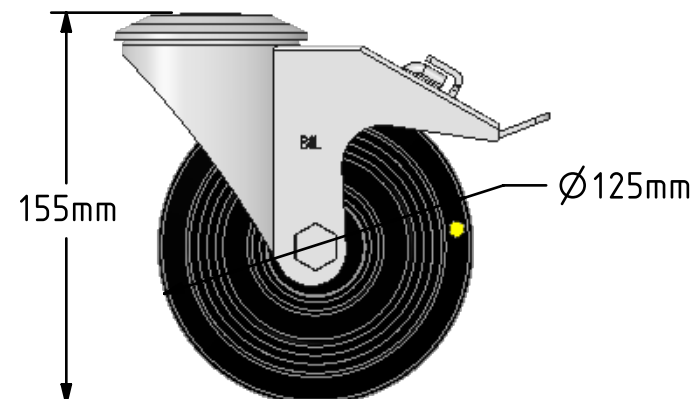
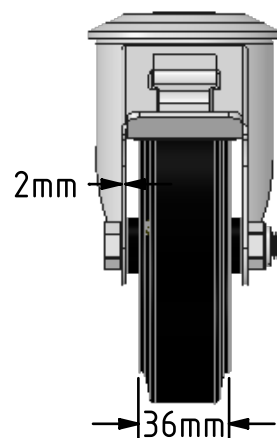
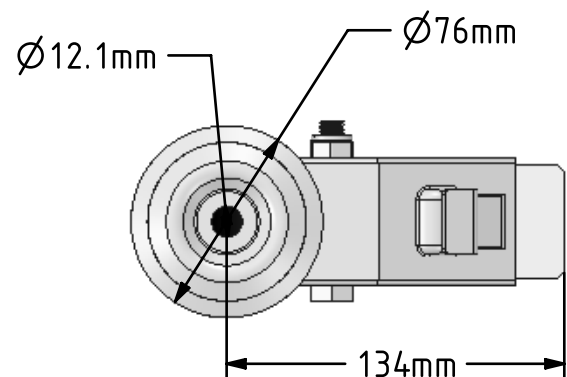


DRAWING DISCLAIMER


COPYRIGHT OF THIS DRAWING IS RESERVED BY BIL GROUP LTD. IT IS ISSUED ON CONDITION THAT IT IS NOT REPRODUCED, COPIED, OR DISCLOSED TO A THIRD PARTY EITHER WHOLLY OR IN PART WITHOUT THE CONSENT IN WRITING OF BIL GROUP LTD.

**Description:**

SSMM125RNBJECBH12SWB

Grade 304 Stainless steel swivel castor with a bolt hole fixing fitted with a 65 shore A black elastic electrically conductive rubber wheel on a black nylon centre with ball bearings (Not stainless steel) with total lock brake. Wheel diameter 125mm, tread width 36mm, overall height 155mm, bolt hole 12mm. Load capacity 200Kg. Conductivity range is 10^3 ohm to 10^4 ohm



	NAME	DATE	 BIL Group Ltd, Porte Marsh Road, Calne Wiltshire, SN11 9BW, United Kingdom Tel +44 (0)1249 822 222 Fax: +44 (0)1249 822 300 www.bilgroup.co.uk	
DRAWN	Matt	31/07/17		
APPROVED BY	Chris	31/07/17		
SCALE	1:3	31/07/17		
WEIGHT	1.099kg	31/07/17		
UNLESS OTHERWISE SPECIFIED DIMENSIONS ARE IN MILLIMETRES			TITLE	
Unspecified Tolerances Machining $\pm 0.25\text{mm}$ Fabrication $\pm 1\text{mm}$			SSMM125RNBJECBH12SWB	
			SIZE A4	REV 1
			FILE NAME BILCW03SSMM125RNBJECBH12SWB_01.PDF	SHEET 1 OF 1