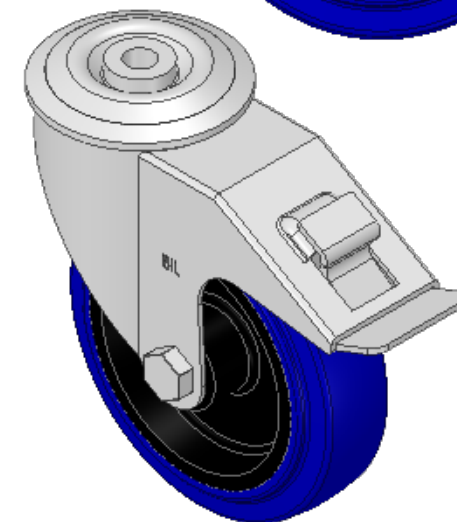
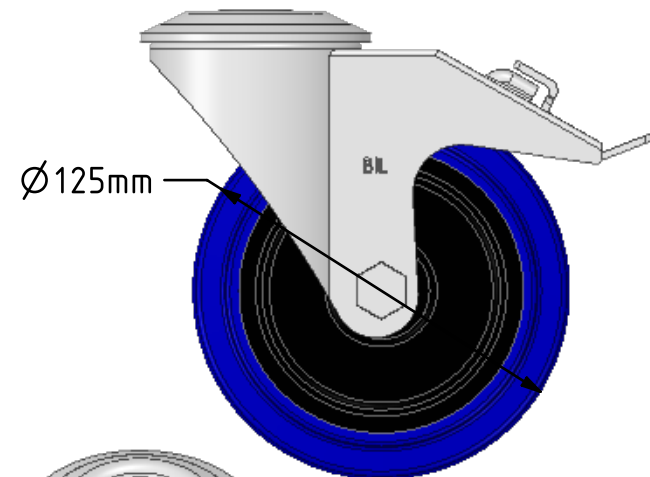
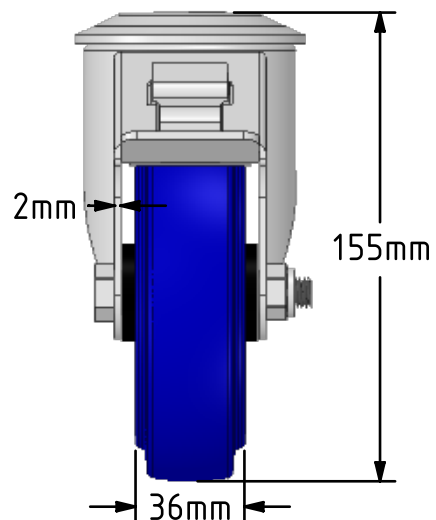
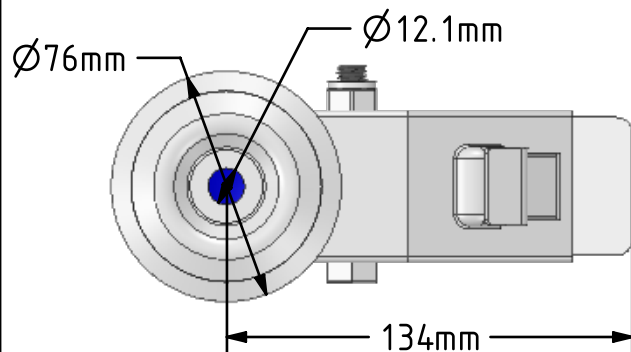
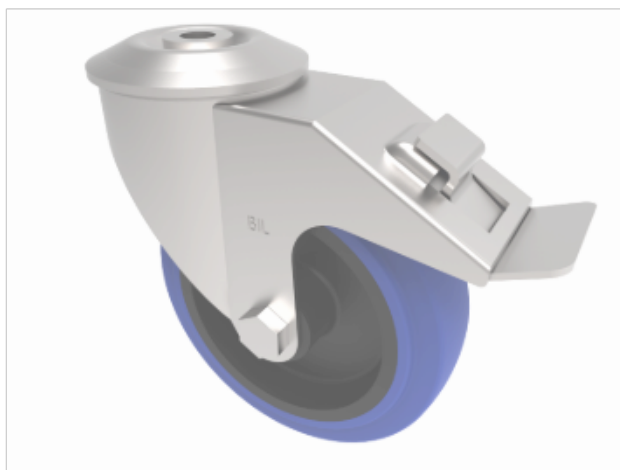


DRAWING DISCLAIMER
 COPYRIGHT OF THIS DRAWING IS RESERVED BY BIL GROUP LTD. IT IS ISSUED ON CONDITION THAT IT IS NOT REPRODUCED, COPIED, OR DISCLOSED TO A THIRD PARTY EITHER WHOLLY OR IN PART WITHOUT THE CONSENT IN WRITING OF BIL GROUP LTD.



Description:
 SSMM125RNBH12SWB

Grade 304 Pressed stainless steel swivel castor with a 12mm bolt hole fixing fitted with a blue 75 shore A elastic rubber tyre on black nylon wheel with a plain bearing and total lock brake. Wheel diameter 125mm, tread width 36mm, overall height 155mm, Load capacity 200kg.



	NAME	DATE
DRAWN	Matt	20/02/19
APPROVED BY	Tim W	20/02/19
SCALE	2:5	20/02/19
WEIGHT	1.103kg	20/02/19



BIL Group Ltd, Porte Marsh Road, Calne
 Wiltshire, SN11 9BW, United Kingdom
 Tel +44 (0)1249 822 222 Fax: +44 (0)1249 822 300
 www.bilgroup.co.uk

TITLE

SSMM125RNBH12SWB

UNLESS OTHERWISE SPECIFIED DIMENSIONS ARE IN MILLIMETRES

Unspecified Tolerances
 Machining ± 0.25mm
 Fabrication ± 1mm

SIZE	DWG NO.	REV
A4	BILCW03SSMM125RNBH12SWB_01	1

FILE NAME BILCW03SSMM125RNBH12SWB_01.PDF SHEET 1 OF 1