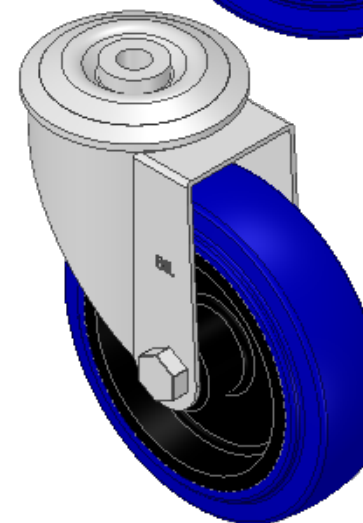
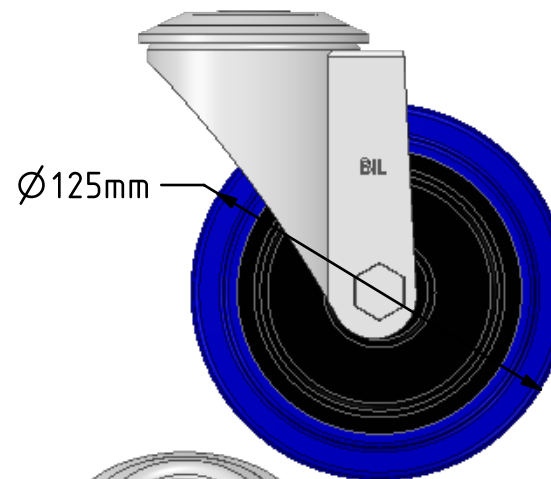
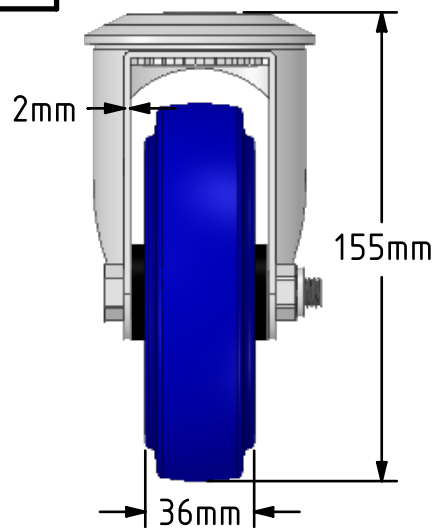
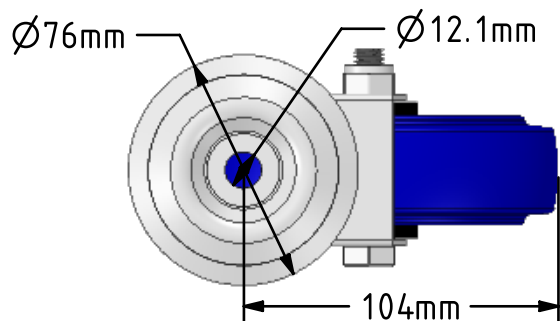
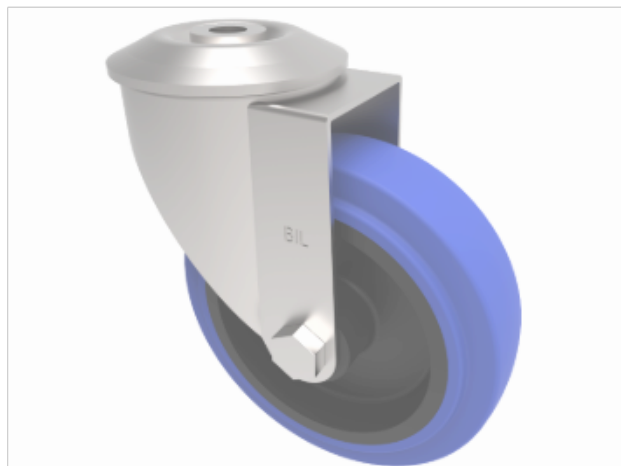



DRAWING DISCLAIMER
 COPYRIGHT OF THIS DRAWING IS RESERVED BY BIL GROUP LTD. IT IS ISSUED ON CONDITION THAT IT IS NOT REPRODUCED, COPIED, OR DISCLOSED TO A THIRD PARTY EITHER WHOLLY OR IN PART WITHOUT THE CONSENT IN WRITING OF BIL GROUP LTD.



Description:
 SSMM125RNBH12

Grade 304 Pressed stainless steel swivel castor with a 12mm bolt hole fixing fitted with a blue 75 shore A elastic rubber tyre on black nylon wheel with a plain bearing. Wheel diameter 125mm, tread width 36mm, overall height 155mm, Load capacity 200kg.



	NAME	DATE	BIL Group Ltd, Porte Marsh Road, Calne Wiltshire, SN11 9BW, United Kingdom Tel +44 (0)1249 822 222 Fax: +44 (0)1249 822 300 www.bilgroup.co.uk	
DRAWN	Matt	20/02/19		
APPROVED BY	Tim W	20/02/19		
SCALE	2:5	20/02/19		
WEIGHT	0.924kg	20/02/19		
UNLESS OTHERWISE SPECIFIED DIMENSIONS ARE IN MILLIMETRES			TITLE	
Unspecified Tolerances Machining ± 0.25mm Fabrication ± 1mm			SIZE A4	DWG NO. BILCW03SSMM125RNBH12_01
			REV 1	
			FILE NAME	BILCW03SSMM125RNBH12_01.PDF SHEET 1 OF 1