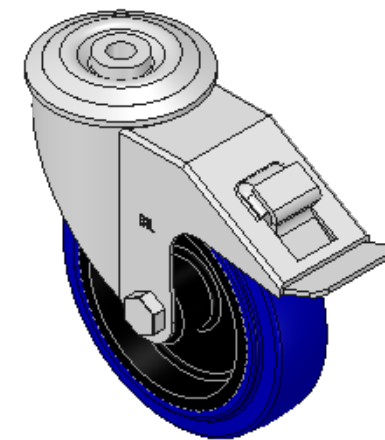
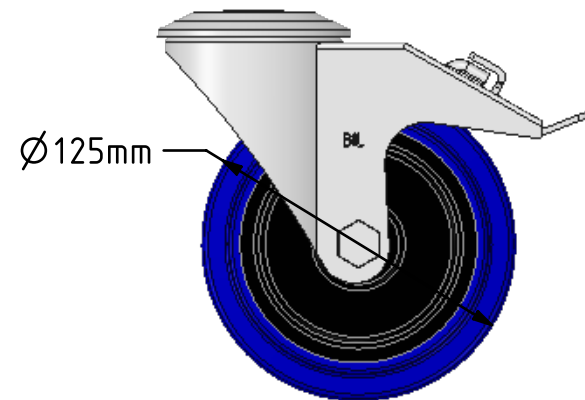
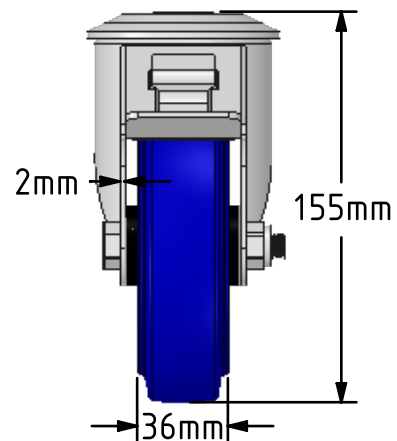
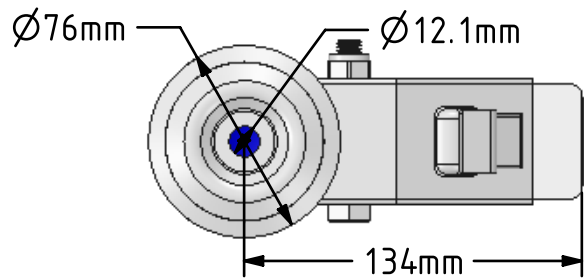
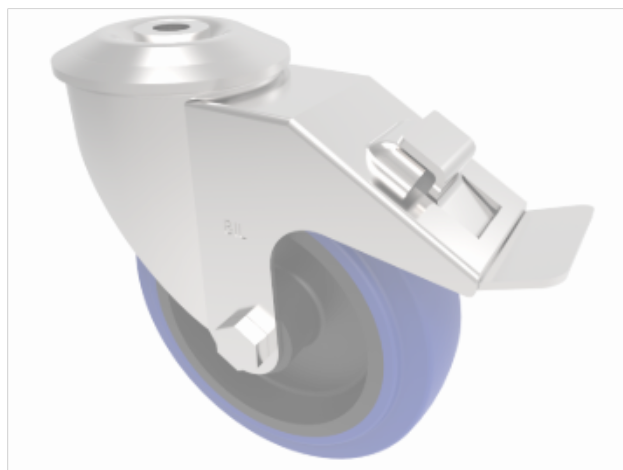



DRAWING DISCLAIMER  
 COPYRIGHT OF THIS DRAWING IS RESERVED BY BIL GROUP LTD. IT IS ISSUED ON CONDITION THAT IT IS NOT REPRODUCED, COPIED, OR DISCLOSED TO A THIRD PARTY EITHER WHOLLY OR IN PART WITHOUT THE CONSENT IN WRITING OF BIL GROUP LTD.



Description:  
 SSMM125RNBBH12SWB

Grade 304 Pressed stainless steel swivel castor with a 12mm bolt hole fitted with a blue 75 shore A elastic rubber tyre on black nylon wheel with a roller bearing and total lock brake. Wheel diameter 125mm, tread width 36mm, overall height 155mm, Load capacity 200kg.



	NAME	DATE	 BIL Group Ltd, Porte Marsh Road, Calne Wiltshire, SN11 9BW, United Kingdom Tel +44 (0)1249 822 222 Fax: +44 (0)1249 822 300 www.bilgroup.co.uk
DRAWN	Matt	25/07/18	
APPROVED BY	Tim W	25/07/18	
SCALE	1:3	25/07/18	
WEIGHT	1.143kg	25/07/18	
UNLESS OTHERWISE SPECIFIED DIMENSIONS ARE IN MILLIMETRES  Unspecified Tolerances Machining ± 0.25mm Fabrication ± 1mm			TITLE <b>SSMM125RNBBH12SWB</b>
SIZE	DWG NO.	REV	
A4	BILCW03SSMM125RNBBH12SWB__02	2	
FILE NAME BILCW03SSMM125RNBBH12SWB__02.PDF SHEET 1 OF 1			