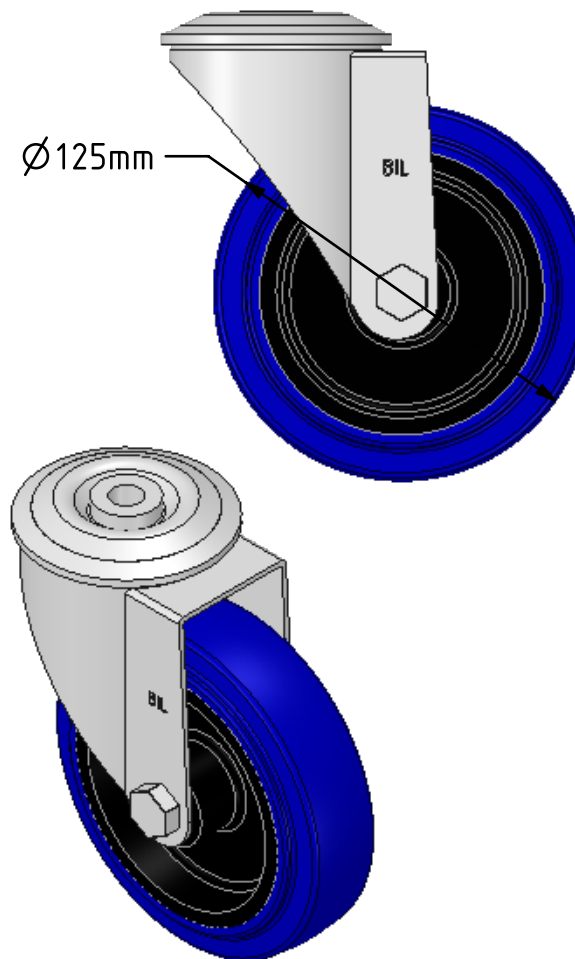
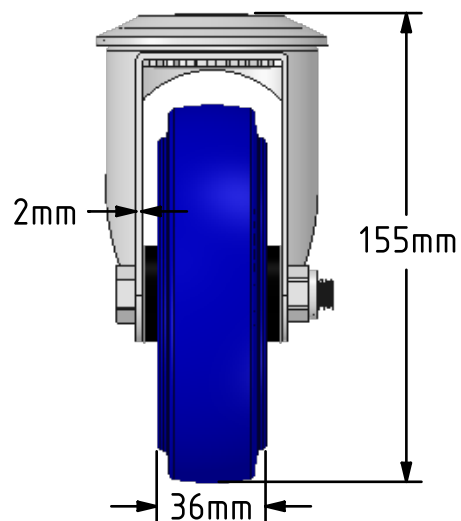
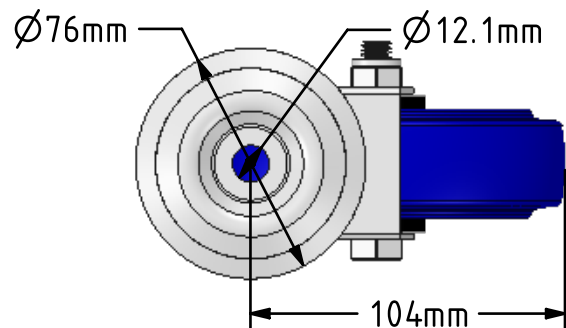


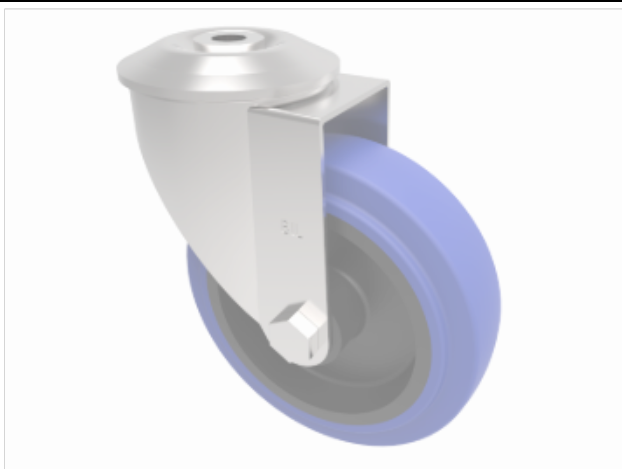
DRAWING DISCLAIMER

COPYRIGHT OF THIS DRAWING IS RESERVED BY BIL GROUP LTD. IT IS ISSUED ON CONDITION THAT IT IS NOT REPRODUCED, COPIED, OR DISCLOSED TO A THIRD PARTY EITHER WHOLLY OR IN PART WITHOUT THE CONSENT IN WRITING OF BIL GROUP LTD.

**Description:**

SSMM125RNBBH12

Grade 304 Pressed stainless steel swivel castor with a 12mm bolt hole fixing fitted with a blue 75 shore A elastic rubber tyre on black nylon wheel with a roller bearing. Wheel diameter 125mm, tread width 36mm, overall height 155mm, Load capacity 200kg.



	NAME	DATE
DRAWN	Matt	20/07/18
APPROVED BY	Chris	20/07/18
SCALE	2:5	20/07/18
WEIGHT	0.964kg	20/07/18

UNLESS OTHERWISE SPECIFIED DIMENSIONS ARE IN MILLIMETRES

Unspecified Tolerances
Machining $\pm 0.25\text{mm}$
Fabrication $\pm 1\text{mm}$



BIL Group Ltd, Porte Marsh Road, Calne
Wiltshire, SN11 9BW, United Kingdom
Tel +44 (0)1249 822 222 Fax: +44 (0)1249 822 300
www.bilgroup.co.uk

TITLE

SSMM125RNBBH12

SIZE DWG NO.

A4

BILCW03SSMM125RNBBH12__01

REV

1

FILE NAME BILCW03SSMM125RNBBH12__01.PDF

SHEET 1 OF 1