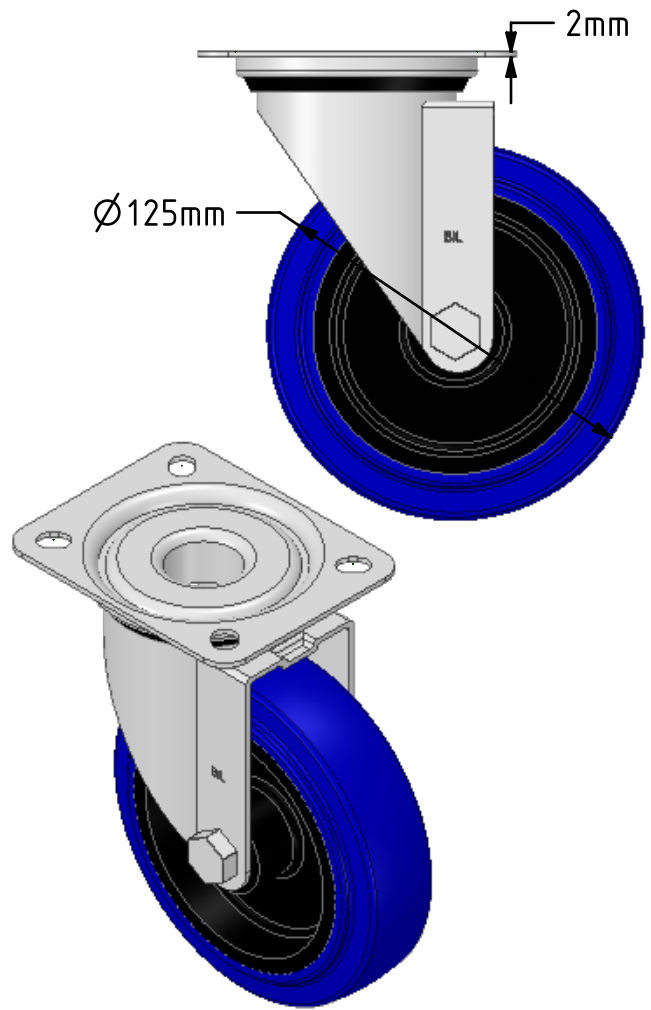
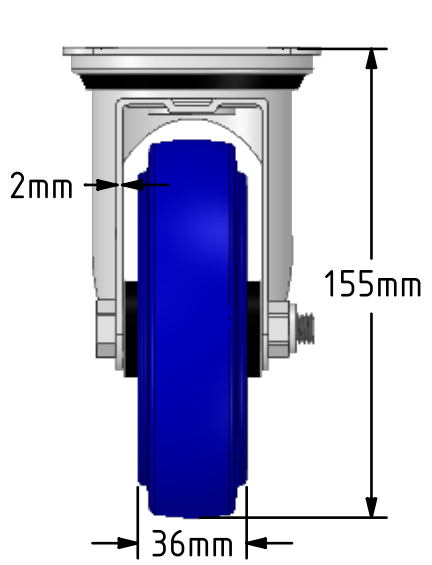
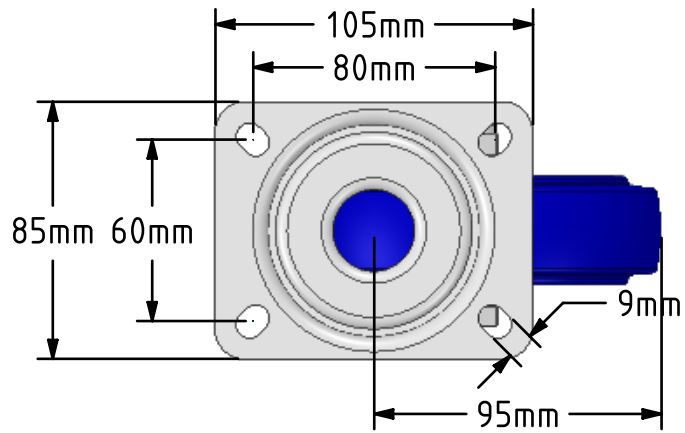
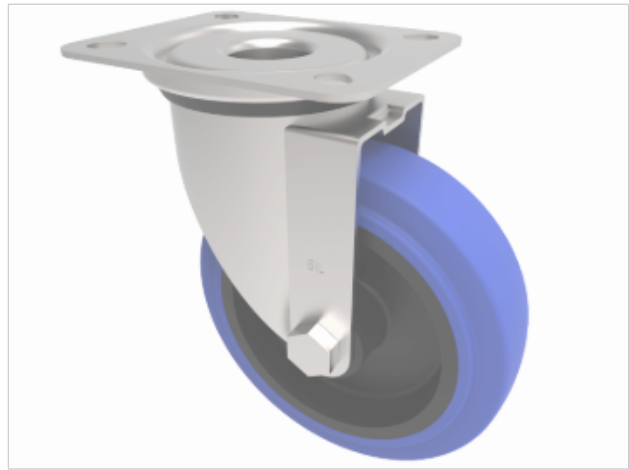


DRAWING DISCLAIMER
 COPYRIGHT OF THIS DRAWING IS RESERVED BY BIL GROUP LTD. IT IS ISSUED ON CONDITION THAT IT IS NOT REPRODUCED, COPIED, OR DISCLOSED TO A THIRD PARTY EITHER WHOLLY OR IN PART WITHOUT THE CONSENT IN WRITING OF BIL GROUP LTD.



Description:
 SSMM125RN
 Grade 304 Pressed stainless steel swivel castor with a top plate fixing fitted with a blue 75 shore A elastic rubber tyre on black nylon centred wheel with a plain bearing. Wheel diameter 125mm, tread width 36mm, overall height 155mm, top plate 105 x 85mm, hole centres 80mm x 60mm. Load capacity 200kg.



	NAME	DATE
DRAWN	Matt	20/02/19
APPROVED BY	Tim W	20/02/19
SCALE	2:5	20/02/19
WEIGHT	0.839kg	20/02/19

UNLESS OTHERWISE SPECIFIED DIMENSIONS ARE IN MILLIMETRES
 Unspecified Tolerances
 Machining ± 0.25mm
 Fabrication ± 1mm

BIL Group Ltd, Porte Marsh Road, Calne Wiltshire, SN11 9BW, United Kingdom
 Tel +44 (0)1249 822 222 Fax: +44 (0)1249 822 300
 www.bilgroup.co.uk

TITLE		SSMM125RN	
SIZE	DWG NO.	REV	
A4	BILCW03SSMM125RN_01	1	
FILE NAME	BILCW03SSMM125RN_01.PDF		SHEET 1 OF 1