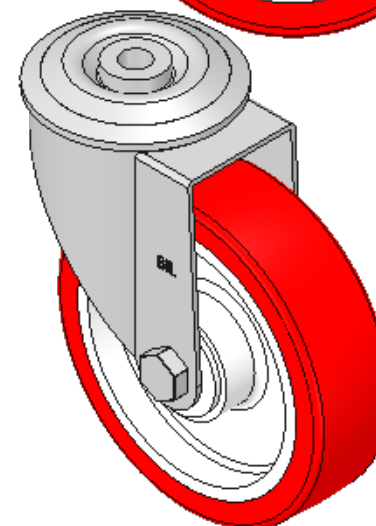
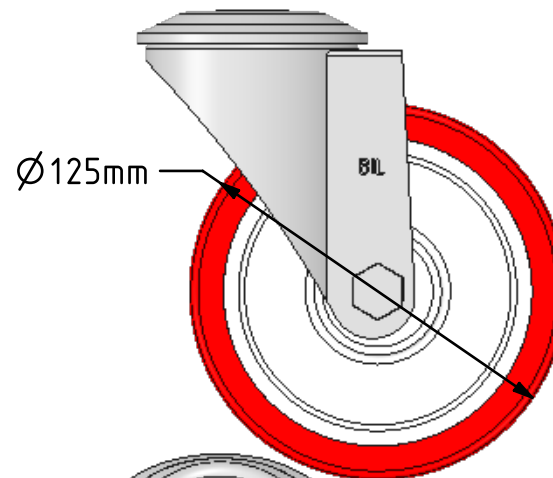
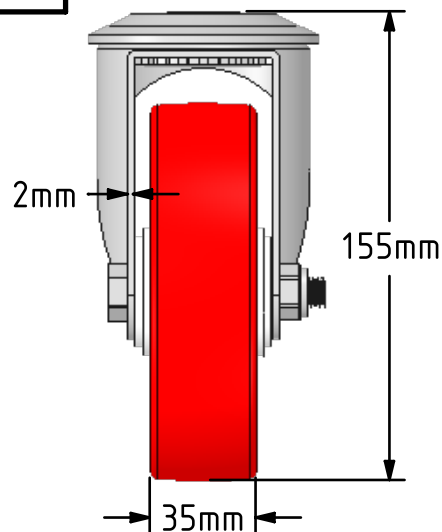
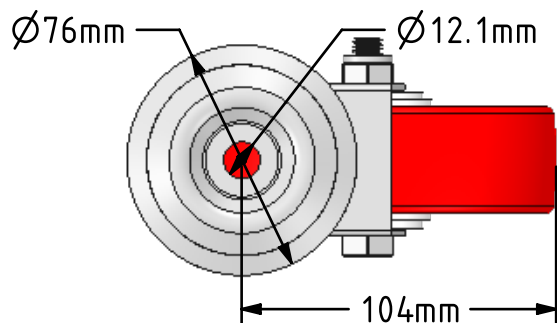


DRAWING DISCLAIMER
 COPYRIGHT OF THIS DRAWING IS RESERVED BY BIL GROUP LTD. IT IS ISSUED ON CONDITION THAT IT IS NOT REPRODUCED, COPIED, OR DISCLOSED TO A THIRD PARTY EITHER WHOLLY OR IN PART WITHOUT THE CONSENT IN WRITING OF BIL GROUP LTD.



Description:
 SSMM125NPBBH12

Grade 304 Pressed stainless steel swivel castor with a 12mm bolt hole fitted with a red polyurethane on white nylon centred wheel, with roller bearings, 125mm wheel diameter, 35mm tread width, 155mm overall height, with a load capacity of 200kgs.



	NAME	DATE
DRAWN	Matt	25/07/18
APPROVED BY	Tim W	25/07/18
SCALE	2:5	25/07/18
WEIGHT	0.946kg	25/07/18

UNLESS OTHERWISE SPECIFIED DIMENSIONS ARE IN MILLIMETRES

Unspecified Tolerances
 Machining ± 0.25mm
 Fabrication ± 1mm

	BIL Group Ltd, Porte Marsh Road, Calne Wiltshire, SN11 9BW, United Kingdom Tel +44 (0)1249 822 222 Fax: +44 (0)1249 822 300 www.bilgroup.co.uk	
	TITLE SSMM125NPBBH12	

SIZE	DWG NO.	REV
A4	BILCW03SSMM125NPBBH12_01	1
FILE NAME		SHEET 1 OF 1
BILCW03SSMM125NPBBH12_01.PDF		