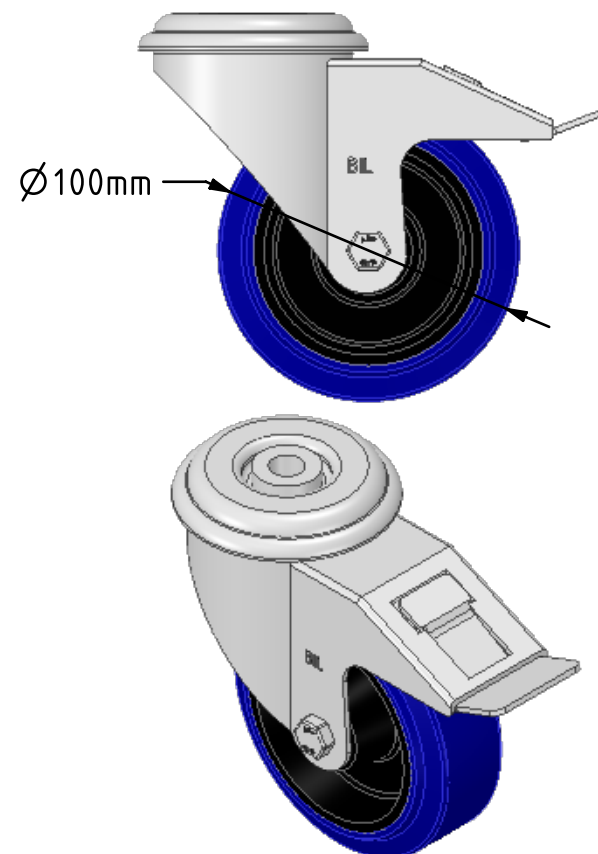
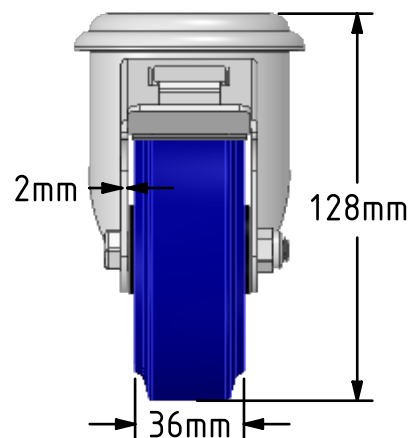
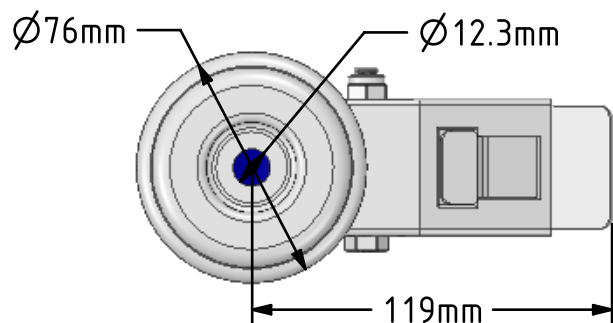


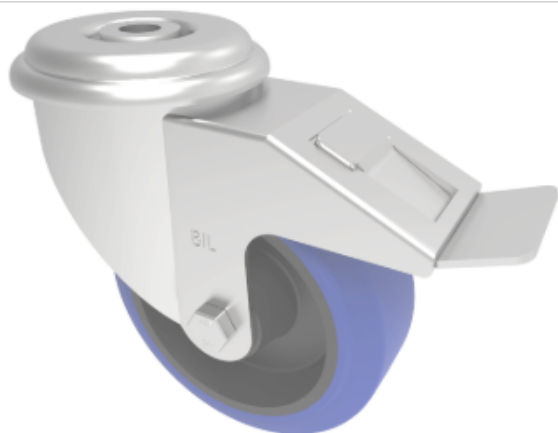
DRAWING DISCLAIMER


COPYRIGHT OF THIS DRAWING IS RESERVED BY BIL GROUP LTD. IT IS ISSUED ON CONDITION THAT IT IS NOT REPRODUCED, COPIED, OR DISCLOSED TO A THIRD PARTY EITHER WHOLLY OR IN PART WITHOUT THE CONSENT IN WRITING OF BIL GROUP LTD.

**Description:**

SSMM100SRNBBH12SWB

Grade 304 Pressed stainless-steel swivel castor with a 12mm bolt hole fixing fitted with a blue 65 shore A elastic rubber tyre on black nylon centred wheel with a roller bearing and swivel wheel brake. Wheel diameter 100mm, tread width 36mm, overall height 128mm. Load capacity 180kg..REACH compliant also PAH-Free rubber to confirm to EU-directive 2005/69/EC



	NAME	DATE	 BIL Group Ltd, Porte Marsh Road, Calne Wiltshire, SN11 9BW, United Kingdom Tel +44 (0)1249 822 222 Fax: +44 (0)1249 822 300 www.bilgroup.co.uk	
DRAWN	Matt	14/05/19		
APPROVED BY	Tim W	14/05/19		
SCALE	2:5	14/05/19		
WEIGHT	0.81kg	14/05/19		
UNLESS OTHERWISE SPECIFIED DIMENSIONS ARE IN MILLIMETRES			TITLE	
Unspecified Tolerances Machining $\pm 0.25\text{mm}$ Fabrication $\pm 1\text{mm}$			SSMM100SRNBBH12SWB	
			SIZE A4	REV 1
			FILE NAME BILCW03SSMM100SRNBBH12SWB_01.PDF SHEET 1 OF 1	