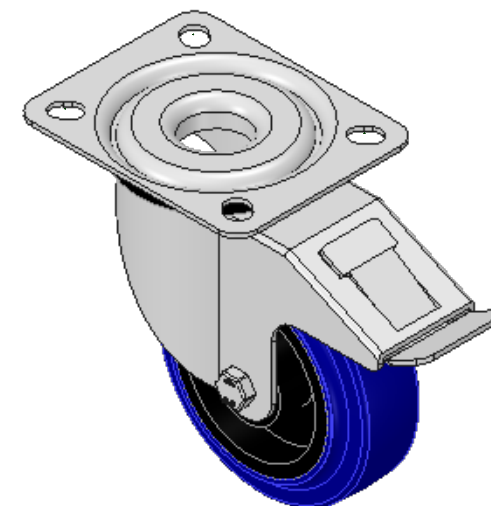
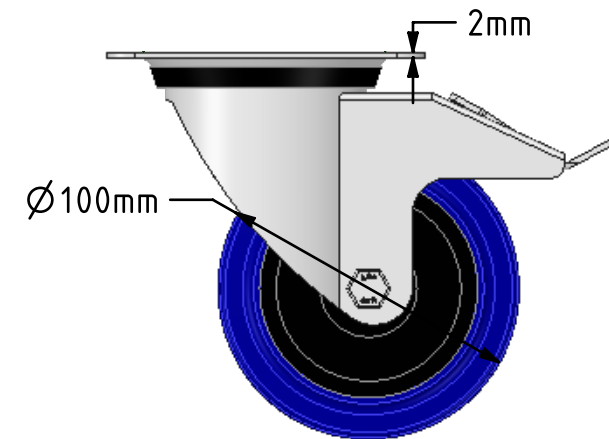
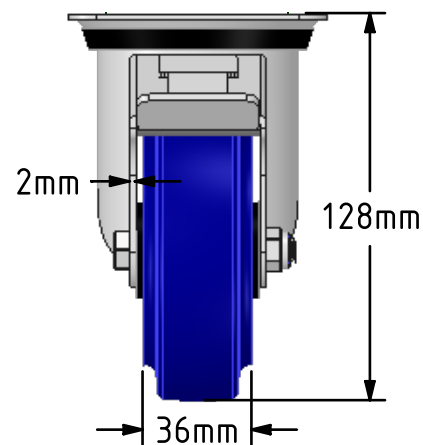
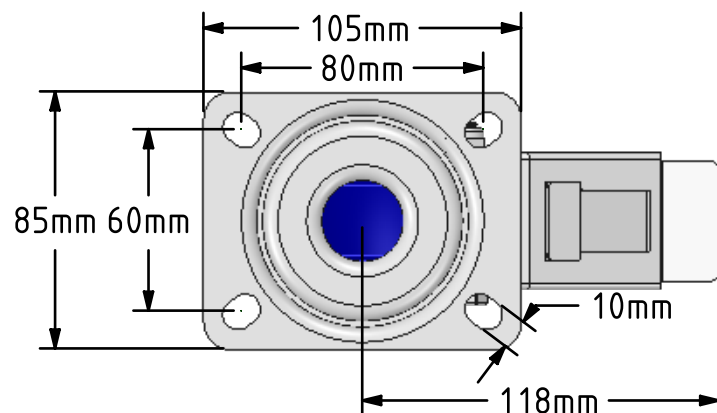


DRAWING DISCLAIMER


COPYRIGHT OF THIS DRAWING IS RESERVED BY BIL GROUP LTD. IT IS ISSUED ON CONDITION THAT IT IS NOT REPRODUCED, COPIED, OR DISCLOSED TO A THIRD PARTY EITHER WHOLLY OR IN PART WITHOUT THE CONSENT IN WRITING OF BIL GROUP LTD.

**Description:**

SSMM100RNBSWB

Grade 304 Pressed stainless steel swivel castor with a top plate fixing fitted with a blue 75 shore A elastic rubber tyre black nylon centred wheel with a roller bearing and total lock brake. Wheel diameter 100mm, tread width 36mm, overall height 128mm, top plate 105mm x 85mm, hole centres 80mm x 60mm. Load capacity 150kg



	NAME	DATE	 BIL Group Ltd, Porte Marsh Road, Calne Wiltshire, SN11 9BW, United Kingdom Tel +44 (0)1249 822 222 Fax: +44 (0)1249 822 300 www.bilgroup.co.uk		
DRAWN	Matt	24/07/18			
APPROVED BY	Tim W	24/07/18			
SCALE	2:5	24/07/18			
WEIGHT	0.823kg	24/07/18			
UNLESS OTHERWISE SPECIFIED DIMENSIONS ARE IN MILLIMETRES			TITLE		
Unspecified Tolerances Machining $\pm 0.25\text{mm}$ Fabrication $\pm 1\text{mm}$			SSMM100RNBSWB		
			SIZE A4	DWG NO. BILCW03SSMM100RNBSWB	REV 1
			FILE NAME BILCW03SSMM100RNBSWB.PDF SHEET 1 OF 1		