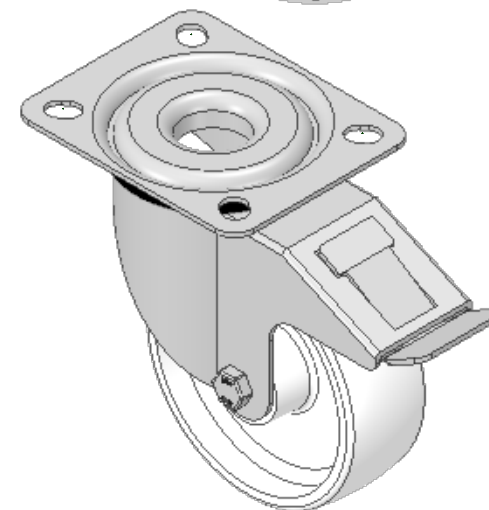
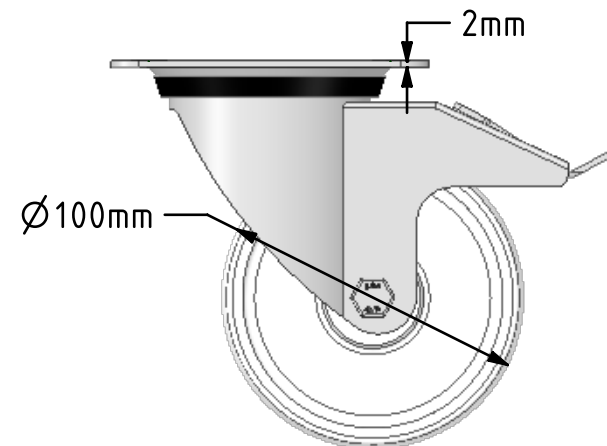
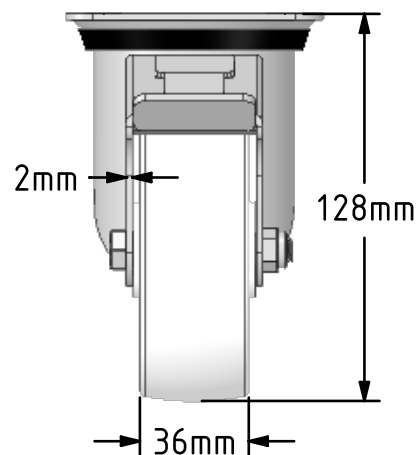
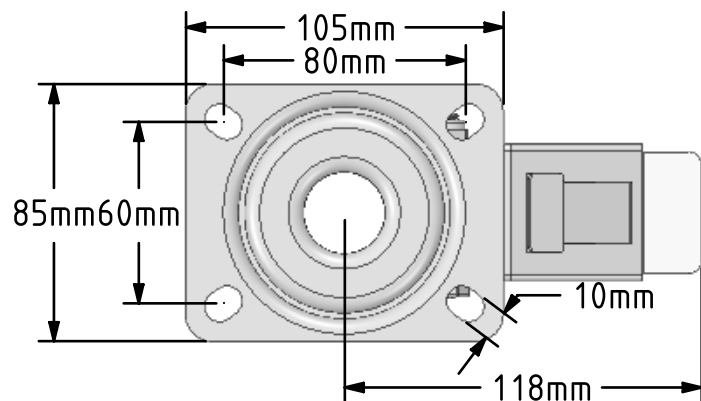


DRAWING DISCLAIMER

COPYRIGHT OF THIS DRAWING IS RESERVED BY BIL GROUP LTD. IT IS ISSUED ON CONDITION THAT IT IS NOT REPRODUCED, COPIED, OR DISCLOSED TO A THIRD PARTY EITHER WHOLLY OR IN PART WITHOUT THE CONSENT IN WRITING OF BIL GROUP LTD.

**Description:**

SSMM100PLSWB

Grade 304 Pressed stainless steel swivel braked castor with a top plate fixing fitted with a white polypropylene wheel with a plain bearing. Wheel diameter 100mm, tread width 36mm, overall height 128mm, top plate 105mm x 85mm, hole centres 80mm x 60mm. Load capacity 160kg.



	NAME	DATE
DRAWN	Matt	20/03/19
APPROVED BY	Tim W	20/03/19
SCALE	2:5	20/03/19
WEIGHT	0.691kg	20/03/19

UNLESS OTHERWISE SPECIFIED DIMENSIONS ARE IN MILLIMETRES

Unspecified Tolerances
Machining $\pm 0.25\text{mm}$
Fabrication $\pm 1\text{mm}$



BIL Group Ltd, Porte Marsh Road, Calne
Wiltshire, SN11 9BW, United Kingdom
Tel +44 (0)1249 822 222 Fax: +44 (0)1249 822 300
www.bilgroup.co.uk

TITLE

SSMM100PLSWB

SIZE DWG NO.

A4

BILCW03SSMM100PLSWB_02

REV

2

FILE NAME BILCW03SSMM100PLSWB_02.PDF

SHEET 1 OF 1