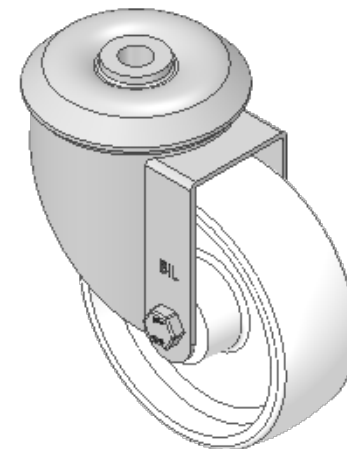
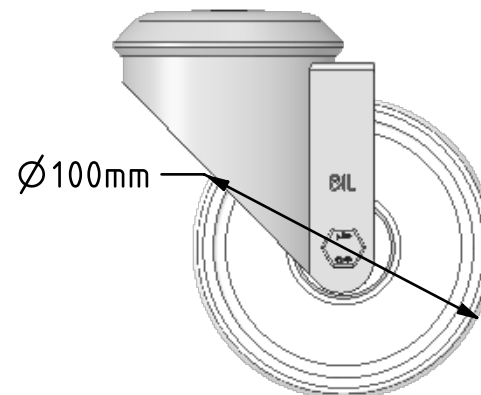
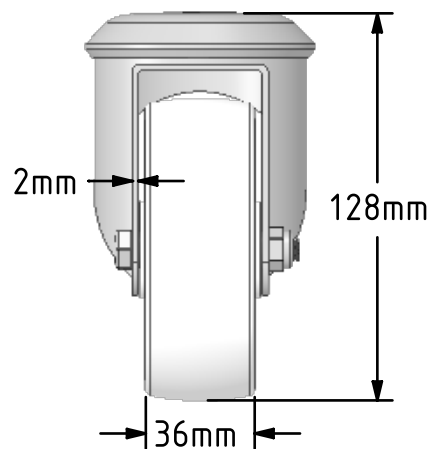
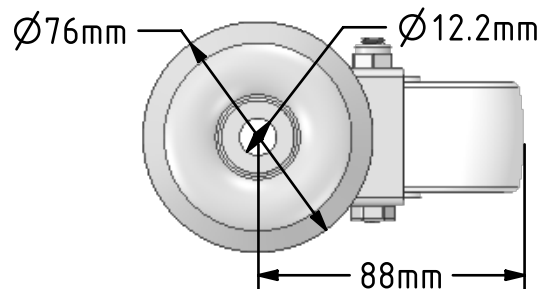



DRAWING DISCLAIMER
 COPYRIGHT OF THIS DRAWING IS RESERVED BY BIL GROUP LTD. IT IS ISSUED ON CONDITION THAT IT IS NOT REPRODUCED, COPIED, OR DISCLOSED TO A THIRD PARTY EITHER WHOLLY OR IN PART WITHOUT THE CONSENT IN WRITING OF BIL GROUP LTD.



Description:
 SSMM100PLBH12

Grade 304 Pressed stainless steel swivel castor with a 12mm bolt hole fixing, fitted with a white polypropylene wheel with plain bearing. Wheel diameter 100mm tread width 36mm overall height 128mm, Load capacity 160kg



	NAME	DATE	BIL Group Ltd, Porte Marsh Road, Calne Wiltshire, SN11 9BW, United Kingdom Tel +44 (0)1249 822 222 Fax: +44 (0)1249 822 300 www.bilgroup.co.uk	
DRAWN	Matt	20/03/19	 TITLE SSMM100PLBH12	
APPROVED BY	Tim W	20/03/19		
SCALE	2:5	20/03/19		
WEIGHT	0.613kg	20/03/19		
UNLESS OTHERWISE SPECIFIED DIMENSIONS ARE IN MILLIMETRES			SIZE	DWG NO.
Unspecified Tolerances Machining $\pm 0.25\text{mm}$ Fabrication $\pm 1\text{mm}$			A4	BILCW03SSMM100PLBH12_02
			REV	2
			FILE NAME	BILCW03SSMM100PLBH12_02.PDF SHEET 1 OF 1