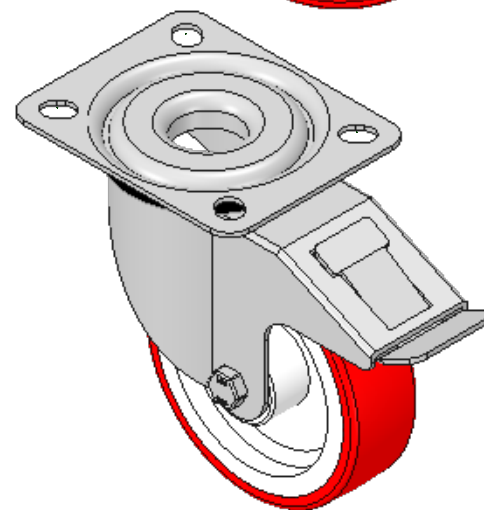
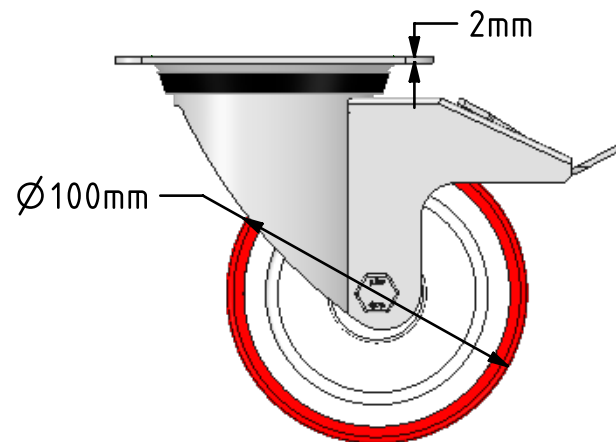
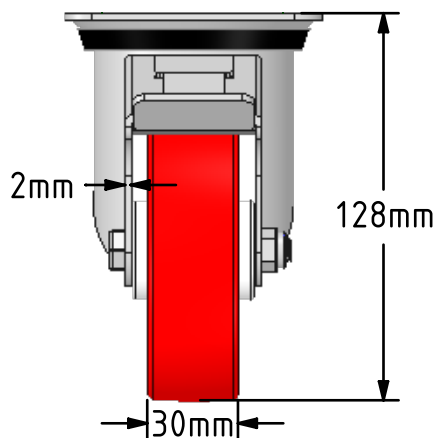
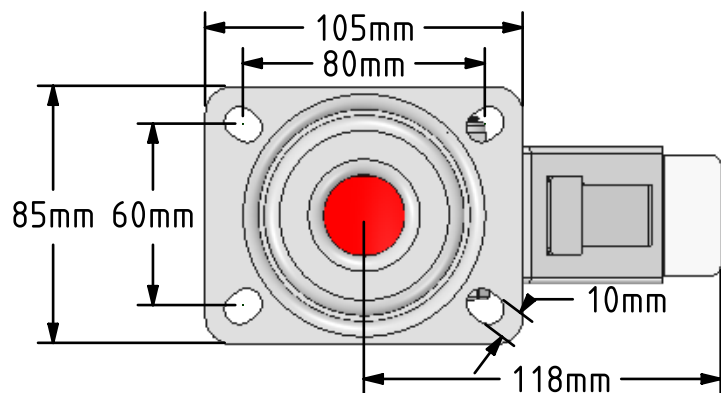



DRAWING DISCLAIMER
 COPYRIGHT OF THIS DRAWING IS RESERVED BY BIL GROUP LTD. IT IS ISSUED ON CONDITION THAT IT IS NOT REPRODUCED, COPIED, OR DISCLOSED TO A THIRD PARTY EITHER WHOLLY OR IN PART WITHOUT THE CONSENT IN WRITING OF BIL GROUP LTD.



Description:
 SSMM100NPBSWB

Grade 304 Pressed stainless steel swivel castor top plate fixing fitted with a red polyurethane tyre white nylon centred wheel with a roller bearing and total lock brake. Wheel diameter 100mm, tread width 30mm, overall height 128mm, top plate 105mm x 85mm, hole centres 80mm x 60mm. Load capacity 150kg.



	NAME	DATE	BIL Group Ltd, Porte Marsh Road, Calne Wiltshire, SN11 9BW, United Kingdom Tel +44 (0)1249 822 222 Fax: +44 (0)1249 822 300 www.bilgroup.co.uk	
DRAWN	Matt	24/07/18		
APPROVED BY	Tim W	24/07/18		
SCALE	2:5	24/07/18		
WEIGHT	0.785kg	24/07/18		
UNLESS OTHERWISE SPECIFIED DIMENSIONS ARE IN MILLIMETRES			TITLE	
Unspecified Tolerances Machining ± 0.25mm Fabrication ± 1mm			SSMM100NPBSWB	
SIZE A4		DWG NO. BILCW03SSMM100NPBSWB_01	REV 1	
FILE NAME		BILCW03SSMM100NPBSWB_01.PDF SHEET 1 OF 1		