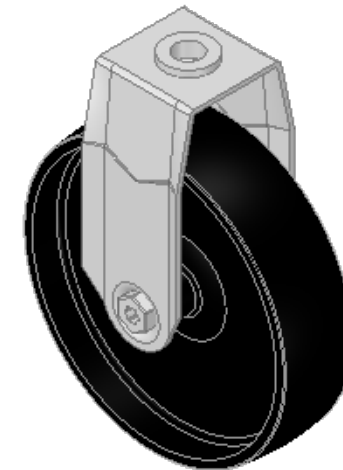
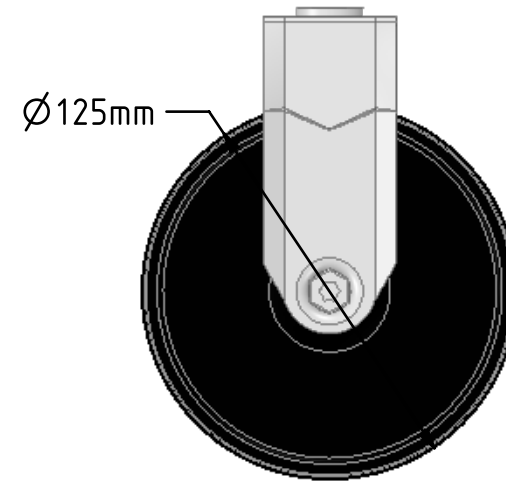
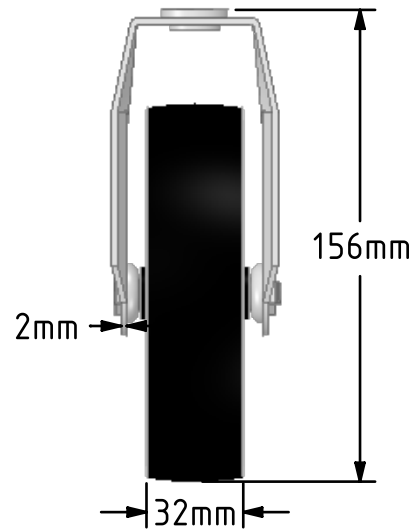
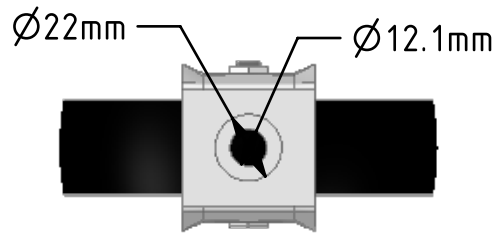


DRAWING DISCLAIMER
 COPYRIGHT OF THIS DRAWING IS RESERVED BY BIL GROUP LTD. IT IS ISSUED ON CONDITION THAT IT IS NOT REPRODUCED, COPIED, OR DISCLOSED TO A THIRD PARTY EITHER WHOLLY OR IN PART WITHOUT THE CONSENT IN WRITING OF BIL GROUP LTD.



Description:
 SSMF125PLBH12

Grade 304 Pressed stainless steel fixed castor with a 12mm bolt hole fitted with a black polypropylene wheel with plain bore. Wheel diameter 125mm, tread width 32mm, overall height 156mm, Load capacity 100kg.



| | NAME | DATE |
|-------------|---------|----------|
| DRAWN | Matt | 08/10/18 |
| APPROVED BY | Kevin | 08/10/18 |
| SCALE | 2:5 | 08/10/18 |
| WEIGHT | 0.335kg | 08/10/18 |

UNLESS OTHERWISE SPECIFIED DIMENSIONS ARE IN MILLIMETRES
 Unspecified Tolerances
 Machining ± 0.25mm
 Fabrication ± 1mm

 BIL Group Ltd, Porte Marsh Road, Calne Wiltshire, SN11 9BW, United Kingdom
 Tel +44 (0)1249 822 222 Fax: +44 (0)1249 822 300
 www.bilgroup.co.uk

TITLE
 SSMF125PLBH12

| SIZE | DWG NO. | REV |
|-----------|---|-----|
| A4 | BILCW03SSMF125PLBH12__01 | 1 |
| FILE NAME | BILCW03SSMF125PLBH12__01.PDF SHEET 1 OF 1 | |