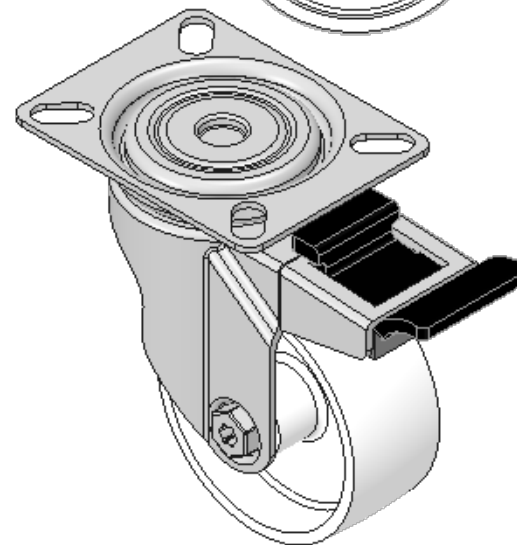
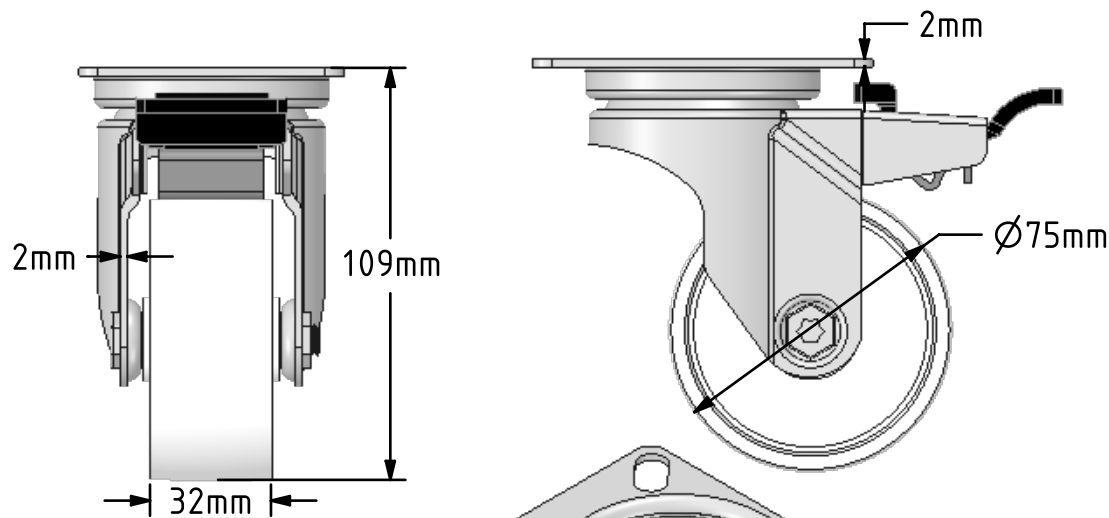
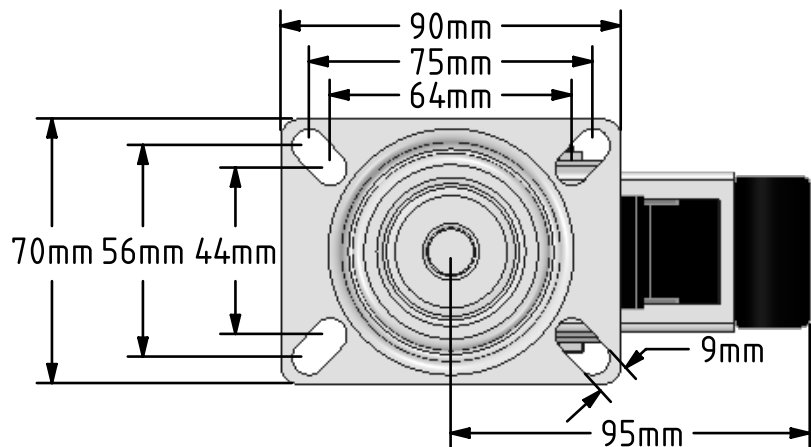


DRAWING DISCLAIMER
 COPYRIGHT OF THIS DRAWING IS RESERVED BY BIL GROUP LTD. IT IS ISSUED ON CONDITION THAT IT IS NOT REPRODUCED, COPIED, OR DISCLOSED TO A THIRD PARTY EITHER WHOLLY OR IN PART WITHOUT THE CONSENT IN WRITING OF BIL GROUP LTD.



Description:
 SSM75NYSWB

Grade 304 Pressed stainless steel swivel castor with a top plate fixing fitted with a white nylon wheel with plain bearing and a total lock brake. Wheel diameter 75mm, tread width 32mm, overall height 109mm, top plate 90mm x 70mm, hole centres 75mm x 56mm or 64mm x 44mm. Load capacity 70kg.



	NAME	DATE
DRAWN	Matt	11/01/18
APPROVED BY	Tim W	11/01/18
SCALE	1:2	11/01/18
WEIGHT	0.492kg	11/01/18

 BIL Group Ltd, Porte Marsh Road, Calne
 Wiltshire, SN11 9BW, United Kingdom
 Tel +44 (0)1249 822 222 Fax: +44 (0)1249 822 300
 www.bilgroup.co.uk

TITLE
 SSM75NYSWB

UNLESS OTHERWISE SPECIFIED DIMENSIONS ARE IN MILLIMETRES
 Unspecified Tolerances
 Machining ± 0.25mm
 Fabrication ± 1mm

SIZE	DWG NO.	REV
A4	BILCW03SSM75NYSWB_01	1
FILE NAME	BILCW03SSM75NYSWB_01.PDF	SHEET 1 OF 1