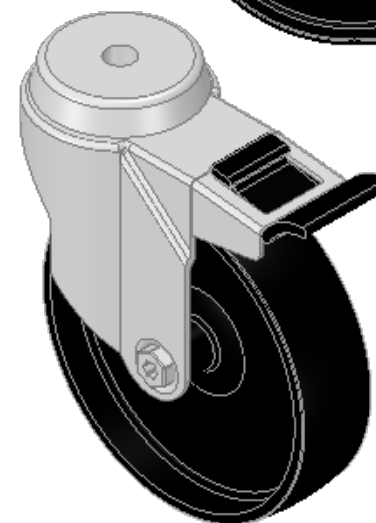
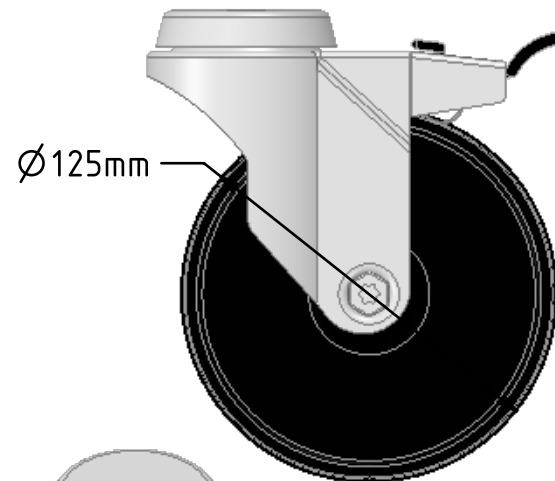
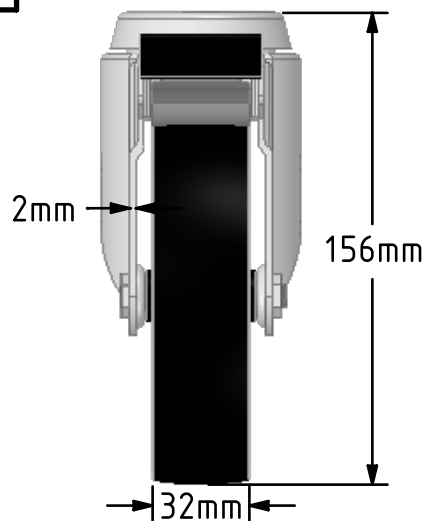
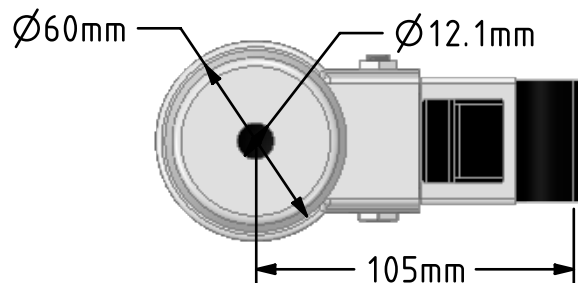



DRAWING DISCLAIMER
 COPYRIGHT OF THIS DRAWING IS RESERVED BY BIL GROUP LTD. IT IS ISSUED ON CONDITION THAT IT IS NOT REPRODUCED, COPIED, OR DISCLOSED TO A THIRD PARTY EITHER WHOLLY OR IN PART WITHOUT THE CONSENT IN WRITING OF BIL GROUP LTD.



Description:
 SSM125PLBH12SWB

Grade 304 Pressed stainless steel swivel castor with a 12mm bolt hole fitted with a black polypropylene wheel with plain bore and a total lock brake. Wheel diameter 125mm, tread width 32mm, overall height 156mm, Load capacity 100kg.



	NAME	DATE	 BIL Group Ltd, Porte Marsh Road, Calne Wiltshire, SN11 9BW, United Kingdom Tel +44 (0)1249 822 222 Fax: +44 (0)1249 822 300 www.bilgroup.co.uk
DRAWN	Matt	08/10/18	
APPROVED BY	Chris	08/10/18	
SCALE	2:5	08/10/18	
WEIGHT	0.53kg	08/10/18	TITLE
UNLESS OTHERWISE SPECIFIED DIMENSIONS ARE IN MILLIMETRES Unspecified Tolerances Machining ± 0.25mm Fabrication ± 1mm			SSM125PLBH12SWB
SIZE		DWG NO.	REV
A4		BILCW03SSM125PLBH12SWB_01	1
FILE NAME			SHEET 1 OF 1
BILCW03SSM125PLBH12SWB_01.PDF			