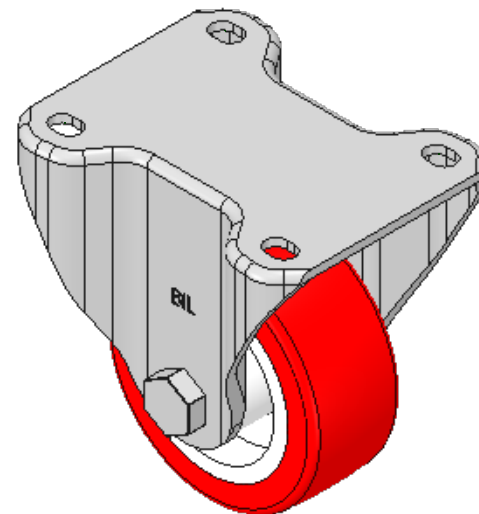
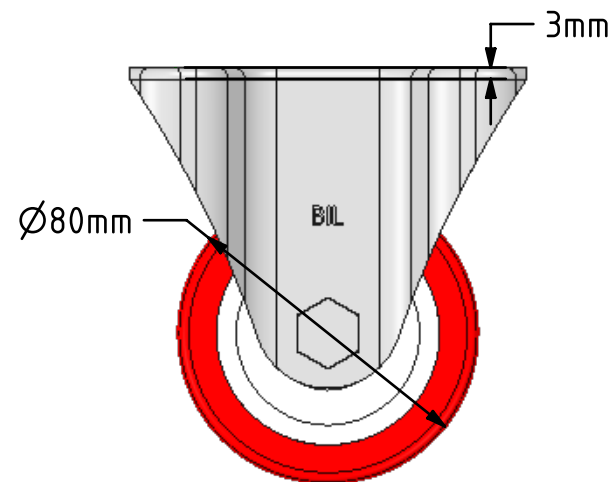
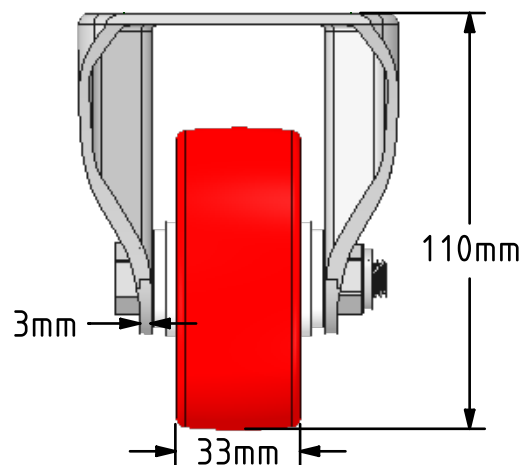
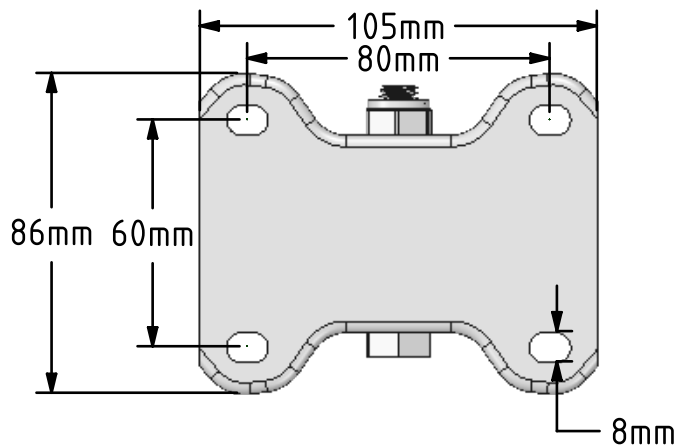



DRAWING DISCLAIMER
 COPYRIGHT OF THIS DRAWING IS RESERVED BY BIL GROUP LTD. IT IS ISSUED ON CONDITION THAT IT IS NOT REPRODUCED, COPIED, OR DISCLOSED TO A THIRD PARTY EITHER WHOLLY OR IN PART WITHOUT THE CONSENT IN WRITING OF BIL GROUP LTD.



Description:
 SSEHF80NP

Grade 304 Pressed stainless steel fixed castor with a top plate fixing fitted with a red polyurethane tyred white nylon centred wheel with a plain bearing. Wheel diameter 80mm, tread width 33mm, overall height 111mm, top plate 105mm x 86mm, hole centres 80mm x 60mm. Load capacity 210kg



	NAME	DATE	 BIL Group Ltd, Porte Marsh Road, Calne Wiltshire, SN11 9BW, United Kingdom Tel +44 (0)1249 822 222 Fax: +44 (0)1249 822 300 www.bilgroup.co.uk
DRAWN	Matt	16/03/18	
APPROVED BY	Chris	16/03/18	
SCALE	1:2	16/03/18	
WEIGHT	0.594kg	16/03/18	
UNLESS OTHERWISE SPECIFIED DIMENSIONS ARE IN MILLIMETRES Unspecified Tolerances Machining ± 0.25mm Fabrication ± 1mm			TITLE SSEHF80NP
SIZE	DWG NO.		REV
A4	BILCW03SSEHF80NP_01		1
FILE NAME	BILCW03SSEHF80NP_01.PDF		SHEET 1 OF 1