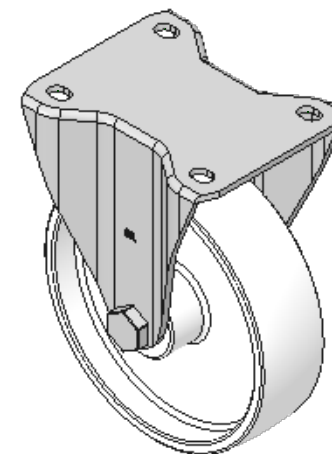
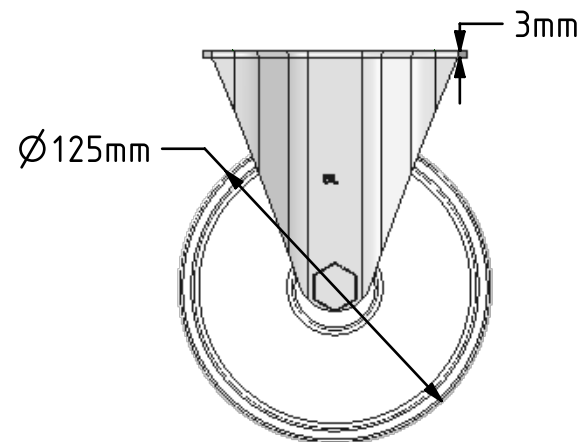
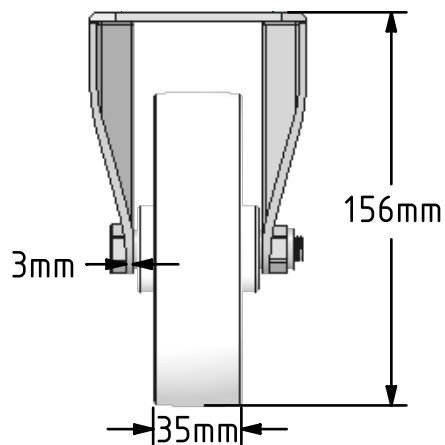
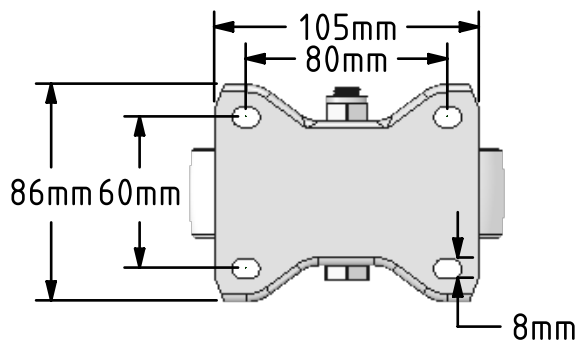


DRAWING DISCLAIMER
 COPYRIGHT OF THIS DRAWING IS RESERVED BY BIL GROUP LTD. IT IS ISSUED ON CONDITION THAT IT IS NOT REPRODUCED, COPIED, OR DISCLOSED TO A THIRD PARTY EITHER WHOLLY OR IN PART WITHOUT THE CONSENT IN WRITING OF BIL GROUP LTD.



Description:
 SSEHF125NYB

Grade 304 Pressed stainless steel fixed castor with a top plate fixing fitted with a white nylon wheel with a roller bearing. Wheel diameter 125mm, tread width 35mm, overall height 155mm, top plate 105mm x 86mm, hole centres 80mm x 60mm. Load capacity 250kg



	NAME	DATE
DRAWN	Matt	10/04/18
APPROVED BY	Tim W	10/04/18
SCALE	1:3	10/04/18
WEIGHT	0.738kg	10/04/18

 BIL Group Ltd, Porte Marsh Road, Calne
 Wiltshire, SN11 9BW, United Kingdom
 Tel +44 (0)1249 822 222 Fax: +44 (0)1249 822 300
 www.bilgroup.co.uk

TITLE		REV
SSEHF125NYB		1
SIZE	DWG NO.	
A4	BILCW03SSEHF125NYB_01	
FILE NAME	SHEET 1 OF 1	
BILCW03SSEHF125NYB_01.PDF		

UNLESS OTHERWISE SPECIFIED DIMENSIONS ARE IN MILLIMETRES

Unspecified Tolerances
 Machining ± 0.25mm
 Fabrication ± 1mm