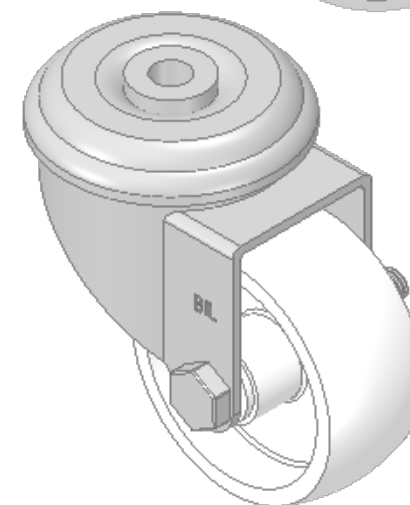
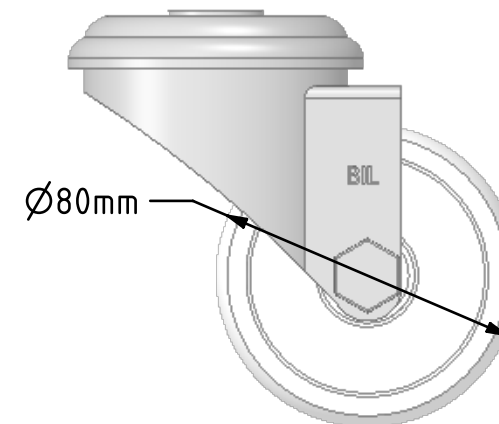
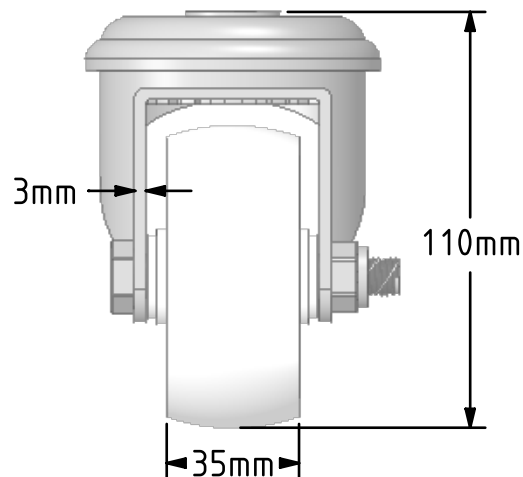
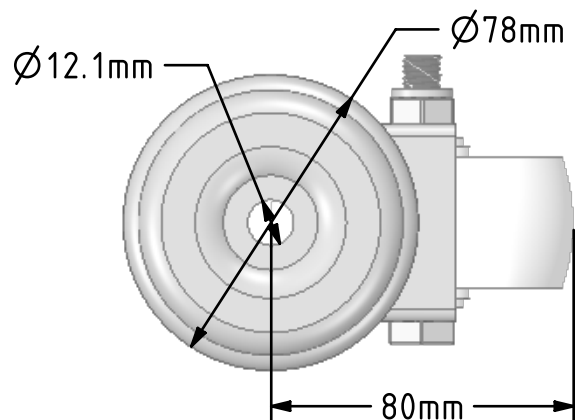



DRAWING DISCLAIMER
 COPYRIGHT OF THIS DRAWING IS RESERVED BY BIL GROUP LTD. IT IS ISSUED ON CONDITION THAT IT IS NOT REPRODUCED, COPIED, OR DISCLOSED TO A THIRD PARTY EITHER WHOLLY OR IN PART WITHOUT THE CONSENT IN WRITING OF BIL GROUP LTD.



Description:
 SSEH80NYBH12

Grade 304 Pressed stainless steel swivel castor with a 12mm bolt hole fitted with a white nylon wheel with a plain bearing. Wheel diameter 80mm, tread width 35mm, overall height 110mm, Load capacity 250kg.



	NAME	DATE	BIL Group Ltd, Porte Marsh Road, Calne Wiltshire, SN11 9BW, United Kingdom Tel +44 (0)1249 822 222 Fax: +44 (0)1249 822 300 www.bilgroup.co.uk	
DRAWN	Matt	13/11/18		
APPROVED BY	Tim W	13/11/18		
SCALE	1:2	13/11/18		
WEIGHT	0.663kg	13/11/18		
UNLESS OTHERWISE SPECIFIED DIMENSIONS ARE IN MILLIMETRES			TITLE	
Unspecified Tolerances Machining ± 0.25mm Fabrication ± 1mm			SSEH80NYBH12	
SIZE	DWG NO.		REV	
A4	BILCW03SSEH80NYBH12_01		1	
FILE NAME			SHEET 1 OF 1	
BILCW03SSEH80NYBH12_01.PDF				