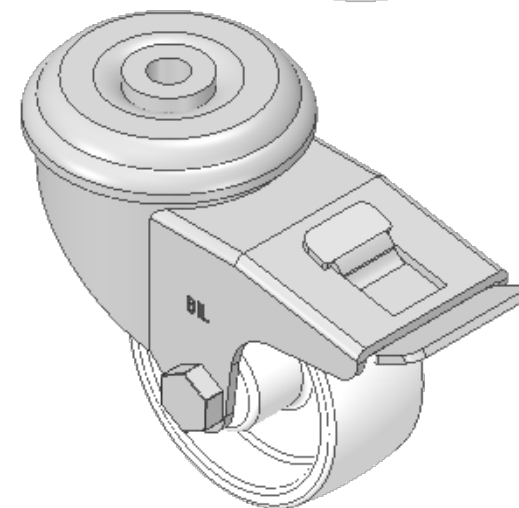
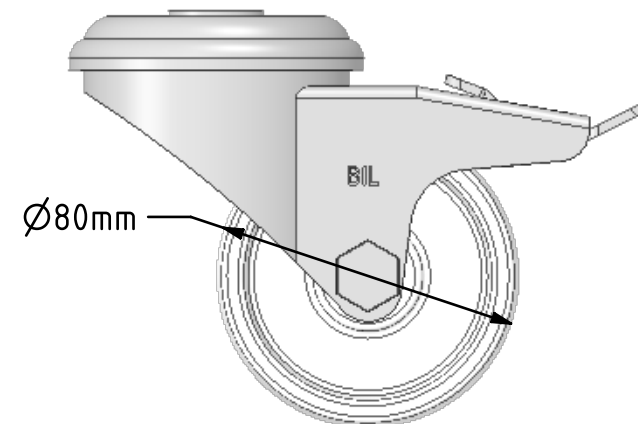
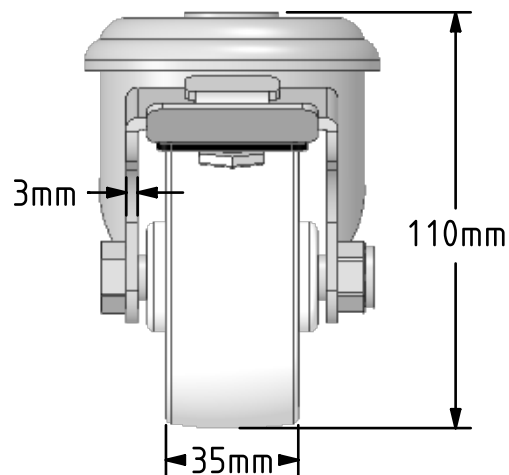
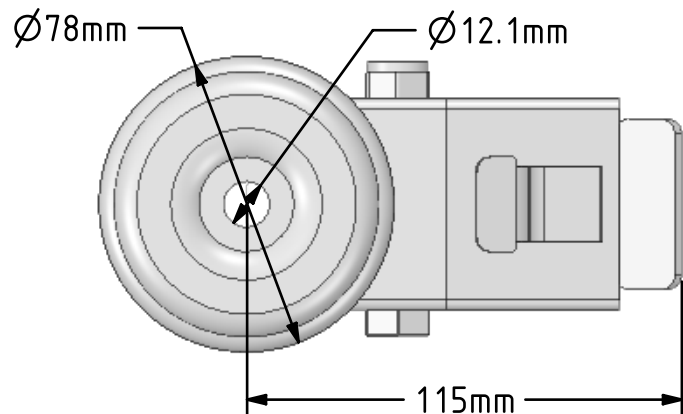


DRAWING DISCLAIMER  
 COPYRIGHT OF THIS DRAWING IS RESERVED BY BIL GROUP LTD. IT IS ISSUED ON CONDITION THAT IT IS NOT REPRODUCED, COPIED, OR DISCLOSED TO A THIRD PARTY EITHER WHOLLY OR IN PART WITHOUT THE CONSENT IN WRITING OF BIL GROUP LTD.



Description:  
 SSEH80NYBBH12SWB

Grade 304 Pressed stainless steel swivel castor with a 12mm bolt hole fitted with a white nylon wheel with a roller bearing and a total lock brake. Wheel diameter 80mm, tread width 35mm, overall height 110mm, Load capacity 250kg.



	NAME	DATE
DRAWN	Matt	04/02/19
APPROVED BY	Chris	04/02/19
SCALE	1:2	04/02/19
WEIGHT	0.879kg	04/02/19



BIL Group Ltd, Porte Marsh Road, Calne  
 Wiltshire, SN11 9BW, United Kingdom  
 Tel +44 (0)1249 822 222 Fax: +44 (0)1249 822 300  
 www.bilgroup.co.uk

TITLE

SSEH80NYBBH12SWB

UNLESS OTHERWISE SPECIFIED DIMENSIONS ARE IN MILLIMETRES

Unspecified Tolerances  
 Machining ± 0.25mm  
 Fabrication ± 1mm

SIZE	DWG NO.	REV
A4	BILCW03SSEH80NYBBH12SWB_01	1

FILE NAME BILCW03SSEH80NYBBH12SWB\_01.PDF SHEET 1 OF 1