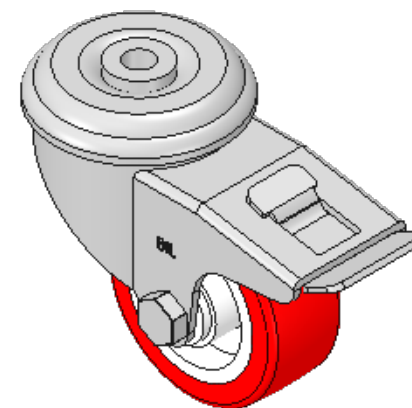
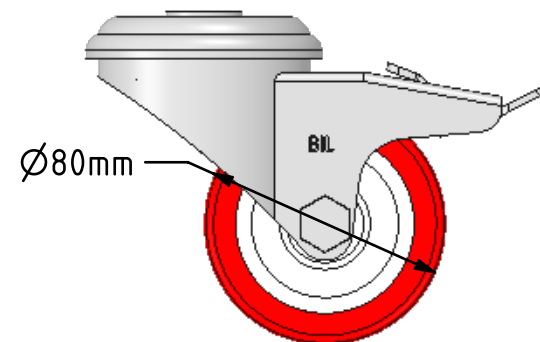
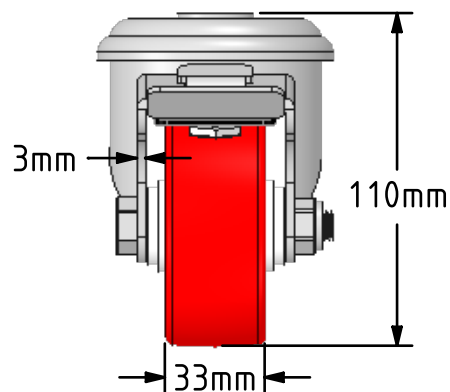
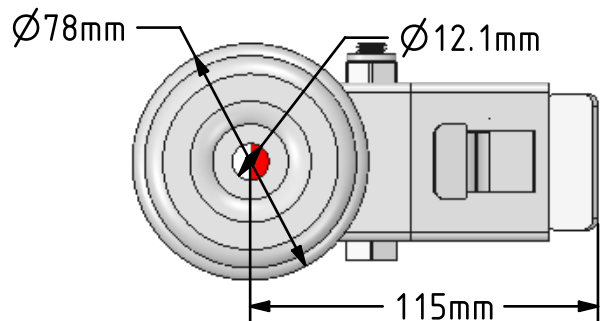



DRAWING DISCLAIMER
 COPYRIGHT OF THIS DRAWING IS RESERVED BY BIL GROUP LTD. IT IS ISSUED ON CONDITION THAT IT IS NOT REPRODUCED, COPIED, OR DISCLOSED TO A THIRD PARTY EITHER WHOLLY OR IN PART WITHOUT THE CONSENT IN WRITING OF BIL GROUP LTD.



Description:
 SSEH80NPBH12SWB

Grade 304 Pressed stainless steel swivel castor with a 12mm bolt hole fitted with a red polyurethane tyred white nylon centred wheel with a plain bearing and a total lock brake. Wheel diameter 80mm, tread width 33mm, overall height 110mm, Load capacity 210kg



	NAME	DATE	 BIL Group Ltd, Porte Marsh Road, Calne Wiltshire, SN11 9BW, United Kingdom Tel +44 (0)1249 822 222 Fax: +44 (0)1249 822 300 www.bilgroup.co.uk
DRAWN	Matt	16/03/18	
APPROVED BY	Chris	16/03/18	
SCALE	2:5	16/03/18	
WEIGHT	0.915kg	16/03/18	
UNLESS OTHERWISE SPECIFIED DIMENSIONS ARE IN MILLIMETRES Unspecified Tolerances Machining ± 0.25mm Fabrication ± 1mm			TITLE SSEH80NPBH12SWB
SIZE	DWG NO.	REV	
A4	BILCW03SSEH80NPBH12SWB_01	1	
FILE NAME			BILCW03SSEH80NPBH12SWB_01.PDF SHEET 1 OF 1