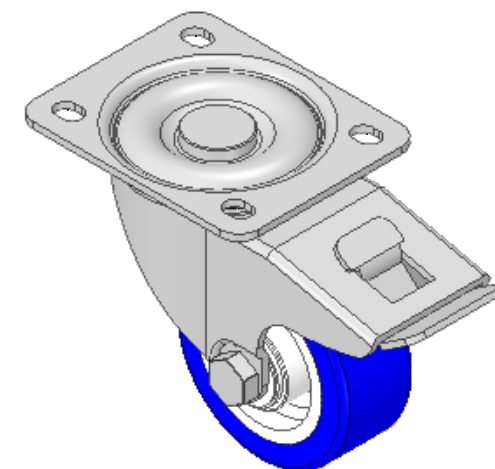
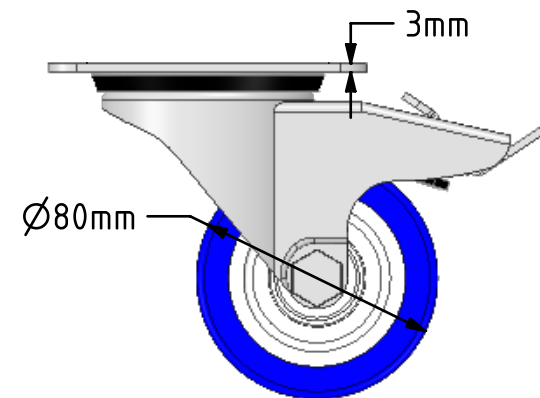
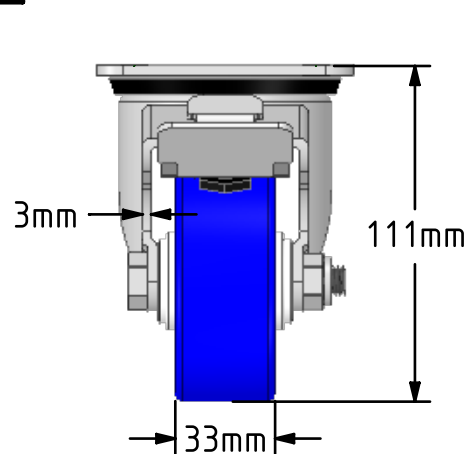
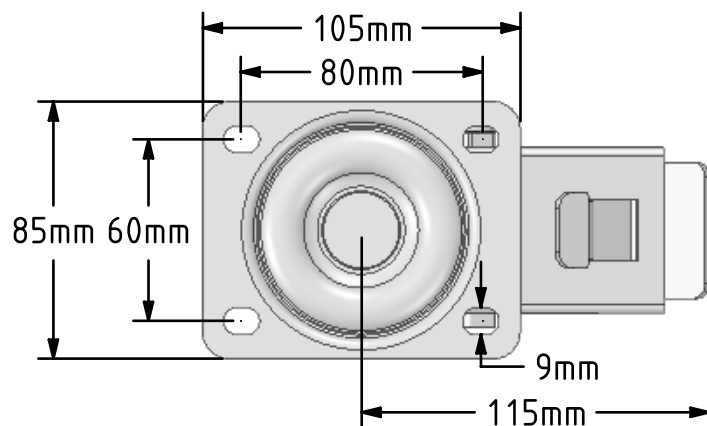


DRAWING DISCLAIMER
 COPYRIGHT OF THIS DRAWING IS RESERVED BY BIL GROUP LTD. IT IS ISSUED ON CONDITION THAT IT IS NOT REPRODUCED, COPIED, OR DISCLOSED TO A THIRD PARTY EITHER WHOLLY OR IN PART WITHOUT THE CONSENT IN WRITING OF BIL GROUP LTD.



Description:
 SSEH80ENPBSWB

Grade 304 Pressed stainless steel swivel castor with a top plate fixing fitted with a 82 Shore A blue polyurethane tyre white nylon centred wheel with a roller bearing and a total lock brake. Wheel diameter 80mm, tread width 33mm, overall height 111mm, top plate 105mm x 85mm, hole centres 80mm x 60mm. Load capacity 210kg



	NAME	DATE
DRAWN	Matt	05/06/19
APPROVED BY	Tim W	05/06/19
SCALE	2:5	05/06/19
WEIGHT	0.975kg	05/06/19

BIL BIL Group Ltd, Porte Marsh Road, Calne
 Wiltshire, SN11 9BW, United Kingdom
 Tel +44 (0)1249 822 222 Fax: +44 (0)1249 822 300
 www.bilgroup.co.uk

TITLE	SSEH80ENPBSWB	
-------	---------------	--

UNLESS OTHERWISE SPECIFIED DIMENSIONS ARE IN MILLIMETRES		SIZE	DWG NO.	REV
Unspecified Tolerances Machining ± 0.25mm Fabrication ± 1mm		A4	BILCW03SSEH80ENPBSWB_01	1
FILE NAME		BILCW03SSEH80ENPBSWB_01.PDF SHEET 1 OF 1		