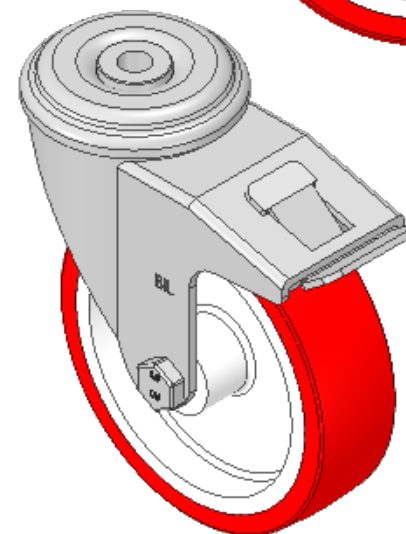
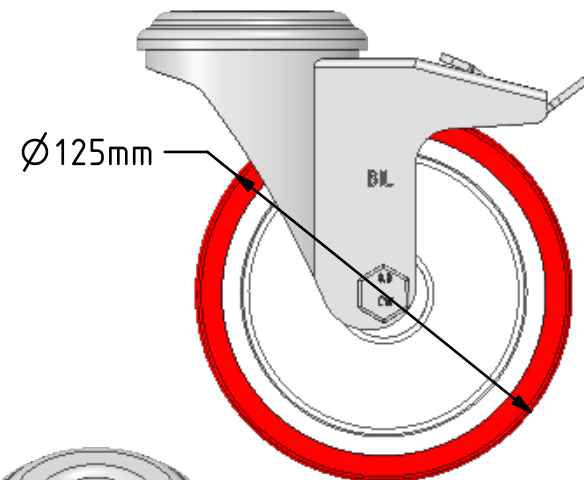
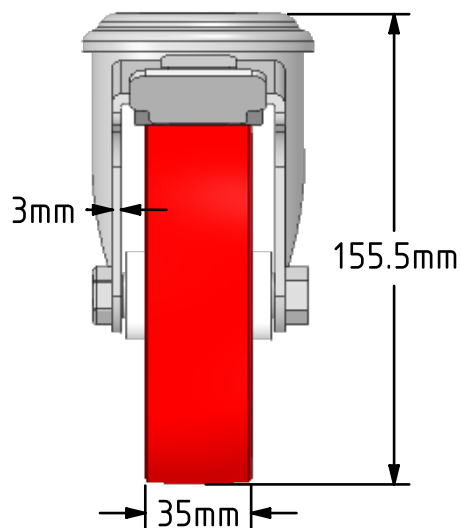
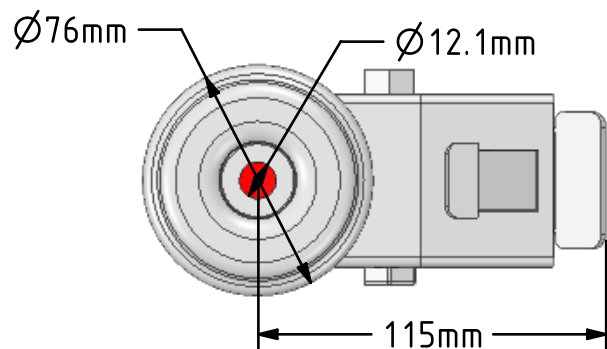


DRAWING DISCLAIMER
 COPYRIGHT OF THIS DRAWING IS RESERVED BY BIL GROUP LTD. IT IS ISSUED ON CONDITION THAT IT IS NOT REPRODUCED, COPIED, OR DISCLOSED TO A THIRD PARTY EITHER WHOLLY OR IN PART WITHOUT THE CONSENT IN WRITING OF BIL GROUP LTD.



Description:
 SSEH125NPBH12SWB

Grade 304 Pressed stainless steel swivel castor with a 12mm bolt hole fitted with a red polyurethane tyre white nylon centred wheel with a plain bearing and a total lock brake. Wheel diameter 125mm, tread width 35mm, overall height 155mm, Load capacity 250kg



	NAME	DATE
DRAWN	Matt	16/05/19
APPROVED BY	Tim W	16/05/19
SCALE	2:5	16/05/19
WEIGHT	1.106kg	16/05/19

UNLESS OTHERWISE SPECIFIED DIMENSIONS ARE IN MILLIMETRES

Unspecified Tolerances
 Machining ± 0.25mm
 Fabrication ± 1mm



BIL Group Ltd, Porte Marsh Road, Calne
 Wiltshire, SN11 9BW, United Kingdom
 Tel +44 (0)1249 822 222 Fax: +44 (0)1249 822 300
 www.bilgroup.co.uk

TITLE

SSEH125NPBH12SWB

SIZE	DWG NO.	REV
A4	BILCW03SSEH125NPBH12SWB_01	1

FILE NAME BILCW03SSEH125NPBH12SWB_01.PDF SHEET 1 OF 1